



# Nº.8

## HARBORD SQUARE



CANARY WHARF  
RESIDENTIAL





82 LOFT-STYLE  
APARTMENTS  
DESIGNED FOR  
FLEXIBLE  
UNCONSTRAINED  
LIVING

External photography of 8 Harbord Square



# A HOME FOR THE CREATIVE AND THE CURIOUS



Show apartment photography



A SPACE

DESIGNED TO

BE MADE

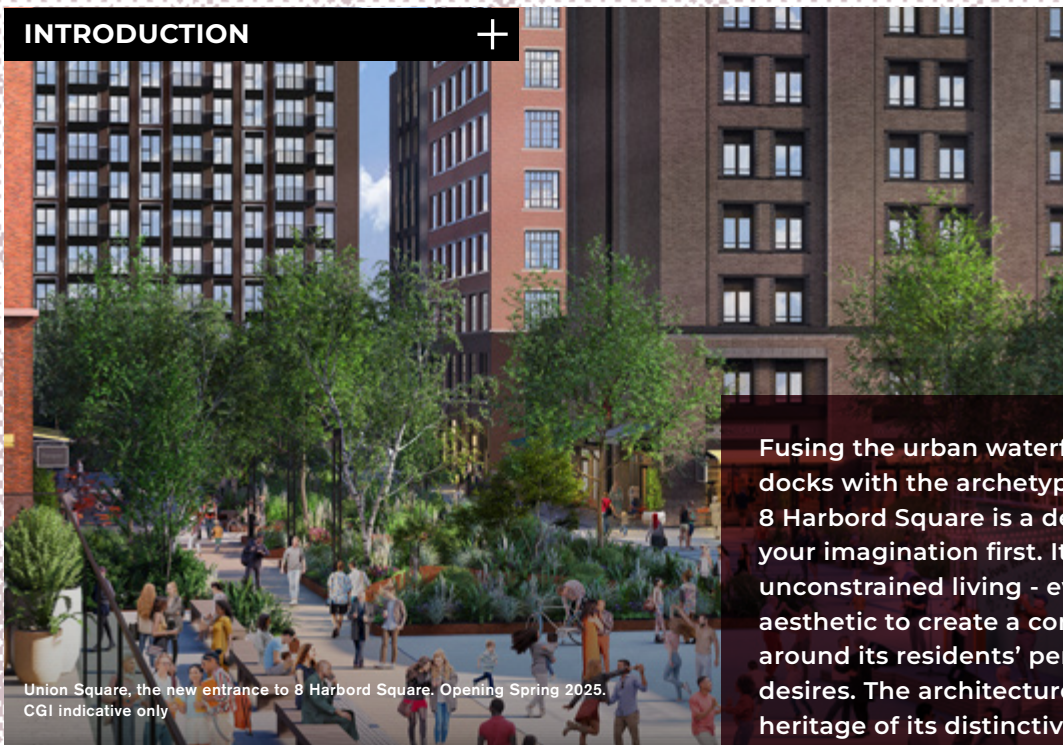
YOUR OWN



Show apartment photography

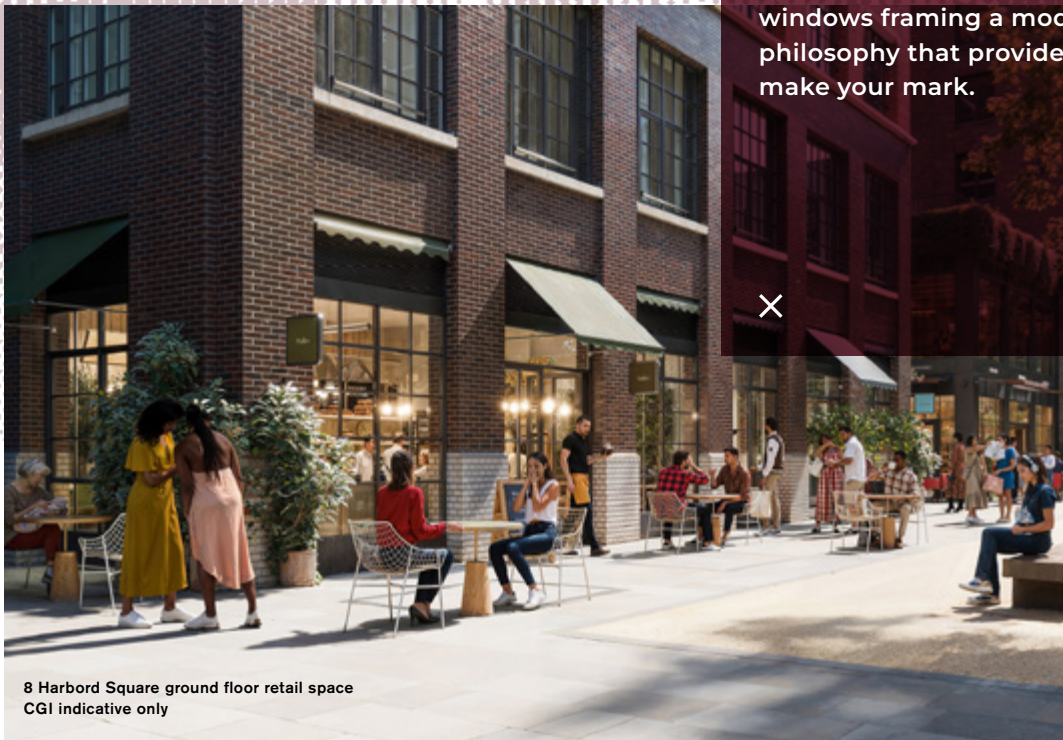


## INTRODUCTION

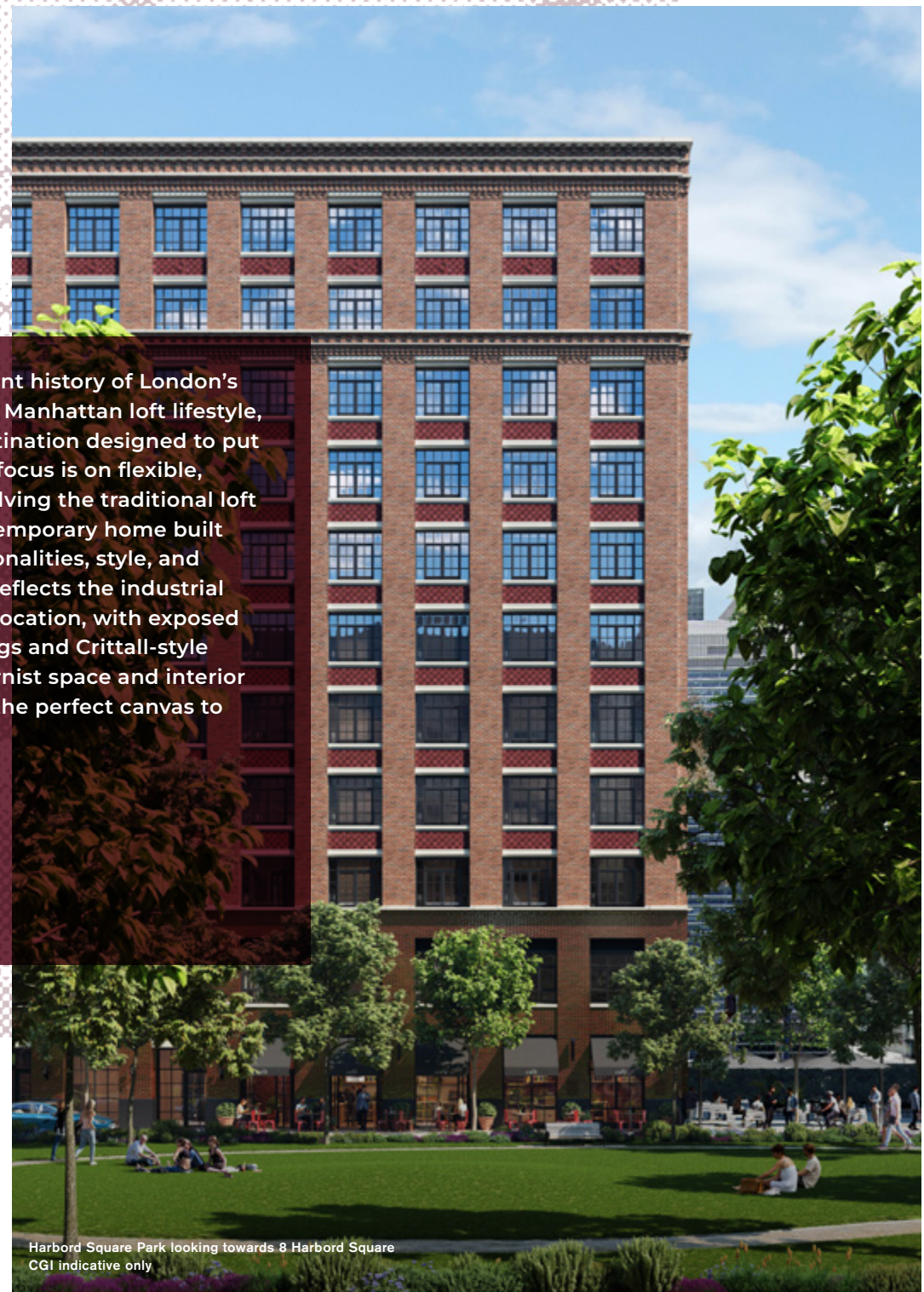


Union Square, the new entrance to 8 Harbord Square. Opening Spring 2025.  
CGI indicative only

Fusing the urban waterfront history of London's docks with the archetypal Manhattan loft lifestyle, 8 Harbord Square is a destination designed to put your imagination first. Its focus is on flexible, unconstrained living - evolving the traditional loft aesthetic to create a contemporary home built around its residents' personalities, style, and desires. The architecture reflects the industrial heritage of its distinctive location, with exposed brickwork, concrete ceilings and Crittall-style windows framing a modernist space and interior philosophy that provides the perfect canvas to make your mark.




8 Harbord Square ground floor retail space  
CGI indicative only



Harbord Square Park looking towards 8 Harbord Square  
CGI indicative only





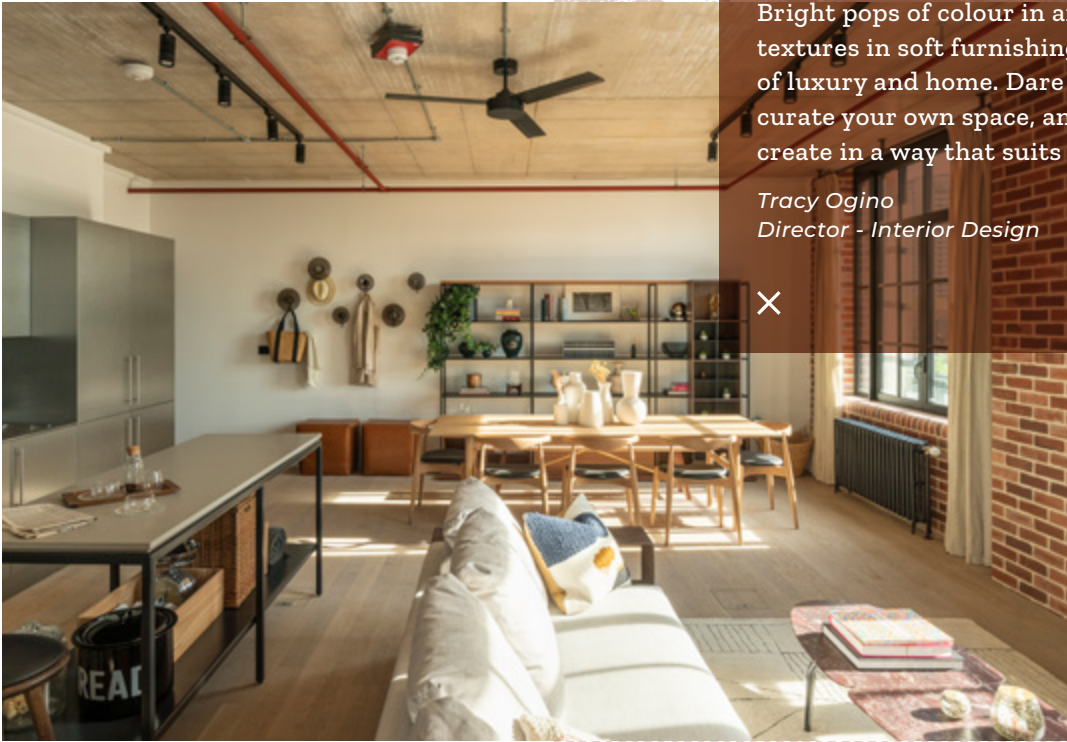
8 Harbord Square is an address for the creatively adventurous. Its loft-style living offers three open plan apartment types; Prospect, Gramercy and the Upper Lofts. By departing from the conventional apartment design through the removal of internal walls and with only essential elements in fixed locations, 8 Harbord Square allows your lifestyle to dictate the space. Always playing host? These apartments offer the ultimate entertaining space. Working from home? Nothing is fixed, so mix up the space to create your perfect office. Pursuing an idea or chasing a dream? Don't be constrained by physical or metaphorical walls. Life at 8 Harbord Square allows for a truly authentic, open plan loft living experience, with endless opportunities to unleash your creativity and personalise the space to make it your own.

X



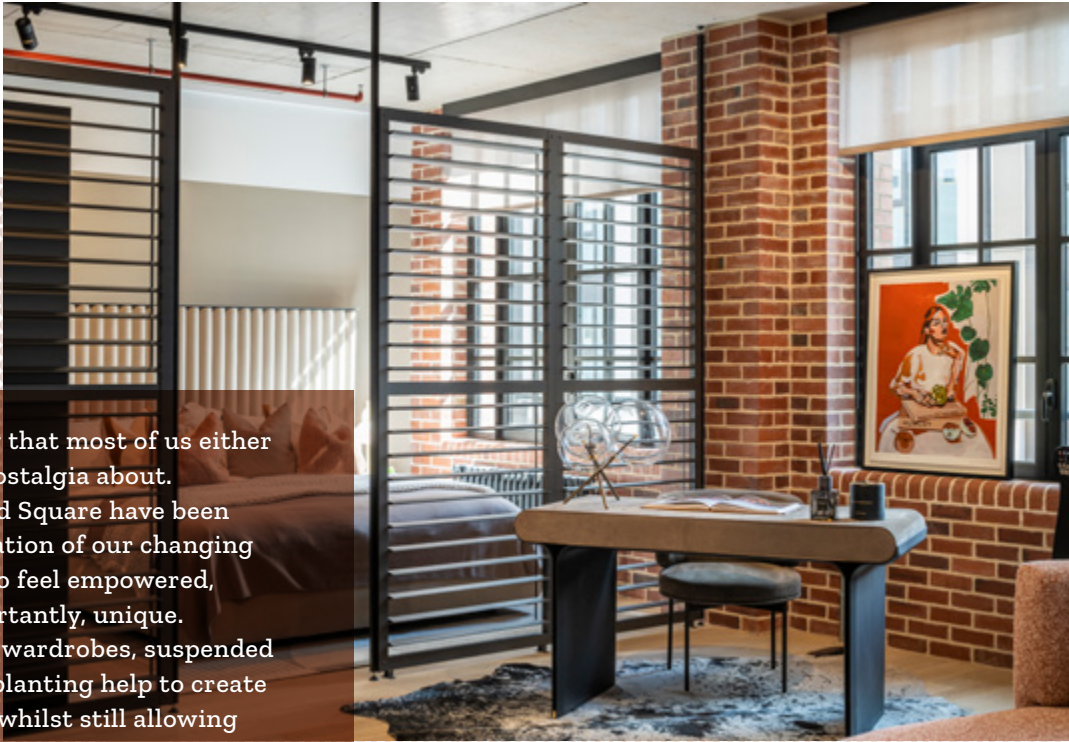
APARTMENTS

YOUR CREATIVE CANVAS +



True loft living is something that most of us either aspire to or feel a touch of nostalgia about. The apartments at 8 Harbord Square have been designed as a perfect celebration of our changing times, embracing our need to feel empowered, emboldened, and most importantly, unique. Clever use of shelving units, wardrobes, suspended art, freestanding panels, or planting help to create soft barriers between zones whilst still allowing natural light to flow through the open plan space. Bright pops of colour in artwork and sumptuous textures in soft furnishings help to layer the feeling of luxury and home. Dare to narrate your own story, curate your own space, and live, work, eat, sleep and create in a way that suits you best.

Tracy Ogino  
Director - Interior Design



Show apartment photography



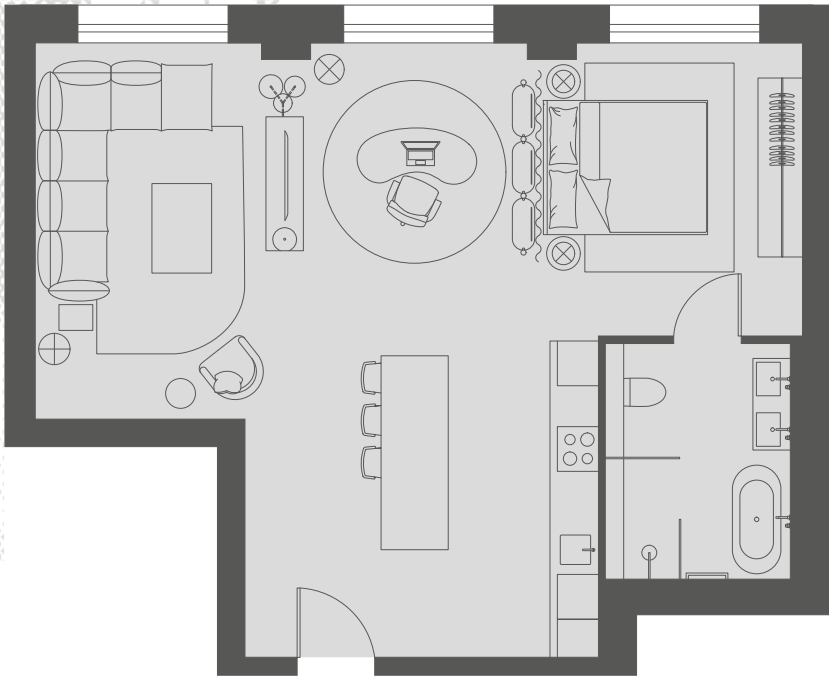
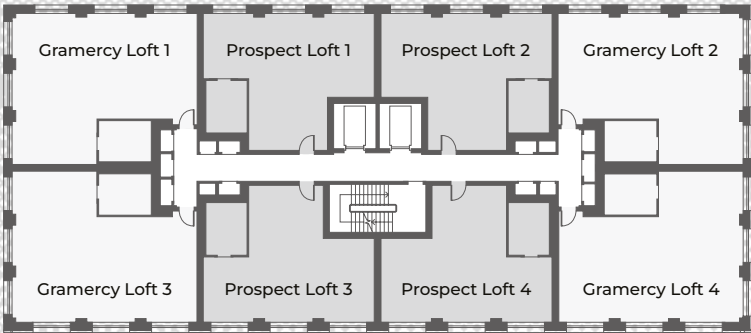


APARTMENT TYPES

PROSPECT LOFT



809 sq ft



Show apartment photography

APT 205



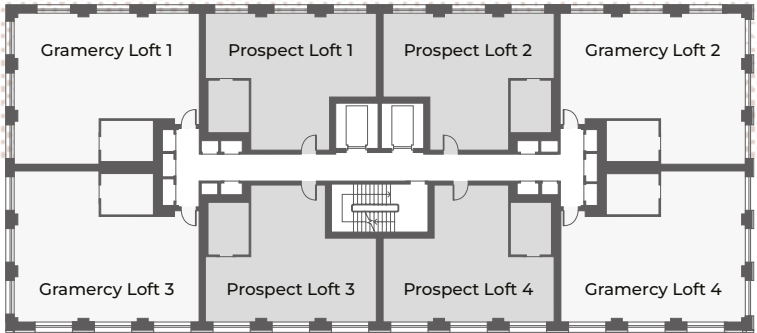
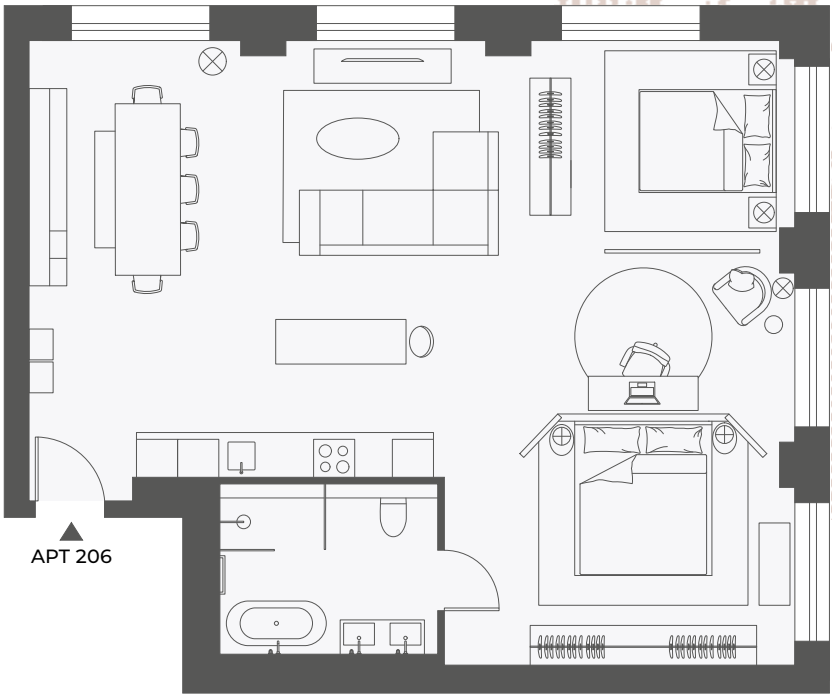
APARTMENT TYPES

GRAMERCY LOFT



1,037 sq ft

Show apartment photography





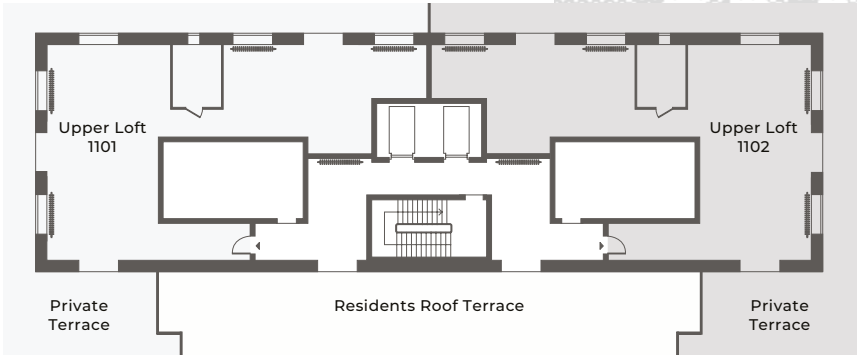
APARTMENT TYPES

UPPER LOFTS +

1,431 sq ft



Show apartment photography





## SPECIFICATION

Show apartment photography

## WHAT'S INSIDE

For the Upper Loft Specification  
please speak to your Sales Consultant

### Key Design Features

- Loft living in a warehouse style building with exposed concrete ceilings and brick walls
- Open plan concept with no internal partitions except to bathroom
- Flexibility and freedom for you to design your space through the use of furniture, artwork and collectibles
- Work-Live-Play as you make use of the whole apartment

### Lighting

- Ceiling mounted track with black directional spotlights
- Downlighters to bathrooms
- Under cabinet lighting to the kitchen

### AV Telephone and Data System

- Data outlets provided for dedicated internet connection or telephone
- Television (terrestrial and satellite) points

### Electrical Services

- Floor boxes with power to primary space
- Brushed stainless steel lighting to switch plates
- Brushed stainless steel sockets with USB ports to kitchen
- Surface mounted metal sockets to brickwork

### Building Services

- Metered heating and hot water supply
- Black cast iron radiators to primary space
- Wall mounted heated towel radiator to bathroom
- Black ceiling fans

### Entrance Door

- Metal entrance door

### Windows

- Large black powder coated Crittall style windows with internal window ledge

### Flooring

- Engineered timber flooring throughout primary space
- Grey mosaic tile to bathroom

### Walls and Ceiling

- Exposed concrete ceiling to primary space (bathroom ceiling is white painted plasterboard)
- Exposed brickwork to window elevations
- All other internal walls white painted plasterboard





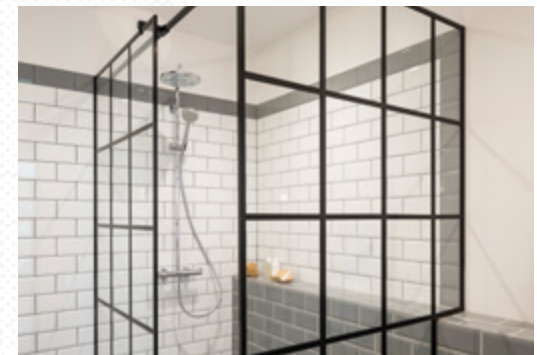
## KITCHEN

- Modern design with stainless steel counter tops and matching cabinetry
- Undermount sink, polished chrome mixer tap, and metal effect splashback
- Siemens appliances including fridge/freezer, induction hob, single oven, dishwasher and combined washer/dryer



## BATHROOM

- Contemporary bathroom with metro brick wall tiles
- Black Crittall-style walk in shower enclosure
- Freestanding bath
- Double wash hand basin
- Mirrored storage cupboard above basin
- Shaver outlet and feature wall lights
- Wall-mounted WC



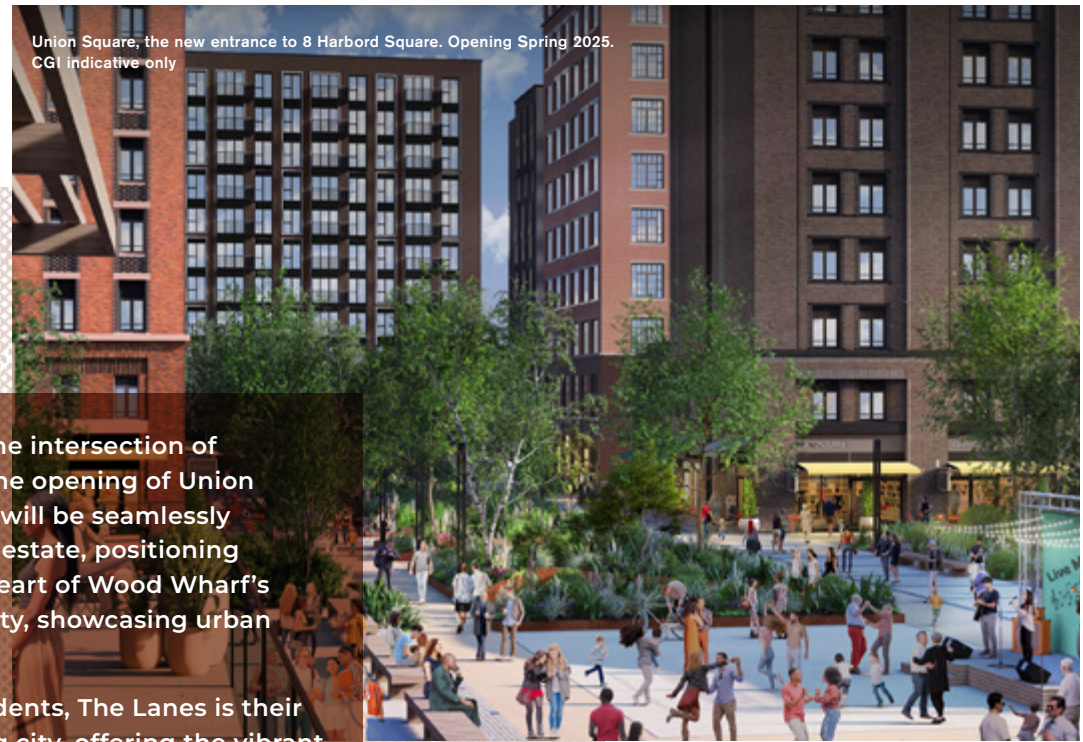


## WOOD WHARF

AN IMMERSIVE LIFESTYLE



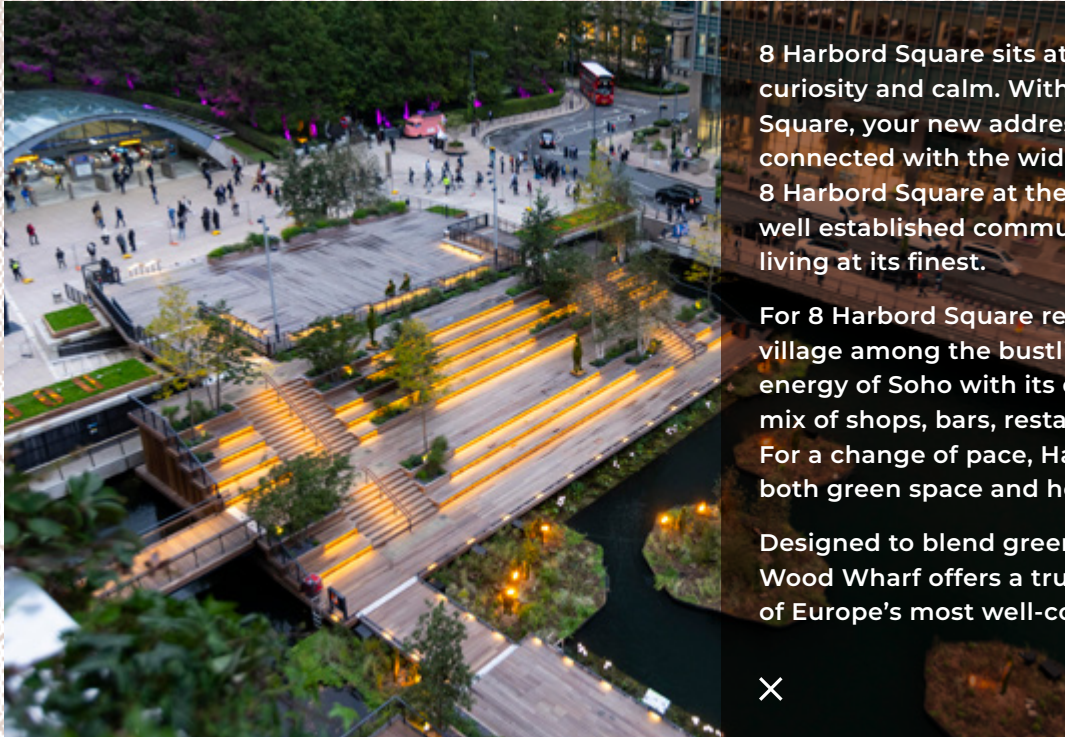
Union Square, the new entrance to 8 Harbord Square. Opening Spring 2025.  
CGI indicative only



8 Harbord Square sits at the intersection of curiosity and calm. With the opening of Union Square, your new address will be seamlessly connected with the wider estate, positioning 8 Harbord Square at the heart of Wood Wharf's well established community, showcasing urban living at its finest.

For 8 Harbord Square residents, The Lanes is their village among the bustling city, offering the vibrant energy of Soho with its eclectic and independent mix of shops, bars, restaurants and cafés. For a change of pace, Harbord Square park offers both green space and headspace.

Designed to blend greenery with waterside living, Wood Wharf offers a true oasis of calm in one of Europe's most well-connected areas.

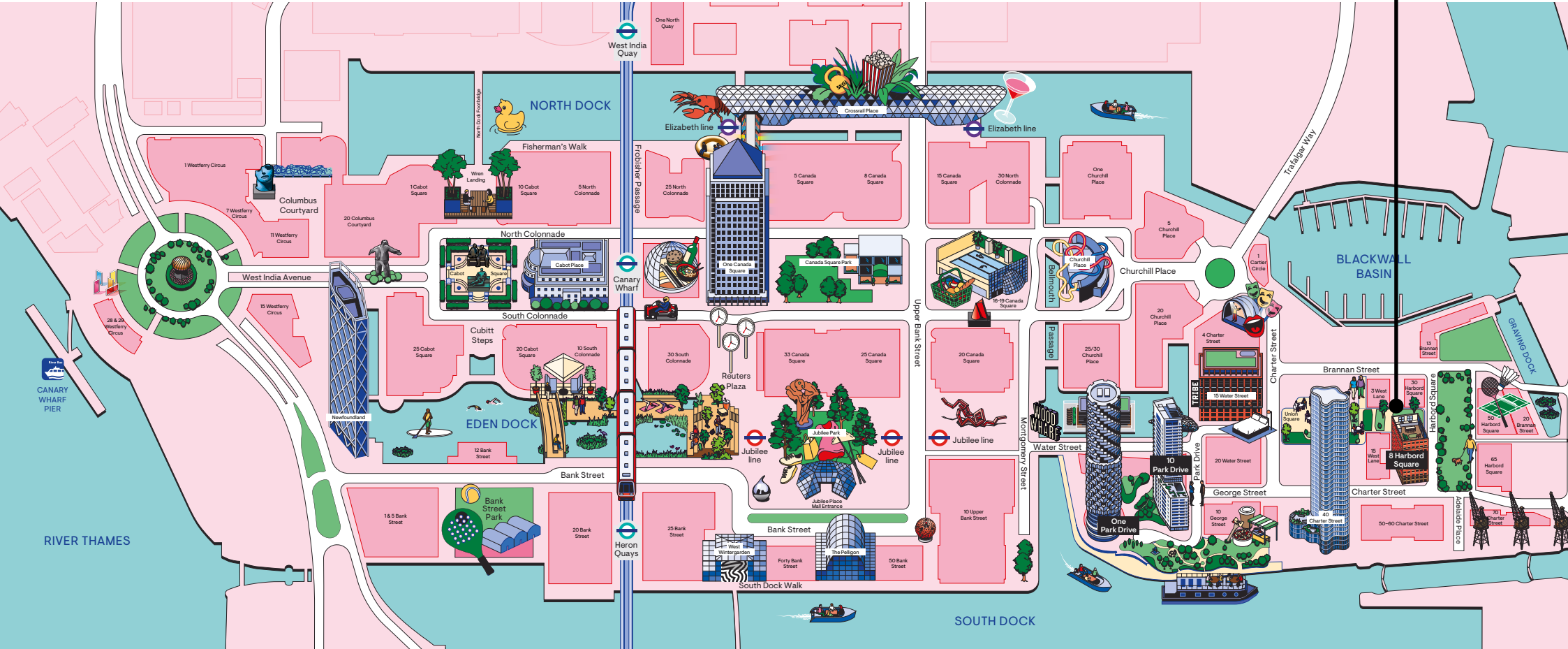


For 8 Harbord Square residents, The Lanes is their village within a bustling city, a place where community thrives, enriched by an independent mix of shops, bars, restaurants and cafes.

Designed to blend...









## TRANSPORT

## WELL-CONNECTED

With unparalleled transport connections, including the Elizabeth line, Jubilee line, Uber Boat services, and Docklands Light Railway, Canary Wharf has never been better connected.

Source: TfL - all times are approximate



### Jubilee Line

London Bridge → 6 Minutes  
Waterloo → 9 Minutes  
Westminster → 11 Minutes  
Green Park → 13 Minutes



### Uber Boat

London Bridge City → 15 Minutes  
Blackfriars → 23 Minutes  
Embankment → 29 Minutes  
London Eye → 31 Minutes



### DLR

Greenwich → 9 Minutes  
Tower Gateway → 10 Minutes  
Bank → 11 Minutes  
London City Airport → 14 Minutes

### Elizabeth Line

Liverpool Street → 7 Minutes  
Farringdon → 9 Minutes  
Bond Street → 14 Minutes  
Heathrow (T1,2,3) → 45 Minutes

### London City Airport

Amsterdam → 1hr 3m  
Luxembourg → 1hr 10m  
Edinburgh → 1hr 15m  
Zurich → 1hr 35m  
New York → 9hr 15m



Nº.8

HARBOR  
SQUARE

WE LOOK FORWARD  
TO WELCOMING YOU

+44 (0)20 7001 3800  
[residential.sales@canarywharf.com](mailto:residential.sales@canarywharf.com)



CANARY WHARF  
RESIDENTIAL