

Welcome

Explore our vibrant neighbourhood on foot; you'll find everything you might want within a 15-minute walk

Welcome to the walkable community of Canary Wharf, where you'll find all daily essentials and so much more in one place. Read on to find out about all the exciting events coming up here this season as part of our cultural programme. Our residents, local workers and visitors can make the most of many benefits we offer, such as easy access to water and green spaces, great restaurants, spacious shopping malls, lively waterside bars and a wide range of fun social activities like padel. We hope you enjoy exploring our ever-greener neighbourhood.

For full details of what's on and our full brand directory, visit canarywharf.com @canarywharflondon



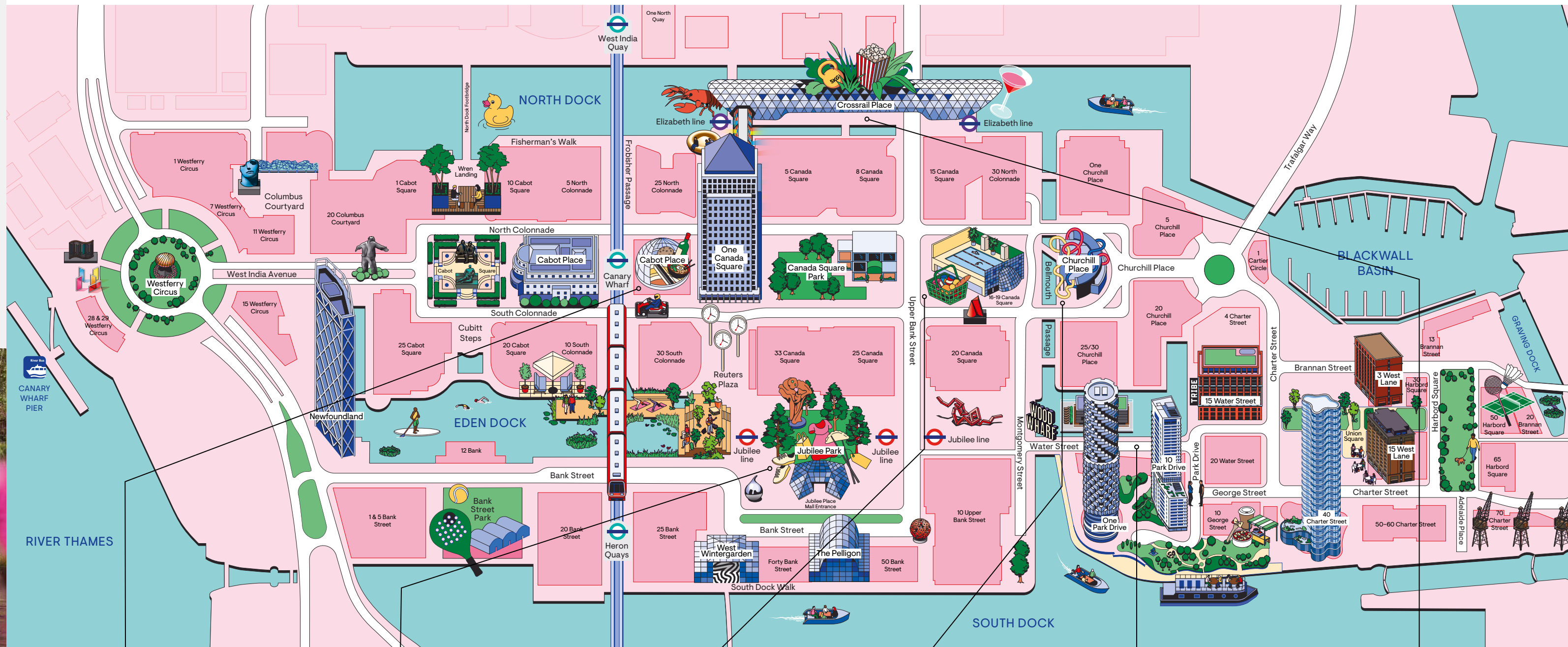
Making nature part of Wharf life

We've partnered with the Eden Project to enhance biodiversity because when nature thrives, so do we: places like Eden Dock, Wood Wharf and Crossrail Place Roof Garden boost our mood, creativity, productivity and physical health. Our parks, gardens and waterside spaces are designed to encourage human interaction and connect our community with nature, while enhancing wellbeing at the same time – enjoy seasonal activities like minigolf, paddleboarding, open water swimming and GoBoat here.

Our unique districts are all interconnected. The five malls, along with street-level shopping and dining, form a walkable '15-minute city'.

Explore Canary Wharf

At street level, you'll find vibrant restaurants and lively al fresco terraces that make the most of their proximity to the water.



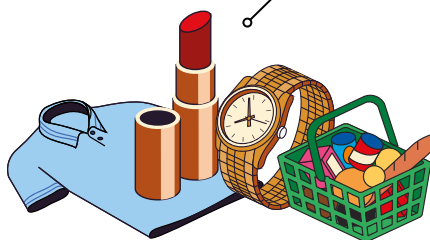
CABOT PLACE

A vibrant community space that's home to family-friendly experiences, amenities, retail boutiques – offering gifting, lifestyle and children's fashion – and world food at Atrium Kitchen.



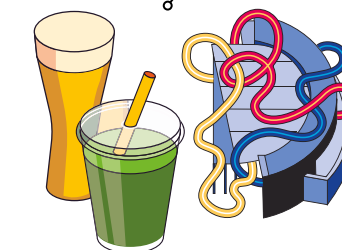
JUBILEE PLACE

A curated retail sanctuary with expansive stores and mood-boosting natural light, stocking premium womenswear, homeware, accessible fashion and a host of beauty brands, plus a great range of food and everyday services.



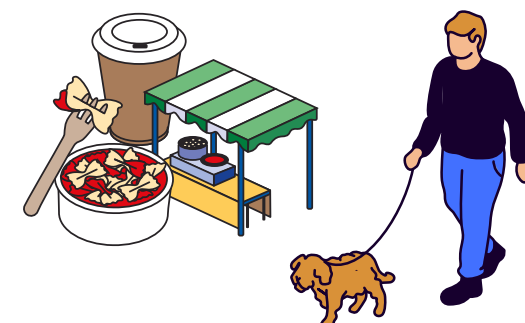
CANADA PLACE

In Canada Place, our largest mall, you will find a dynamic mix of well-known names, from Waitrose & Partners to Third Space – each is housed within a boutique store, thoughtfully tailored to their location. These brands focus on effortless chic, everyday convenience and premium athleisure.



CHURCHILL PLACE

A seamless blend of convenience, wellness and entertainment, day and night, thanks to its range of shops and services, Churchill Place is found right next to our Wood Wharf district.



WOOD WHARF

Our newest neighbourhood is home to several striking residential buildings, TRIBE hotel, high-spec gyms and amenities both practical and delightful, as well as a roster of must-visit restaurants and social drinking spots.

CROSSRAIL PLACE

Discover modern restaurants, fun leisure experiences and wellness spaces in our newest mall. It's the closest to the Elizabeth line and home to the outdoor haven that is the Roof Garden; here, you can connect, re-energise and unwind.



EXPLORE

Canary Wharf



Taste the World

Enjoy delicious food and drink from all over the globe; we have more than 80 restaurants, cafés and bars, perfect for morning coffees, meals out with friends and everything in between.



1. Best for Breakfast & Brunch

640EAST Wood Wharf
CARAVAN Reuters Plaza
FEELS LIKE JUNE Wood Wharf
OLE & STEEN Crossrail Place / Jubilee Place
THE IVY IN THE PARK Canada Square Park



2. Thinking Green

EMILIA'S CRAFTED PASTA Wood Wharf
HAWKSMOOR Wood Wharf
HUMBLE GRAPE Mackenzie Walk
MALLOW Wood Wharf
MMY WOOD WHARF Wood Wharf



3. Great for Groups

BREWDOG Churchill Place
FRANCO MANCA Crossrail Place
MARKET HALLS North Colonnade
OASIS BAR & TERRACE Canada Square Park
THE PARLOUR The Park Pavilion



4. Grab & Go Delights

CHIPOTLE Jubilee Place
MARUGAME UDON Cabot Place
PATTY&BUN Wood Wharf
WAHACA The Park Pavilion
WHARF KITCHEN Jubilee Place



5. By the Water

BIG EASY Crossrail Place
DISHOOM Wood Wharf
GAUCHO Westferry Circus
NO.35 MACKENZIE WALK Mackenzie Walk
ROE Wood Wharf



6. Hot New Openings

DIN TAI FUNG Opens Jan 2025, Crossrail Place
HOVARDA Wood Wharf
KRICKET Frobisher Passage
MARCELINE Wood Wharf
SOMA Frobisher Passage



7. Foodie Faves

BLACKLOCK Frobisher Passage
IPPUDO Crossrail Place
ROKA The Park Pavilion
SIX BY NICO Chancellor Passage
STICKS'N'SUSHI Crossrail Place



8. Music, DJs & Dancing

BRERA LOUNGE Cabot Square
BOISDALE CANARY WHARF Cabot Place
PERGOLA ON THE WHARF Crossrail Place
THE ALCHEMIST Reuters Plaza
THE COCKTAIL CLUB Cabot Square

See & Do

1. The Great Outdoors

Boost your mood with open water swimming, kayaking on our tranquil waterways or a GoBoat river adventure before exploring 16.5 acres of parks and gardens, designed for people and nature.



2. Culture & Events

Enjoy the UK's biggest collection of public outdoor art, explore the London Museum Docklands and make the most of seasonal events like ice skating. All the info is on the Canary Wharf app.

3. Retail Therapy

Canary Wharf has 120+ stores across five spacious malls, each with its own distinct character, so there's something for everyone. The malls are interconnected too, meaning you'll stay warm and dry!



4. Time to Socialise

Time for friendly competition (complete with food and drinks) at Pitch, Capital Karts, Electric Shuffle, Clays, Fairgame or The Cube. For top-notch R&R, it has to be the luxe Everyman Cinema.



5. Health & Fitness

Improve your fitness with a class, workout or game at Padium (home of padel), Barry's, In2Sports, Third Space and Ultimate Performance. Visit Pure Sports Medicine for specialist advice and treatments.



6. Family Fun

Inspire children of all ages by following the Children's Art Trail, visiting The Idea Store or heading to Flip Out, then eat at family hot spots Franco Manca, Zizzi, Shake Shack, Wagamama or Wahaca.



7. Wellbeing Wonders

Take care of yourself and let the expert teams at Third Space spa, Get A Drip and Le Chalet Cryo work their magic. Otherwise book a sauna session at Arc, opening Jan 2025.



8. Daily Essentials

Find all the key amenities and services you might need here, from dry cleaners, post offices, pharmacies and supermarkets to doctor's surgeries, opticians, dentists, and health clinics.



3. Great for Groups

BREWDOG Churchill Place
FRANCO MANCA Crossrail Place
MARKET HALLS North Colonnade
OASIS BAR & TERRACE Canada Square Park
THE PARLOUR The Park Pavilion



4. Grab & Go Delights

CHIPOTLE Jubilee Place
MARUGAME UDON Cabot Place
PATTY&BUN Wood Wharf
WAHACA The Park Pavilion
WHARF KITCHEN Jubilee Place



7. Foodie Faves

BLACKLOCK Frobisher Passage
IPPUDO Crossrail Place
ROKA The Park Pavilion
SIX BY NICO Chancellor Passage
STICKS'N'SUSHI Crossrail Place



8. Music, DJs & Dancing

BRERA LOUNGE Cabot Square
BOISDALE CANARY WHARF Cabot Place
PERGOLA ON THE WHARF Crossrail Place
THE ALCHEMIST Reuters Plaza
THE COCKTAIL CLUB Cabot Square



- Receive all the latest offers & promotions
- Find your way around with our Canary Wharf Map
- Access everything you need to know about Canary Wharf
- Enter a prize draw to win a £500 Retailer Gift Card*

*Terms & Conditions apply

Download on the App Store
GET IT ON Google Play

YOUR HOME
THE UPPER LOFTS
Rooftop living in Canary Wharf

Nº.8
HARBOR SQUARE

residential.canarywharf.com



4. Grab & Go Delights

CHIPOTLE Jubilee Place
MARUGAME UDON Cabot Place
PATTY&BUN Wood Wharf
WAHACA The Park Pavilion
WHARF KITCHEN Jubilee Place



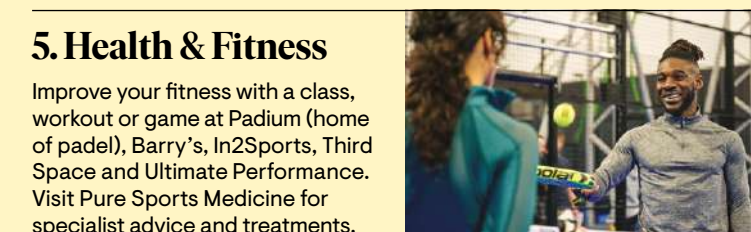
7. Foodie Faves

BLACKLOCK Frobisher Passage
IPPUDO Crossrail Place
ROKA The Park Pavilion
SIX BY NICO Chancellor Passage
STICKS'N'SUSHI Crossrail Place



8. Music, DJs & Dancing

BRERA LOUNGE Cabot Square
BOISDALE CANARY WHARF Cabot Place
PERGOLA ON THE WHARF Crossrail Place
THE ALCHEMIST Reuters Plaza
THE COCKTAIL CLUB Cabot Square



8. Daily Essentials

Find all the key amenities and services you might need here, from dry cleaners, post offices, pharmacies and supermarkets to doctor's surgeries, opticians, dentists, and health clinics.