

**CANARY WHARF**



# **FESTIVE PARTY SEASON**

The best spaces to celebrate



# AN UNFORGETTABLE FESTIVE SEASON

Discover the best places for mixing, mingling and celebrating in the Wharf this season.

Elevate your Christmas and year-end celebrations at Canary Wharf. Enjoy electric go-karting, clay pigeon-shooting, fairground games, and shuffleboard. Or indulge in delicious cuisine at your choice of waterside restaurants or vibrant bars.

With more than 40 bars, restaurants and experiences to discover, find the Canary Wharf map at the end of this pack.

ROKA

THE IVY

PERGOLA  
ON THE WHARF

TRIBE

BRASSERIE  
MARCELINE

STICKS | NISUSHI

CAPITAL  
KARTS

MM<sup>y</sup>  
MERCATO METROPOLITANO

DISHOOM

IBÉRICA  
CANARY WHARF



Patty&Bun



Blacklock

ROE  
WOOD WHARF

KRICKET

mallow

THE ALCHEMIST

CARAVAN

Emilia's  
CRAFTED PASTA

HAWKSMOOR



CHAI KI

Nº35  
Mackenzie  
Walk



HOVARDA

FEELS LIKE  
JUNE

THE BOATHOUSE

THE  
CUBE  
CANARY WHARF

ELECTRIC  
SHUFFLE



HUMBLE GRAPE

wahaca  
mexican  
market  
eating

the parlour  
bar • kitchen • cocktail lounge

BOISDALE

GAUCHO

SIX by NICO

# BOISDALE

A lively restaurant and music venue serving modern British food, comprising of the UK's largest whisky bar, a garden terrace, the Hine bar, a cigar lounge and library, overlooking Cabot Square with the City's skyline in the distance.

---

## PRIVATE DINING

### THE JACK VETTRIANO & THE JOHNNIE WALKER ROOMS

Perfect for intimate dinners, meetings, brainstorming & working lunches.

**Capacity**

12 seated

### THE PAUL GAUGUIN ROOM

This room has superb views of the City of London's skyline and offers complete privacy. There is a TV screen installed in this room available for use.

**Capacity**

24 seated | 40 standing

### THE GALLERY ROOM

Located in the main restaurant, this large room is fitted with a ceiling projector and a screen.

**Capacity**

40 seated | 60 standing

---

## EXCLUSIVE HIRE

**Capacity**

250 seated | 500 standing

**CLICK HERE FOR MORE INFO**

**EMAIL:** [reservations@boisdale-cw.co.uk](mailto:reservations@boisdale-cw.co.uk)

**Upper Level 1, Cabot Place, Canary Wharf,  
London E14 4QT**



# BRASSERIE MARCELINE

Marceline is a grand yet welcoming French Brasserie, nestled by the water in Canary Wharf. Inspired by the authentic institutions of Paris and playful iterations in New York serving a menu filled with traditional dishes and modern classics from morning until late, seven days a week.

Discover versatile event spaces such as the waterside Terrace, laid-back Salon and Main Dining Room. There are also two, fully-private private dining areas, perfect for intimate gatherings and special celebrations.

---

## PRIVATE DINING

### BALCONY

Capacity  
24 seated | 45 standing

### MEZZANINE

Capacity  
60 seated | 100 standing

---

## EXCLUSIVE HIRE

### FULL VENUE

Capacity  
400 standing

**CLICK HERE FOR MORE INFO**

**EMAIL:** [events@marceline.london](mailto:events@marceline.london)

**5 Water Street,  
Canary Wharf, E14 5GX**



# BRERA LOUNGE

Nestled amidst the bustling streets of Canary Wharf lies Brera Lounge, a captivating haven reminiscent of an enchanted forest. Here, guests are treated to the exquisite flavours of authentic Italian pizza, meticulously crafted cocktails, and the soothing embrace of shisha. As you step into this magical realm, prepare to be transported to a world where every moment is infused with warmth, sophistication, and an undeniable sense of wonder.

---

## EXCLUSIVE HIRE

**Capacity**  
200 seated



**CLICK HERE FOR MORE INFO**  
EMAIL: [tasso@italika.co.uk](mailto:tasso@italika.co.uk)

1 Cabot Square, Canary Wharf,  
London E14 4QT

# BROADWICK STUDIO

Broadwick Studio is a hybrid event space wholly committed to flexibility and creativity. Purpose-built for agile and diverse expression, Broadwick Studio is a flexible self-contained space for hire in Canary Wharf promising intimate immersive gatherings that boldly stand out. Allowing a capacity of up to 120 people, Broadwick Studio is a plug-and-play space purposefully built with creativity in mind suited for meetings, parties, brand experiences, receptions, dinners and more.'

---

## EXCLUSIVE HIRE

**Capacity**  
120 standing



**CLICK HERE FOR MORE INFO**  
**EMAIL:** [broadwickstudio@broadwick.com](mailto:broadwickstudio@broadwick.com)

**30 Water Street Canary Wharf**  
**London E14 5GX**

# CARAVAN

Located in the heart of Canary Wharf, sitting alongside Konstantin Grcic's iconic 'six public clocks' art work, Caravan Canary Wharf brings all day dining to this bustling business and residential district.

---

## SEMI-PRIVATE DINING

The Private Dining Room in Canary Wharf is a semi-private room perfect for business breakfasts, lunches, brunches, drinks parties and dinner feasting.

### THE MAPLE ROOM

**Capacity**  
25 seated | 30 standing

---

## EXCLUSIVE HIRE

**Capacity**  
100 seated | 150 standing



**CLICK HERE FOR MORE INFO**  
**EMAIL:** [events@caravanrestaurants.co.uk](mailto:events@caravanrestaurants.co.uk)

**Reuters Plaza, Canary Wharf,  
London E14 5AJ**

# CHAI KI

Chai Ki provides a contemporary drinking and dining experience, with an acclaimed menu of modern Indian soul food. The drinks range features craft and in-house-infused beers, a carefully selected Wine list and seasonal signature cocktails.

Set 'feasting' menus are popular with groups, but bespoke menus can be created to meet guest requirements. Canapes and bowl food selections are also available for large functions.

---

## PRIVATE DINING ROOM AREAS

### MEZZANINE DECK

**Capacity**  
20 Seated | 25 Standing

Overlooking the bar, the mezzanine deck can accommodate up to 20 people seated on one long, central table. This space benefits from privacy whilst still allowing the atmosphere to be felt from the bar below.

### CURTAIN AREA

**Capacity**  
30 Seated

Found at the far end of the restaurant, this space is enclosed by a full length vibrant orange curtain, providing an intimate and exclusive space which can seat up to 30 people for a meal.

---

## SEMI EXCLUSIVE - REAR DINING ROOM HIRE

**Capacity**  
90 Seated | 110 Standing

This flexible space is perfect for a variety of events from private dining, cocktail receptions, daytime meetings and launches. Guests also benefit from access to the Waterside Terrace (weather permitting).

**CLICK HERE FOR MORE INFO**

**EMAIL:** [reservations@chai-ki.com](mailto:reservations@chai-ki.com)

**Mall Level -1, Crossrail Place, Canary Wharf,  
London E14 5AR**





# CLAYS

Take a shot at a fantastic interactive experience and make Clays your target for a guaranteed fun-filled event that everyone will love.

Enjoy a beautifully spacious private entertainment area ideal for playing, eating, drinking and celebrating, or make use of the stunning outdoor terrace.

All packages include unlimited gameplay in private or semi-private shooting pegs, fully loaded with delicious food and premium drink options. Set in a spectacular cocktail bar where you can enjoy dancing and post-game celebrations all in one place!

---

## PRIVATE ROOM

### PRIVATE SHOOTING ROOM

Features three shooting pegs, an exclusive bar and a beautifully spacious entertainment area. Ideal for guests looking for something extra special or for an exclusive space.

**Capacity**  
50 standing

---

## EXCLUSIVE HIRE

Features five shooting pegs, providing plenty of space to enjoy and space at our main bar. Ideal for large events and team socials.

**Capacity**  
350 standing

**CLICK HERE FOR MORE INFO**

Email: [Events@clays-group.com](mailto:Events@clays-group.com)

1 Cabot Square, Canary Wharf,  
London E14 4QJ



# DISHOOM

Nestled in a little corner of Wood Wharf, Dishoom brings to life the glittering-shimmering, metropolitan scene of '70s Bombay. In every community, eating is a means to bring people together – they are particularly good at this in India. Entertain your colleagues and dearest friends at Dishoom with a leisurely breakfast, light lunch or dinnertime feast. Simply book online, or for groups of 16 or more, please email [feasting@dishoom.com](mailto:feasting@dishoom.com). All will leave most sated and happy.

## SEMI-PRIVATE DINING

### MAIN RESTAURANT

60 seated

### THE FAMILY ROOM

30 seated

A semi-private space in the main dining hall.



**CLICK HERE FOR MORE INFO**

Email: [reservations@dishoom.com](mailto:reservations@dishoom.com)  
[feasting@dishoom.com](mailto:feasting@dishoom.com)

13 Water Street, Canary Wharf,  
London, E14 5GX

# ELECTRIC SHUFFLE

Gather your friends, family, and colleagues to celebrate the most wonderful time of the year together! Electric Shuffle offers the perfect setting for your Christmas socials, complete with beautiful decorations, seasonal cocktails, and friendly competition.

All of the event space options are a mixture of standing and seated space.

---

## PRIVATE ROOMS/AREAS

### THE JEMISON

Features 3 Shuffleboards

**Capacity**

50 standing

### THE BIBERDORF

Features 4 Shuffleboards

Private Bar

**Capacity**

120 standing

### THE SHARMAN

**Capacity**

90 standing

### THE FRANKLIN

**Capacity**

220 standing

---

## GROUND FLOOR EXCLUSIVE HIRE

Features 6 Shuffleboards

Main bar exclusively

**Capacity**

220 standing

---

## EXCLUSIVE HIRE

**Capacity**

350 standing

**CLICK HERE FOR MORE INFO**

**EMAIL:** [events@electricshuffle.com](mailto:events@electricshuffle.com)

10 Cabot Square, Canary Wharf,  
London E14 4EY



# EMILIA'S CRAFTED PASTA

Walking into Emilia's Crafted Pasta is like entering a bustling trattoria in Italy's Emilia Romagna region with an ambience created by natural terracotta-plastered walls bathed in natural light, rustic Iroko furniture, creamy crema marfil marble counters and hand-painted Italian tiles. Chefs making fresh pasta greet diners at the window in a special dedicated custom-made area visible from all sides.

---

## SEMI PRIVATE DINING

**Capacity**  
20-30 seated

---

## EXCLUSIVE HIRE

**Capacity**  
60 seated inside + 24 seated outside

More private dining and event options available on request

**CLICK HERE FOR MORE INFO**  
EMAIL: [hello@emiliaspasta.com](mailto:hello@emiliaspasta.com)

12 George Street, Wood Wharf,  
London E14 9QG



# FAIRGAME

Classic fairground games, reimagined. One unique, immersive experience. This is the funfair... exactly like you don't remember. An entertainment concept for adults only, Fairgame is bringing all the sights, sounds and non-stop fun of the fair to the heart of Canary Wharf. With London's hottest street food vendors, unique event spaces and expertly crafted drinks menus to get the good times flowing, Fairgame offers the ultimate experience, all under one roof

---

## PRIVATE ROOMS/AREAS

### HOLY DUCK LOUNGE

**Capacity**  
30 standing

### THE BIG TOP

**Capacity**  
70 standing

### CAROUSEL BAR

**Capacity**  
80 standing

### HOLY DUCK & CAROUSEL BAR

**Capacity**  
120 standing

---

## EXCLUSIVE HIRE

**Capacity**  
600 standing

**CLICK HERE FOR MORE INFO**

**EMAIL:** [events@wearefairgame.com](mailto:events@wearefairgame.com)

**25-35 Fisherman's Walk, Canary Wharf  
London E14 4DH**



# FEELS LIKE JUNE

Celebrate this festive season in style at Feels Like June, an all-day restaurant and café inspired by the sunny climes of California.

Open from dawn till dusk, Feels Like June serve up laid-back lunches and leisurely dinners, with a wine list that draws heavily from the Napa Valley region. Indulge in their carefully curated festive menu featuring highlights like cod croquettes, stuffed turkey breast, and pecan & walnut pie.

---

## PRIVATE ROOMS/AREAS

### Capacity

220 seated | 300 standing



[CLICK HERE FOR MORE INFO](#)

EMAIL: [vanessa.amato@mytribehotel.com](mailto:vanessa.amato@mytribehotel.com)

[juan.esquivel@mytribehotel.com](mailto:juan.esquivel@mytribehotel.com)

15 Water Street, Wood Wharf E14 5GX

# GAUCHO

On the banks of the River Thames, Gaucho Canary Wharf boasts spectacular river views from its panoramic terrace. Enjoy sipping cocktails and alfresco dining while enjoying the theatre of their open kitchen.

---

## SEMI-PRIVATE DINING

### RAISED DINING AREA

Capacity  
40 seated



[CLICK HERE FOR MORE INFO](#)  
EMAIL: [events@gauchorestaurants.com](mailto:events@gauchorestaurants.com)

29 Westferry Circus, Canary Wharf,  
London E14 8RR

# HAWKSMOOR

Hawksmoor's dedication to flavour and ethical sourcing has driven them to collaborate with like-minded individuals and businesses, ranging from Brixham fishermen to One Water as well as to the restaurant's being given the highest rating and sustainability by the Sustainable Restaurant Association. Hawksmoor features in the annual Best Companies to work for list every year for the last decade and is the first UK restaurant group to become a certified B Corp.

## PRIVATE DINING

Hawksmoor's private dining room, The Queenie Watts, seats up to 21 guests and is the perfect room for delegate days and business lunches, intimate dinners, wine tastings, engagement and wedding parties, and special occasions that require a personal touch. The room is equipped with AV and music system.

**Capacity**  
20 seated



[CLICK HERE FOR MORE INFO](#)  
EMAIL: [woodwharf@thehawksmoor.com](mailto:woodwharf@thehawksmoor.com)

1 Water Street, Wood Wharf,  
London E14 5GX



# HAWKSMOOR BAR

Hawksmoor Bar, formerly known as The Lowback, now seamlessly blends with the upstairs restaurant—meaning you can get the full Hawksmoor experience both in the restaurant and downstairs in the bar. Now with even more availability for large groups or spaces for parties and events, you can enjoy some of London's best group dining and event options. Their waterside terrace hosts standing events year-round with heaters and comfortable seating, its own sound system and dramatic views of Canary Wharf.

---

## SEMI-PRIVATE AREAS

**Capacity**  
20-160

---

## EXCLUSIVE HIRE

**Capacity**  
250



**CLICK HERE FOR MORE INFO**  
**EMAIL:** [leena.sangha@thehawksmoor.com](mailto:leena.sangha@thehawksmoor.com)

**1 Water Street, Canary Wharf,  
London E14 5GX**

# IN2SPORTS

At In2Sports, their specially designed Christmas packages offer a non-traditional experience for your Christmas party. Instead of the usual festivities, why not celebrate actively on the court with a wide range of sports activities, including the all-favourite dodgeball? Afterwards, enjoy their private bar where the real party can begin.

## EXCLUSIVE HIRE

Capacity  
150 standing



[CLICK HERE FOR MORE INFO](#)  
EMAIL: [info@in2sports.org](mailto:info@in2sports.org)

1 Water Street, Canary Wharf,  
London E14 5GX

# HUMBLE GRAPE

Humble Grape is a wine bar and restaurant in the heart of Canary Wharf located on the waterfront. Designed with events in mind, the venue boasts a beautiful Private Dining Room and Events space. Guests can explore over 450 artisan wines from independent producers from around the world.

---

## PRIVATE DINING

**Capacity**  
20 seated | 25 standing

---

## SEMI-PRIVATE HIRE

**Capacity**  
40 seated | 50 standing

---

## EXCLUSIVE HIRE

**Capacity**  
90 seated | 120 standing



**CLICK HERE FOR MORE INFO**  
EMAIL: [events@humblegrape.co.uk](mailto:events@humblegrape.co.uk)

18-20 Mackenzie Walk, Canary Wharf,  
London E14 4PH

# IBÉRICA

Ibérica Canary Wharf a little more rustic than the other restaurants in the portfolio, offering plenty of wooden surfaces, burgundy furniture, vintage posters and intimate dining areas. The space is split over two levels, with the option to dine in the bustling bar and lounge area on the ground floor, or at one of the quieter tables in the set-apart mezzanines upstairs. The venue is extremely versatile and caters well for larger events.

---

## SEMI-PRIVATE DINING

### THE VINOTECA

A quiet corner tucked away downstairs in the main restaurant, and just off the bar area.

#### Capacity

20 seated | 30 standing

### THE BAR

Offers guests a large space for standing drinks receptions.

#### Capacity

50 standing

### THE SMALL MEZZANINE

A tranquil space above the main restaurant with low ceilings and a cosy atmosphere.

#### Capacity

30 seated | 30 standing

### THE LARGE MEZZANINE

Housed above the main restaurant at the back of the building and is perfect for guests looking for their own area but still want to absorb the atmosphere of the bar.

#### Capacity

50 seated | 60 standing

---

## EXCLUSIVE HIRE

#### Capacity

110 seated | 170 standing

### CLICK HERE FOR MORE INFO

EMAIL: [events@ibericarestaurants.com](mailto:events@ibericarestaurants.com)

12 Cabot Square, Canary Wharf,  
London E14 4QQ



# KRICKET

Nestled on the North Dock, a reimagined space combines unique design with a menu showcasing modern Indian flavours. Cricket can cater to standing or seated events, parties, weddings, corporate functions, press and product launches as well as social gatherings with a food offering that ranges from canapés and bowl food to a full dining experience with all dishes served for your group to share.

---

## EXCLUSIVE HIRE

### Capacity

80 seated | 120 standing



**CLICK HERE FOR MORE INFO**  
EMAIL: [events@kricicket.co.uk](mailto:events@kricicket.co.uk)

6 Frobisher Passage,  
Canary Wharf, E14 5GX

# MALLOW

This festive season, mallow offers a five-course Yuletide menu that blends historical charm with contemporary plant-based dining. Ideal for those seeking a sophisticated and seasonal holiday meal, the menu promises a memorable dining experience. mallow serves seasonal food inspired by cuisines from all over the world. Their aim is minimal waste wherever possible, with ingredients sourced from small sustainable businesses, including those right on their doorstep.

---

## SEMI-PRIVATE DINING

### HEATED TERRACE

Capacity  
40 seated

---

## PRIVATE DINING

### FIRST FLOOR

Capacity  
50 seated

[CLICK HERE FOR MORE INFO](#)

EMAIL: [events@mallowlondon.com](mailto:events@mallowlondon.com)

12 Park Drive, Canary Wharf,  
London E14 9ZW



# MARKET HALLS

You'll find something for everyone this Christmas at Market Halls. We're home to countless cuisines, your favourite drinks and a roster of live music, seasonal sing-a-longs and entertainment. Making us the destination of choice for fuss-free festive celebrations.

Our 10 food spots include Mexican maestros DF Tacos, hand thrown roti's from the Roti King himself at GoPals Corner and gourmet kebabs from the one and only Le Bab as well as many more.

---

## SEMI PRIVATE

### THE WATERSIDE

**Capacity**  
60 seated | 100 standing

---

## PRIVATE DINING

### THE COLONNADE

**Capacity**  
130 people seated | 130 standing

**CLICK HERE FOR MORE INFO**

**EMAIL:** [events@markethalls.co.uk](mailto:events@markethalls.co.uk)

25 North Colonnade,  
Canary Wharf, E14 5HD



# NO35 MACKENZIE WALK

No35 Mackenzie Walk would be delighted to host your Christmas event this festive season. Whether you are looking to book an event for your company, a smaller team celebration or colleagues, friends and family, they have a variety of spaces to suit your needs. From intimate drinks to full venue hires; book your spot for a drinks reception, cocktails & canapés, turkey feasting or a three course festive lunch or dinner. There is a wonderful Event and Reservations team on hand, who will help you create a celebration to remember.

## PRIVATE DINING

**Capacity**  
80 seated

## SEMI EXCLUSIVE HIRE

**Capacity**  
150 standing

## EXCLUSIVE HIRE

**Capacity**  
250 standing

**CLICK HERE FOR MORE INFO**

**EMAIL:** [reservations@no35mackenziewalk.co.uk](mailto:reservations@no35mackenziewalk.co.uk)

**29-35 Mackenzie Walk, Canary Wharf,  
London E14 4PH**





# PATTY&BUN

Located in the heart of Wood Wharf, Patty&Bun is your one stop shop for an epic team lunch, boozy bash or even full venue hire for something more bespoke. The team can tailor menus and packages to help your event run with ease and keep your guests happy. Expect great burgers, great service and great vibes!

---

## SEMI-PRIVATE DINING

**Capacity**  
25 Banquet Seating

## EXCLUSIVE HIRE

**Capacity**  
60 seated | 105 standing | 40 terrace



**CLICK HERE FOR MORE INFO**  
EMAIL: [canarywharf@pattyandbun.co.uk](mailto:canarywharf@pattyandbun.co.uk)

15 Park Drive, Wood Wharf,  
London E14 9GG

# PERGOLA ON THE WHARF

Nestled in Crossrail Place, Pergola On The Wharf is a beautiful bar and restaurant, grown for naturally good times and serving high-quality food and drink in picturesque surroundings. Branch out of the every day to find your perfect space amongst two substantial bars, a beautiful open kitchen, magnificent outdoor terrace or private dining room, all strewn with real flowers, ferns and vines to create a botanical paradise.

---

## PRIVATE DINING

When privacy is preferred, look no further than the Private Dining Room at Pergola On the Wharf.

**Capacity**  
12 seated | 20 standing

---

## EXCLUSIVE HIRE

Perfectly suited to host any event; from the whole office party to intimate private dinners. Two substantial bars and a beautiful open kitchen form the centrepiece of the venue.

**Capacity**  
750 standing | 200 terrace

**CLICK HERE FOR MORE INFO**  
EMAIL: [events@incipio-group.co.uk](mailto:events@incipio-group.co.uk)

Crossrail Place, Canary Wharf,  
London E14 5AR



# ROE

Surrounded by a unique interior décor, enjoy waterside views across Wood Wharf whilst indulging in a spread of culinary delights. Roe celebrates the ethical bounty of the land and sea, bringing non-target fish, carefully managed game and regenerative crops to the forefront.

---

## PRIVATE DINING

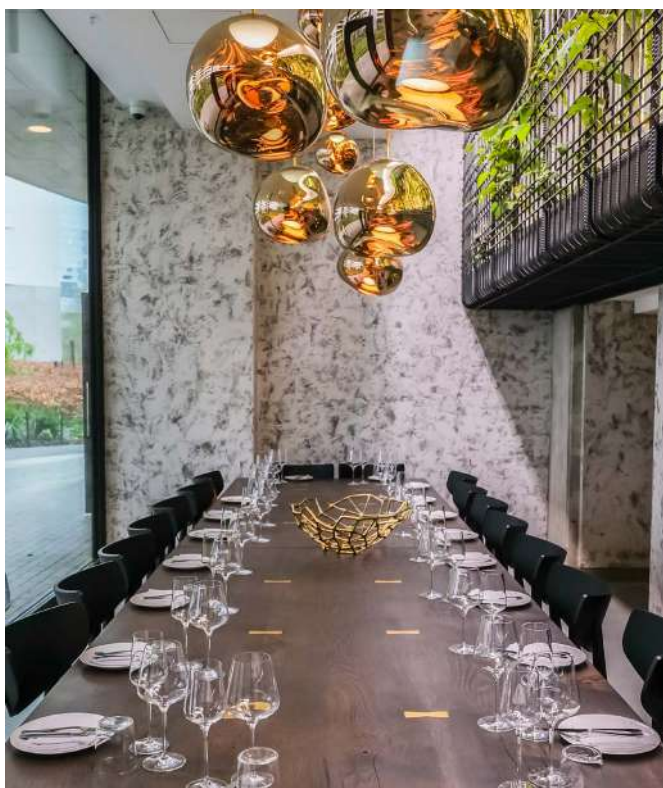
### THE GARDEN ROOM

Capacity  
26 seated

---

## EXCLUSIVE HIRE

Capacity  
250 standing



[CLICK HERE FOR MORE INFO](#)

EMAIL: [reservations@roerestaurant.co.uk](mailto:reservations@roerestaurant.co.uk)

5 Park Drive, Wood Wharf,  
London, E14 9GG

# ROKA

Overlooking Canada Square Park, the lounge offers plenty of natural light and an impressive view, which make it the ideal space for your group event.

## GROUP DINING

### THE LOUNGE

Capacity  
18 seated

### THE TERRACE

Capacity  
30 seated | 80 standing



[CLICK HERE FOR MORE INFO](#)

EMAIL: [infocanarywharf@rokarestaurant.com](mailto:infocanarywharf@rokarestaurant.com)

Upper Level 1, The Park Pavilion, Canary Wharf  
London E14 5FW

# THE ALCHEMIST

Step inside a den of molecular mixology, where unexpected cocktail creations are fashioned right before your eyes. Savour the mouth-watering menu with delectable all-day dining in The Alchemist's largest restaurant to date, spanning two floors inside and out. There's no better stage for a world of theatre to be served.

---

## SEMI-PRIVATE HIRE

### RESTAURANT

Capacity  
86 seated

### DOWNSTAIRS OUTDOOR TERRACE

Capacity  
80 seated

### UPSTAIRS TERRACE

Capacity  
75 standing

### DOWNSTAIRS BAR

Capacity  
50 standing

---

## EXCLUSIVE HIRE

Capacity  
300 standing

**CLICK HERE FOR MORE INFO**

**EMAIL:** [reservations@thealchemistbars.com](mailto:reservations@thealchemistbars.com)

Reuters Plaza, Canary Wharf,  
London, E14 5AJ



# THE BOATHOUSE

Inspired by intimate speakeasies and chic Parisian jazz clubs, The Boathouse boasts modern facilities, stylish décor, and a large rooftop area with ample seating. There is a bar on board, perfect for hosting parties, events, celebrations and corporate functions.

---

## EXCLUSIVE HIRE

### Capacity

200 standing & 25 seated  
(rooftop seating, weather permitting)



**CLICK HERE FOR MORE INFO**  
**EMAIL:** [bookings@boathouselondon.co.uk](mailto:bookings@boathouselondon.co.uk)

**Boardwalk, Wood Wharf,  
London E14 9SF**

# THE BREAKFAST CLUB CAF

The Breakfast Club Caf in Canary Wharf is an exceptional venue for private hire, accommodating up to 150 guests in a vibrant and versatile space. Perfect for evening and corporate events, it features a stage, full sound and lighting options, and a bar service area, complimented by delicious sharing food options to elevate your event experience.

## EXCLUSIVE HIRE

### Capacity

Up to 150 standing/seating mix



[CLICK HERE FOR MORE INFO](#)  
EMAIL: [ash@lovetbc.com](mailto:ash@lovetbc.com)

Crossrail Place, London E14 5AR

# THE BREAKFAST PUB

The Breakfast Pub Canary Wharf is the perfect venue for private hire or semi-private space on the Bar Mezzanine, offering a unique blend of classic British pub charm and modern flair. Ideal for corporate breakfast, lunch events, or evening gatherings or events, the space features a cosy atmosphere with a great selection of beers, cocktails, and delicious food, ensuring a memorable experience for any occasion.

---

## MEZZANINE

### Capacity

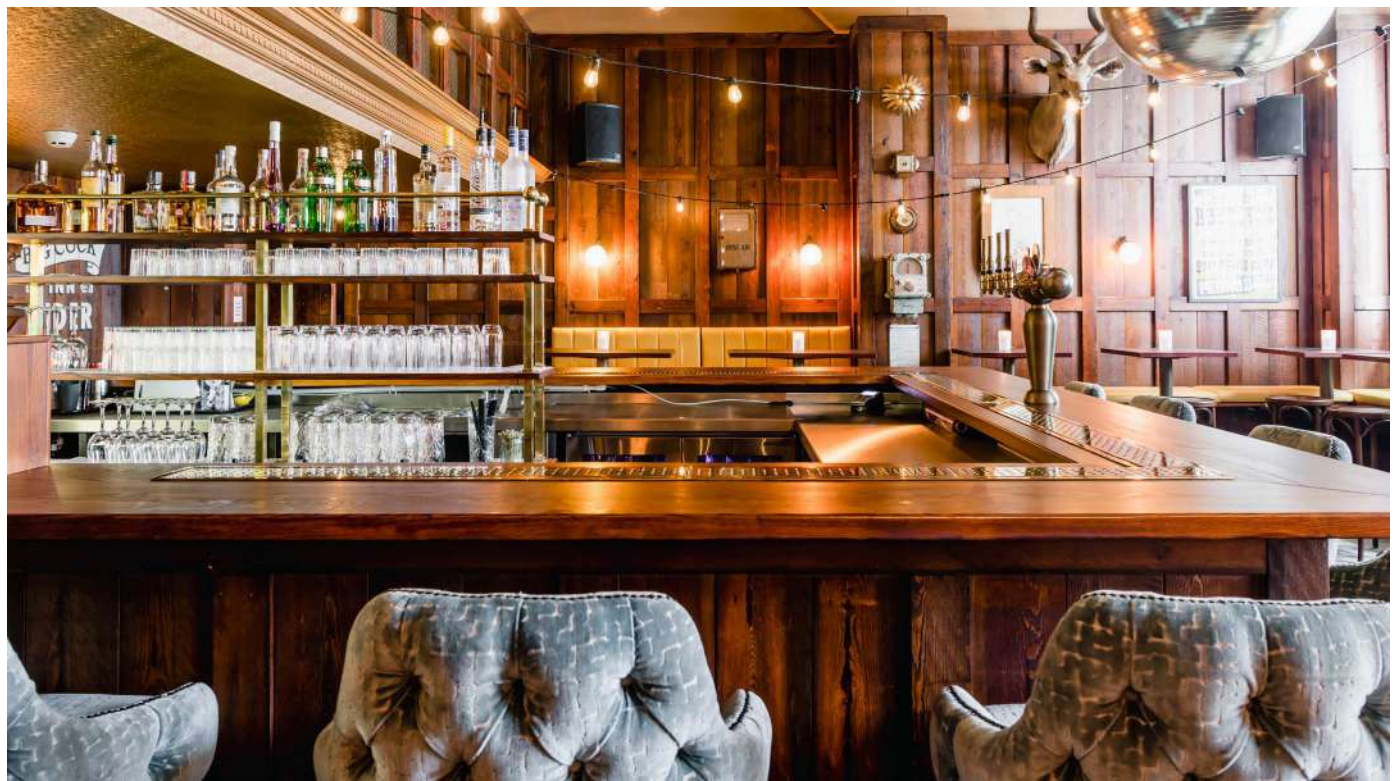
35 people standing/seating mix

---

## EXCLUSIVE HIRE

### Capacity

90 people Standing/seating mix



[CLICK HERE FOR MORE INFO](#)

EMAIL: [ash@lovetbc.com](mailto:ash@lovetbc.com)

Crossrail Place, London E14 5AR



# THE COCKTAIL CLUB

Get ready to sleigh the holiday season in this cocktail wonderland. Rock all the way round the Christmas tree at one of the hottest party spots in town. The Cocktail Club knows two things, good cocktails and good times, and they'll be serving them up by the truckload for every get together, big or small.

---

## EXCLUSIVE HIRE

### Capacity

200 standing | 100 seated



**CLICK HERE FOR MORE INFO**  
**EMAIL:** [info@thecocktailclub.com](mailto:info@thecocktailclub.com)

**Cabot Square, Canary Wharf,  
London E14**

# THE CUBE

Do you have what it takes to beat THE CUBE? Playing seven iconic games from the original TV series, teams of two must take on deceptively simple tasks within the high-pressure confines of THE CUBE. With challenges designed to test your different physical and mental skills, including balance, speed and judgement, there is no room for error. Recharge between challenges with award-winning burgers from THE BUTCHER and authentic pizza from Toni Loco, plus premium drinks and cocktails from our six in-venue bars.

---

## PRIVATE ROOMS/AREAS

### VIP BAR

3 CUBES | 20 players | Private bar and catering | Private toilet facilities

**Capacity**  
48

### PERSPECTIVE BAR

7 CUBES | 48 players | Private bar and catering

**Capacity**  
100

### SUMMIT BAR

Private bar and catering | Projector

**Capacity**  
34 seated

### REPLAY BAR

Private bar and catering | Projector

**Capacity**  
34 seated

---

## EXCLUSIVE HIRE

**Capacity**  
440

**CLICK HERE FOR MORE INFO**

Email: [groupbookings@bookthecube.com](mailto:groupbookings@bookthecube.com)

14 Charter Street, Canary Wharf,  
London E14 5GAJ



# THE IVY IN THE PARK

Proudly showcasing the finest British cuisine, The Ivy In The Park is nestled in the heart of Canary Wharf and offers a beautiful dining experience perfect for any occasion. As well as the main dining area and bar, it offers a stunning private dining room, perfect for a Christmas celebration to remember.

---

## PRIVATE DINING

Explore their two private dining spaces that cater to a variety of different events. Guests can enjoy bespoke sharing menus available from breakfast through to dinner, as well as canapés and a selection of wines and cocktails.

### THE BUTTERFLY ROOM

The Butterfly private dining room is complete with its very own secluded outdoor area. Showcasing a striking private bar that creates a glamorous backdrop whatever the occasion, it is the perfect setting to host corporate events, business meetings and private parties.

**Capacity**  
30 seated | 30 standing

---

## EXCLUSIVE HIRE

### FIRST FLOOR

**Capacity**  
50 seated

## ENTIRE VENUE UPON REQUEST

**CLICK HERE FOR MORE INFO**

**EMAIL:** [events@theivy-collection.com](mailto:events@theivy-collection.com)

**50 Canada Square, Canary Wharf,  
London E14 5FW**



# THE PARLOUR

An inviting bar & restaurant in Canary Wharf with seasonal menus, tempting cocktails, and cellar selection wines.

---

## THE COCKTAIL LOUNGE

A secret-garden inspired cocktail lounge Ideal for standing receptions, drinks, and canapés.

**Capacity**

38 seated | 125 standing

---

## MAIN BAR AND DINING AREA

Ideal for large events such as celebrations & corporate events.

**Capacity**

75 seated | 250 standing



**CLICK HERE FOR MORE INFO**

**EMAIL:** [info@theparlourbar.co.uk](mailto:info@theparlourbar.co.uk)

**The Park Pavilion, Canada Square,  
London E14 5FW**

# THE PELLIGON

Timeless design meets state-of-the-art engineering at The Pelligon, with exclusive use for up to 1,000 guests. Designed by renowned architect Cesar Pelli as the sister to New York's Winter Garden, The Pelligon blends art deco elements with futuristic flair for a see-through look that stands out. Soaring ceilings and floor-to-sky glass frontage arc into an eye-catching 27-metre glass dome that invites natural light into a space to shape as you please. The venue further benefits from a mezzanine level, a private breakout room, a waterside terrace and impeccable built-in facilities.

---

## EXCLUSIVE HIRE

**Capacity**  
1,000



**CLICK HERE FOR MORE INFO**  
**EMAIL:**[hello@thepelligon.com](mailto:hello@thepelligon.com)

**43 Bank Street, Canary Wharf,  
London E14 5NX**

# WAHACA

Wahaca brings the vibrant energy of Mexico into the heart of Canary Wharf. Available spaces include a bookable private Terrace Bar overlooking the scenic Canada Square Park alongside the main restaurant. Choose from the event-friendly canapés and drinks menu or dishes from the main menu. Choose from the flexible spaces to welcome small and large groups.

---

## PRIVATE DINING

Exclusive Terrace Bar space tucked away, with an elevated position above Canada Square Park.

**Capacity**

40 seated | 125 standing

---

## EXCLUSIVE HIRE

The entire venue can be hired on an exclusive basis for any given occasion



**CLICK HERE FOR MORE INFO**

**EMAIL:** [canarywharf@wahaca.co.uk](mailto:canarywharf@wahaca.co.uk)

**Upper Level 1, The Park Pavilion, Canary Wharf,  
London E14 5FW**

# TRIBE HOTEL

And if you are looking for somewhere to stay...

## ROOM TO UNWIND

TRIBE London Canary Wharf has 312 rooms set across six floors. Each room benefits from natural daylight, floor to ceiling windows, king-size beds, complimentary high-speed WIFI, stylish yet functional interiors with desks, and well-equipped bathrooms with rainfall showers.

## WORK. PLAY. EAT. MEET

The ground floor at TRIBE London Canary Wharf is home to the hotel's free-flowing, 24-hour 'Social Hub' with spaces to suit everyone, whether guests are there to work, play, eat or meet. Flooded with natural light and opening up onto the hotel's sun-soaked terrace, it's open not only to those staying at the hotel, but inclusive to all.

## DRINKING & DINING – 24/7

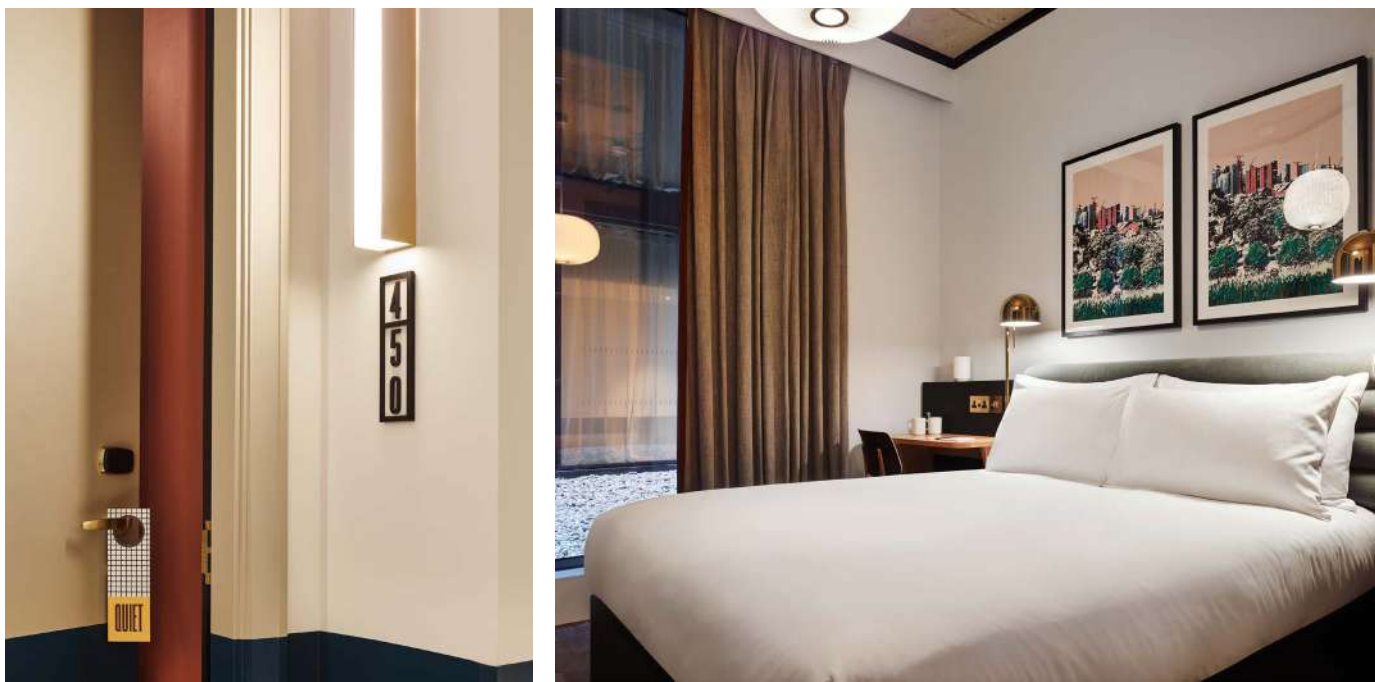
When on the go, TRIBE's 24-hour **Grab & Go** counter offers everything to satisfy modern travellers' needs. For a relaxed sit-down affair, inspired by the sunny climes of California, Feels Like June is the hotel's 200-cover all-day dining destination.



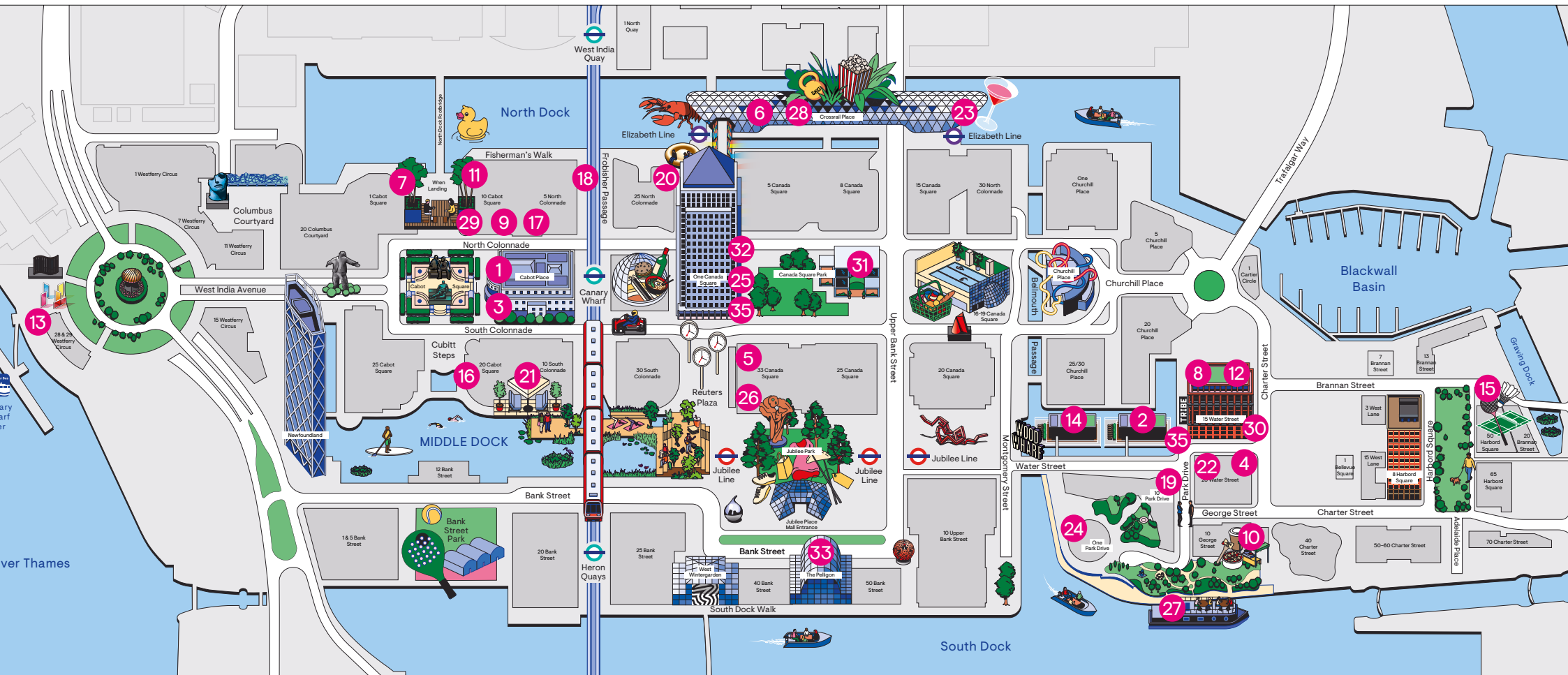
**CLICK HERE FOR MORE INFO**

**EMAIL:** [reservations.canarywharf@mytribehotel.com](mailto:reservations.canarywharf@mytribehotel.com)

**15 Water Street, Wood Wharf,  
London E14 9QG**



# CANARY WHARF MAP



- |  |   |   |   |   |   |  |
|--|---|---|---|---|---|--|
| 1 <b>Boisdale</b><br>Cabot Place             | 6 <b>Chai Ki</b><br>Crossrail Place               | 11 <b>Fairgame</b><br>Fisherman's Walk    | 16 <b>Humble Grape</b><br>Mackenzie Walk  | 21 <b>No35 Mackenzie Walk</b><br>Mackenzie Walk   | 26 <b>The Alchemist</b><br>Reuters Plaza        | 31 <b>The Ivy in the Park</b><br>Canada Square |
| 2 <b>Brasserie Marceline</b><br>Water Street | 7 <b>Clays</b><br>Cabot Square                    | 12 <b>Feels like June</b><br>Water Street | 17 <b>Ibérica</b><br>Cabot Square         | 22 <b>Patty&amp;Bun</b><br>Park Drive             | 27 <b>The Boathouse</b><br>Boardwalk            | 32 <b>The Parlour</b><br>The Park Pavillion    |
| 3 <b>Brera Lounge</b><br>Cabot Place         | 8 <b>Dishoom</b><br>Water Street                  | 13 <b>GaUCHO</b><br>Westferry Circus      | 18 <b>Kricket</b><br>Frobisher Passage    | 23 <b>Pergola on the Wharf</b><br>Crossrail Place | 28 <b>The Breakfast Club</b><br>Crossrail Place | 33 <b>The Pelligon</b><br>Bank Street          |
| 4 <b>Broadwick Studio</b><br>Water Street    | 9 <b>Electric Shuffle</b><br>Cabot Square         | 14 <b>Hawksmoor</b><br>Water Street       | 19 <b>mallow</b><br>Park Drive            | 24 <b>Roe</b><br>Park Drive                       | 29 <b>The Cocktail Club</b><br>Cabot Square     | 34 <b>Wahaca</b><br>The Park Pavillion         |
| 5 <b>Caravan</b><br>Reuters Plaza            | 10 <b>Emilia's Crafted Pasta</b><br>George Street | 15 <b>In2Sports</b><br>Harbord Square     | 20 <b>Market Halls</b><br>North Colonnade | 25 <b>Roka</b><br>The Park Pavillion              | 30 <b>The Cube</b><br>Charter Street            | 35 <b>Tribe Hotel</b><br>Water Street          |



**FOR MORE INFORMATION PLEASE CONTACT  
RETAIL.PROMOTIONS@CANARYWHARF.COM**



[canarywharf.com](http://canarywharf.com)

📷 | 🎵 TikTok [canarywharflondon](https://www.tiktok.com/@canarywharflondon)