

CANARY WHARF



# UNFORGETTABLE EXPERIENCES

The best places for mixing, mingling,  
and networking in the Wharf



# A VIBRANT MIXED USE COMMUNITY OFFERING AN EXTRAORDINARY ENVIRONMENT

Canary Wharf is built on connections, creating a community of people and organisations with opportunities to come together, grow, evolve, discuss, create ideas and make things happen.

Central to bringing people together are our event spaces and experiences, offering a variety of unique venues for every occasion. From large team meetings and workshops to corporate parties, private dining, team bonding and more, we've got the space and the opportunities to showcase, engage, impress and bring people together.

Looking for the right location for your next event?  
Read on to discover more.

ROKA

THE IVY

PERGOLA  
ON THE WHARF

TRIBE

GOBOAT

STICKS | N | SUSHI

CAPITAL  
KARTS

MMY  
MERCATO METROPOLITANO

DISHOOM

IBÉRICA  
CANARY WHARF



Patty&Bun



Blacklock

ROE  
WOOD WHARF

KRICKET

mallow

THE ALCHEMIST

CARAVAN

Emilia's  
CRAFTED PASTA

HAWKSMOOR



Nº35  
Mackenzie  
Walk

FEELS LIKE  
JUNE

THE BOATHOUSE

THE  
CUBE  
CANARY WHARF

PEDLER

ELECTRIC  
SHUFFLE



HUMBLE GRAPE

wahaca  
mexican  
market  
eating

the parlour  
bar • kitchen • cocktail lounge

BOISDALE

GAUCHO

SIX by NICO

# BOISDALE

A lively restaurant and music venue serving modern British food, comprising of the UK's largest whisky bar, a garden terrace, the Hine bar, a cigar lounge and library, overlooking Cabot Square with the City's skyline in the distance.

## PRIVATE DINING

### THE JACK VETTRIANO & THE JOHNNIE WALKER ROOMS

Perfect for intimate dinners, meetings, brainstorming & working lunches.

**Capacity**  
12 seated

### THE PAUL GAUGUIN ROOM

This room has superb views of the City of London's skyline and offers complete privacy. There is a TV screen installed in this room available for use.

**Capacity**  
24 seated | 40 standing

### THE GALLERY ROOM

Located in the main restaurant, this large room is fitted with a ceiling projector and a screen.

**Capacity**  
40 seated | 60 standing

## EXCLUSIVE HIRE

The whole venue is available to hire for private events, including wedding receptions.

**Capacity**  
250 seated | 500 standing

**CLICK HERE FOR MORE INFO**

**EMAIL:** [reservations@boisdale-cw.co.uk](mailto:reservations@boisdale-cw.co.uk)

**Upper Level 1, Cabot Place, Canary Wharf,  
London E14 4QT**



# BRERA LOUNGE

Nestled amidst the bustling streets of Canary Wharf lies Brera Lounge, a captivating haven reminiscent of an enchanted forest. Here, guests are treated to the exquisite flavours of authentic Italian pizza, meticulously crafted cocktails, and the soothing embrace of shisha. As you step into this magical realm, prepare to be transported to a world where every moment is infused with warmth, sophistication, and an undeniable sense of wonder.

---

## EXCLUSIVE HIRE

**Capacity**  
200 seated



**CLICK HERE FOR MORE INFO**  
EMAIL: [tasso@italika.co.uk](mailto:tasso@italika.co.uk)

1 Cabot Square, Canary Wharf,  
London E14 4QT

# BROADWICK STUDIO

Broadwick Studio is a hybrid event space wholly committed to flexibility and creativity. Purpose-built for agile and diverse expression, Broadwick Studio is a flexible self-contained space for hire in Canary Wharf promising intimate immersive gatherings that boldly stand out. Allowing a capacity of up to 120 people, Broadwick Studio is a plug-and-play space purposefully built with creativity in mind suited for meetings, parties, brand experiences, receptions, dinners and more.'

---

## EXCLUSIVE HIRE

**Capacity**  
120 standing



**CLICK HERE FOR MORE INFO**  
**EMAIL:** [broadwickstudio@broadwick.com](mailto:broadwickstudio@broadwick.com)

**30 Water Street Canary Wharf**  
**London E14 5GX**

# CARAVAN

Located in the heart of Canary Wharf, sitting alongside Konstantin Grcic's iconic 'six public clocks' art work, Caravan Canary Wharf brings all day dining to this bustling business and residential district.

---

## SEMI-PRIVATE DINING

The Private Dining Room in Canary Wharf is a semi-private room perfect for business breakfasts, lunches, brunches, drinks parties and dinner feasting.

### THE MAPLE ROOM

**Capacity**  
25 seated | 30 standing

---

## EXCLUSIVE HIRE

**Capacity**  
100 seated | 150 standing



**CLICK HERE FOR MORE INFO**  
**EMAIL:** [events@caravanrestaurants.co.uk](mailto:events@caravanrestaurants.co.uk)

**Reuters Plaza, Canary Wharf,  
London E14 5AJ**

# CHAI KI

Chai Ki provides a contemporary drinking and dining experience, with an acclaimed menu of modern Indian soul food. The drinks range features craft and in-house-infused beers, a carefully selected Wine list and seasonal signature cocktails.

Set 'feasting' menus are popular with groups, but bespoke menus can be created to meet guest requirements. Canapes and bowl food selections are also available for large functions.

---

## PRIVATE DINING ROOM AREAS

### MEZZANINE DECK

#### Capacity

20 Seated | 25 Standing

Overlooking the bar, the mezzanine deck can accommodate up to 20 people seated on one long, central table. This space benefits from privacy whilst still allowing the atmosphere to be felt from the bar below.

### CURTAIN AREA

#### Capacity

30 Seated

Found at the far end of the restaurant, this space is enclosed by a full length vibrant orange curtain, providing an intimate and exclusive space which can seat up to 30 people for a meal.

---

## SEMI EXCLUSIVE - REAR DINING ROOM HIRE

#### Capacity

90 Seated | 110 Standing

This flexible space is perfect for a variety of events from private dining, cocktail receptions, daytime meetings and launches. Guests also benefit from access to the Waterside Terrace (weather permitting).

### CLICK HERE FOR MORE INFO

EMAIL: [reservations@chai-ki.com](mailto:reservations@chai-ki.com)

Mall Level -1, Crossrail Place, Canary Wharf,  
London E14 5AR



# CLAYS

Take a shot at a fantastic interactive experience and make Clays your target for a guaranteed fun-filled event that everyone will love.

Enjoy a beautifully spacious private entertainment area ideal for playing, eating, drinking and celebrating, or make use of the stunning outdoor terrace.

All packages include unlimited gameplay in private or semi-private shooting pegs, fully loaded with delicious food and premium drink options. Set in a spectacular cocktail bar where you can enjoy dancing and post-game celebrations all in one place!

---

## PRIVATE ROOM / AREAS

### SEMI-EXCLUSIVE HIRE

200 standing

Exclusive use of the stunning outdoor terrace. Ideal for large groups.

### PRIVATE SHOOTING ROOM

50 standing

Features three shooting pegs, an exclusive bar and a beautifully spacious entertainment area. Ideal for guests looking for something extra special or for an exclusive space.

---

## EXCLUSIVE HIRE

### Capacity

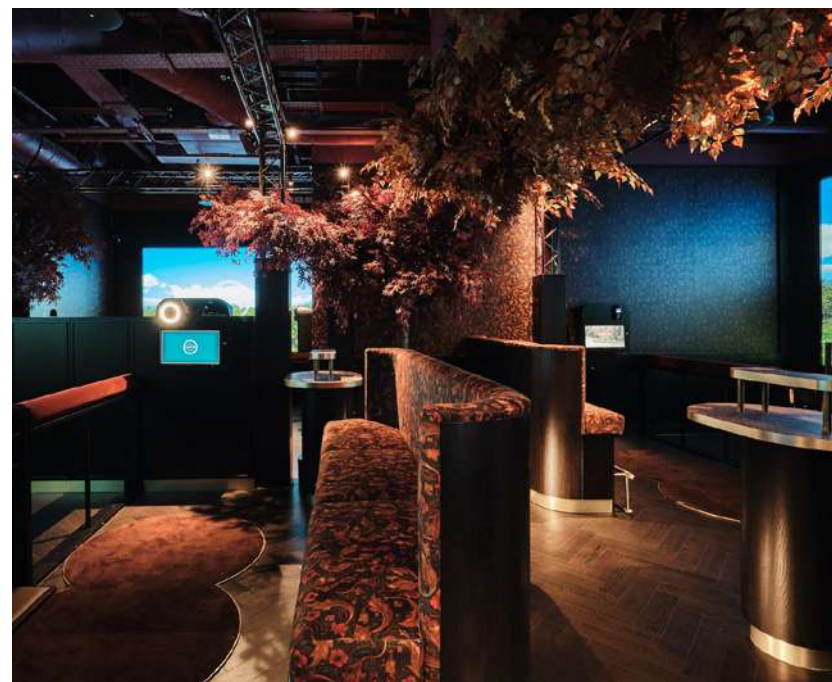
350 standing

Features five shooting pegs, providing plenty of space to enjoy and space at our main bar. Ideal for large events and team socials.

**CLICK HERE FOR MORE INFO**

Email: [Events@clays-group.com](mailto:Events@clays-group.com)

1 Cabot Square, Canary Wharf,  
London E14 4QJ





# DISHOOM

Nestled in a little corner of Wood Wharf, Dishoom brings to life the glittering-shimmering, big-business, metropolitan scene of '70s Bombay.

In every community, eating is a means to celebrate and to bring people together. We are particularly good at this in India. Every celebration has food in the middle of it, invariably leaving us all thoroughly sated, happy and burping (considered a courteous gesture). Entertain your colleagues and dearest friends at Dishoom with a leisurely breakfast, light lunch, or linger a while with a dinnertime feast.

---

## SEMI-PRIVATE DINING

### THE FAMILY ROOM

30 seated

A semi-private space in the main dining hall.



[CLICK HERE FOR MORE INFO](#)

Email: [reservations@dishoom.com](mailto:reservations@dishoom.com)

13 Water Street, Canary Wharf,  
London, E14 5GX

# ELECTRIC SHUFFLE

Electric Shuffle is a bar built for friends, by friends set on Cabot Square. Featuring two spectacular bars, brunch, cocktails and Shuffleboard reimagined – welcoming groups of any size. Featuring four immersive games, a Games master, a dedicated host for your group, a live leaderboard and dramatic finale it's a truly exhilarating team experience.

---

## PRIVATE ROOMS/AREAS

### THE JEMISON

Features 3 Shuffleboards

#### Capacity

50 standing

### THE BIBERDORF

Features 4 Shuffleboards

Private Bar

#### Capacity

120 standing

---

## GROUND FLOOR EXCLUSIVE HIRE

Features 6 Shuffleboards

Main bar exclusively

#### Capacity

220 standing

**CLICK HERE FOR MORE INFO**

**EMAIL:** [bookings@electricshuffle.com](mailto:bookings@electricshuffle.com)

10 Cabot Square, Canary Wharf,  
London E14 4EY



# EMILIA'S CRAFTED PASTA

Walking into Emilia's Crafted Pasta is like entering a bustling trattoria in Italy's Emilia Romagna region with an ambience created by natural terracotta-plastered walls bathed in natural light, rustic Iroko furniture, creamy crema marfil marble counters and hand-painted Italian tiles. Chefs making fresh pasta greet diners at the window in a special dedicated custom-made area visible from all sides.

---

## SEMI PRIVATE DINING

**Capacity**  
20-30 seated

---

## EXCLUSIVE HIRE

**Capacity**  
60 seated inside + 24 seated outside

[More private dining and event options available on request](#)



**CLICK HERE FOR MORE INFO**  
**EMAIL:** [hello@emiliaspasta.com](mailto:hello@emiliaspasta.com)

**12 George Street, Wood Wharf,  
London E14 9QG**

# FAIRGAME

Classic fairground games, reimagined. One unique, immersive experience. This is the funfair... exactly like you don't remember. An entertainment concept for adults only, Fairgame is bringing all the sights, sounds and non-stop fun of the fair to the heart of Canary Wharf.

With London's hottest street food vendors, unique event spaces and expertly crafted drinks menus to get the good times flowing, Fairgame offers the ultimate experience, all under one roof.

With games and drinks packages starting from just £35pp, get in touch with the team now to discuss your next event or social.

---

## PRIVATE ROOMS/AREAS

### HOLY DUCK LOUNGE

Capacity  
35 standing

### CAROUSEL BAR

Capacity  
80 standing

### THE BIG TOP

Capacity  
70 standing

### GOLDEN TICKET

Capacity  
220 standing

---

## EXCLUSIVE HIRE

Capacity  
600 standing

**CLICK HERE FOR MORE INFO**

EMAIL: [events@wearefairgame.com](mailto:events@wearefairgame.com)

25-35 Fisherman's Walk, Canary Wharf  
London E14 4DH



# FEELS LIKE JUNE

Feels Like June is an all-day restaurant and cafe, with menu and atmosphere inspired by the sunny climes of California. An bright and fresh space that is open from dawn til dusk, serving up coffees and pancakes in the mornings, followed up by laid back lunches and leisurely dinners, with a wine list that draws heavily from the Napa Valley and other distinguished Californian growing regions.

---

## PRIVATE ROOMS/AREAS

### Capacity

220 seated | 300 standing



**CLICK HERE FOR MORE INFO**

**EMAIL:** [vanessa.amato@mytribehotel.com](mailto:vanessa.amato@mytribehotel.com)  
[juan.esquivel@mytribehotel.com](mailto:juan.esquivel@mytribehotel.com)

**12 George Street, Wood Wharf,  
London E14 9QG**

# HAWKSMOOR

Hawksmoor's dedication to flavour and ethical sourcing has driven them to collaborate with like-minded individuals and businesses, ranging from Brixham fishermen to One Water as well as to the restaurant's being given the highest rating and sustainability by the Sustainable Restaurant Association. Hawksmoor features in the annual Best Companies to work for list every year for the last decade and is the first UK restaurant group to become a certified B Corp.

## PRIVATE DINING

Hawksmoor's private dining room, The Queenie Watts, seats up to 21 guests and is the perfect room for delegate days and business lunches, intimate dinners, wine tastings, engagement and wedding parties, and special occasions that require a personal touch. The room is equipped with AV and music system.

**Capacity**  
20 seated

**CLICK HERE FOR MORE INFO**  
EMAIL:[woodwharf@thehawksmoor.com](mailto:woodwharf@thehawksmoor.com)

1 Water Street, Wood Wharf,  
London E14 5GX



# HAWKSMOOR BAR

Hawksmoor Bar can be found underneath their restaurant, nestled on the Water in Canary Wharf's Wood Wharf district. The water-level bar and events venue offer a variety of different spaces and as well a beautiful outdoors terrace with stunning views – making it perfect, summer parties, corporate and networking events, all day delegate meetings, after-work drinks, company socials, birthdays, and everything in between. You can either hire a semi-private area or go all out and hire the whole bar and summer terrace for sun-drenched celebrations.

---

## SEMI-PRIVATE AREAS

Capacity  
20-160

---

## EXCLUSIVE HIRE

Capacity  
250-300



**CLICK HERE FOR MORE INFO**  
EMAIL: [woodwharf@thehawksmoor.com](mailto:woodwharf@thehawksmoor.com)

1 Water Street, Canary Wharf,  
London E14 5GX

# GAUCHO

On the banks of the River Thames, Gaucho Canary Wharf boasts spectacular river views from its panoramic terrace. Enjoy sipping cocktails and alfresco dining while enjoying the theatre of their open kitchen.

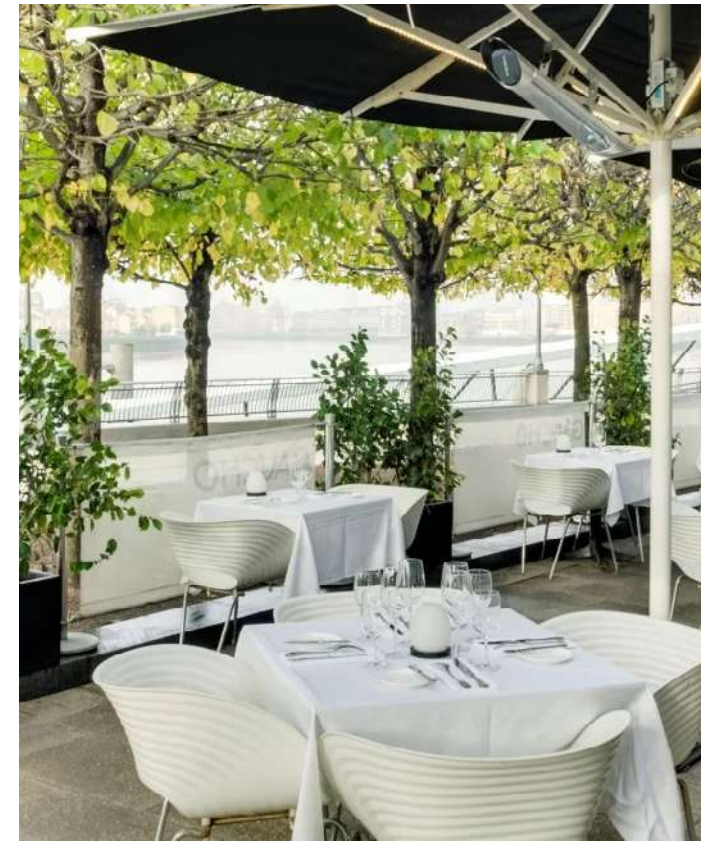
## SEMI-PRIVATE DINING

### RAISED DINING AREA

Capacity  
40 seated

### OUTDOOR TERRACE

Capacity  
80 seated



**CLICK HERE FOR MORE INFO**  
EMAIL: [events@gauchorestaurants.com](mailto:events@gauchorestaurants.com)

29 Westferry Circus, Canary Wharf,  
London E14 8RR



# HUMBLE GRAPE

Situated alongside Canary Wharf's Middle Dock, the Humble Grape wine bar enjoys a relaxed atmosphere and a range of over 400 artisan wines as well as a number of private hire opportunities.

---

## PRIVATE DINING

**Capacity**  
20 seated | 25 standing

---

## SEMI-PRIVATE EVENT SPACE

**Capacity**  
40 seated | 50 standing

---

## EXCLUSIVE HIRE

**Capacity**  
90 seated | 120 standing

**CLICK HERE FOR MORE INFO**  
EMAIL: [events@humblegrape.co.uk](mailto:events@humblegrape.co.uk)

18-20 Mackenzie Walk, Canary Wharf,  
London E14 4PH



# IBÉRICA

Ibérica Canary Wharf a little more rustic than the other restaurants in the portfolio, offering plenty of wooden surfaces, burgundy furniture, vintage posters and intimate dining areas. The space is split over two levels, with the option to dine in the bustling bar and lounge area on the ground floor, or at one of the quieter tables in the set-apart mezzanines upstairs. The venue is extremely versatile and caters well for larger events.

---

## SEMI-PRIVATE DINING

### THE VINOTECA

A quiet corner tucked away downstairs in the main restaurant, and just off the bar area.

**Capacity**

20 seated | 30 standing

### THE BAR

Offers guests a large space for standing drinks receptions.

**Capacity**

50 standing

### THE SMALL MEZZANINE

A tranquil space above the main restaurant with low ceilings and a cosy atmosphere.

**Capacity**

30 seated | 30 standing

### THE LARGE MEZZANINE

Housed above the main restaurant at the back of the building and is perfect for guests looking for their own area but still want to absorb the atmosphere of the bar.

**Capacity**

50 seated | 60 standing

---

## EXCLUSIVE HIRE

**Capacity**

110 seated | 170 standing

### CLICK HERE FOR MORE INFO

EMAIL: [events@ibericarestaurants.com](mailto:events@ibericarestaurants.com)

12 Cabot Square, Canary Wharf,  
London E14 4QQ



# IBÉRICA LA TERRAZA

Located in a leafy corner of Cabot Square, Ibérica La Terraza brings the bustling atmosphere of Madrid to Canary Wharf. The outside dining space, La Terraza is a new concept that resonates the Spanish terrace culture and is open seasonally from brunch through to evening with a selection of tapas and pinchos.

---

## SEMI-PRIVATE AREAS

### BAR

#### Capacity

20 standing

### LEFT/RIGHT OF TERRACE

#### Capacity

50 seated | 60 standing

---

## EXCLUSIVE HIRE -TERRACE

### Capacity

100 seated | 120 standing



**CLICK HERE FOR MORE INFO**

**EMAIL:** [events@ibericarestaurants.com](mailto:events@ibericarestaurants.com)

**12 Cabot Square, Canary Wharf,  
London E14 4QQ**

# MALLOW

100% plant-based restaurant in the heart of Wood Wharf, Mallow serve seasonal, sustainable food, inspired by cuisines from all over the world.

The first floor is available for private hire, with movable seating to assist in creating a flexible and memorable gathering. The hire of the room includes a dedicated waiting team, making these private spaces perfect for intimate gatherings, special occasions and celebrations.

---

## EXCLUSIVE HIRE

### Capacity

50 seated | Standing capacity available upon request



**CLICK HERE FOR MORE INFO**  
**EMAIL:** [events@mallowlondon.com](mailto:events@mallowlondon.com)

**12 Park Drive, Canary Wharf,  
London E14 9ZW**

# NO35 MACKENZIE WALK

No 35 Mackenzie Walk is a lively bar & restaurant known for seasonal cocktails and sustainably sourced menus. No 35 is the perfect spot for large scale breakfast or brunch events, seated three course dining or drinks receptions with DJ and substantial canapes or finger food. With a dedicated events team on hand to help organise your event, they have tried and tested menus and packages to suit all occasions. The large bar and extensive south-facing waterside terrace makes it a perfect summer party destination.

## PRIVATE DINING

**Capacity**  
30 seated

## SEMI EXCLUSIVE HIRE

**Capacity**  
24-50 seated | 150 standing

## EXCLUSIVE HIRE

**Capacity**  
90 seated | 300 standing



**CLICK HERE FOR MORE INFO**

**EMAIL:** [reservations@no35mackenziewalk.co.uk](mailto:reservations@no35mackenziewalk.co.uk)

**29-35 Mackenzie Walk, Canary Wharf,  
London E14 4PH**

# PATTY&BUN

Located in the heart of Wood Wharf, Patty&Bun is your one stop shop for an epic team lunch, boozy bash or even full venue hire for something more bespoke. The team can tailor menus and packages to help your event run with ease and keep your guests happy. Expect great burgers, great service and great vibes!

## SEMI-PRIVATE DINING

**Capacity**  
25 Banquet Seating

## EXCLUSIVE HIRE

**Capacity**  
60 seated | 105 standing | 40 terrace



**CLICK HERE FOR MORE INFO**  
**EMAIL:** [canarywharf@pattyandbun.co.uk](mailto:canarywharf@pattyandbun.co.uk)

15 Park Drive, Wood Wharf,  
London E14 9GG

# PEDLER

Book Pedler for excellent catering that celebrates produce across the British Isles, curating a very seasonal, ever-changing menu.

Situated within the One Canada Square building, there are multiple spaces for all occasions, from the restaurant area for breakfast, lunch and dinner, to our bar with fresh beer in copper tanks and delicious cocktails; The Library for meetings or hot-desking, or our mezzanine level with Cartel's Cocktail & Champagne Bar for something more intimate and finally SuperNatural with it's fresh juices and coffee by day and low intervention wines by night.

---

## PRIVATE DINING

### CARTELS COCKTAIL & CHAMPAGNE BAR

The upper level

#### Capacity

20 seated | 30 standing

---

## EXCLUSIVE HIRE

#### Capacity

120 standing

[CLICK HERE FOR MORE INFO](#)

EMAIL: [hello@pedlercanarywharf.com](mailto:hello@pedlercanarywharf.com)

Street Level 0, One Canada Square, Canary Wharf,  
London E14 5AB



# PERGOLA ON THE WHARF

Pergola On The Wharf is a botanical waterside Eden, grown for naturally good times. Flooded with natural light from the floor to ceiling windows, strewn with vines and ferns, the indoor space is home to two bars, a beautiful open kitchen and a private dining room.

---

## PRIVATE DINING

When privacy is preferred, look no further than the Private Dining Room at Pergola On the Wharf.

**Capacity**

12 seated | 20 standing

---

## EXCLUSIVE HIRE

Perfectly suited to host any event; from the whole office party to intimate private dinners. Two substantial bars and a beautiful open kitchen form the centrepiece of the venue.

**Capacity**

700 standing | 200 terrace

**CLICK HERE FOR MORE INFO**

**EMAIL:** [events@incipio-group.co.uk](mailto:events@incipio-group.co.uk)

**Crossrail Place, Canary Wharf,  
London E14 5AR**





# ROE

Surrounded by a unique interior décor, enjoy waterside views across Wood Wharf whilst indulging in a spread of culinary delights. Roe celebrates the ethical bounty of the land and sea, bringing non-target fish, carefully managed game and regenerative crops to the forefront.

---

## PRIVATE DINING

### THE GARDEN ROOM

Capacity  
26 seated

---

## EXCLUSIVE HIRE

Capacity  
250 standing



[CLICK HERE FOR MORE INFO](#)

EMAIL: [reservations@roerestaurant.co.uk](mailto:reservations@roerestaurant.co.uk)

5 Park Drive, Wood Wharf,  
London, E14 9GG

# ROKA

Overlooking Canada Square Park, the lounge offers plenty of natural light and an impressive view, which make it the ideal space for your group event.

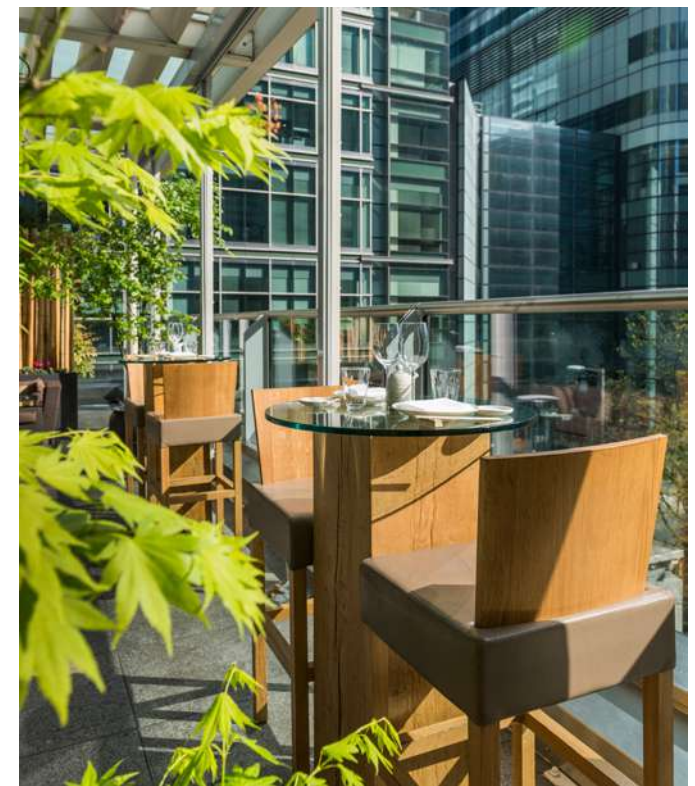
## GROUP DINING

### THE LOUNGE

Capacity  
18 seated

### THE TERRACE

Capacity  
30 seated | 80 standing



[CLICK HERE FOR MORE INFO](#)

EMAIL: [infocanarywharf@rokarestaurant.com](mailto:infocanarywharf@rokarestaurant.com)

Upper Level 1, The Park Pavilion, Canary Wharf  
London E14 5FW

# THE ALCHEMIST

The Alchemist Canary Wharf is a creative cocktail bar and restaurant with theatre and immersive experiences at its core. Cocktails include serves that change colour, smoke and even levitate! The food menu takes influence from South East Asia and the Americas with playful versions of much loved dishes. The vibrant location has live DJ's throughout the weekend, playing disco house, classic house and soulful tracks.

This epicentre of style and wonder can be found in Reuter's Plaza over two floors with a secluded terrace. A perfect place to watch the busy world pass by.

---

## SEMI-PRIVATE HIRE

### RESTAURANT

Capacity  
86 seated

### DOWNSTAIRS OUTDOOR TERRACE

Capacity  
80 seated

### UPSTAIRS TERRACE

Capacity  
75 standing

### DOWNSTAIRS BAR

Capacity  
50 standing

---

## EXCLUSIVE HIRE

Capacity  
300 standing

### CLICK HERE FOR MORE INFO

EMAIL: [reservations@thealchemistbars.com](mailto:reservations@thealchemistbars.com)

Reuters Plaza, Canary Wharf,  
London, E14 5AJ



# THE BOATHOUSE

Inspired by intimate speakeasies and chic Parisian jazz clubs, The Boathouse boasts modern facilities, stylish décor, and a large rooftop area with ample seating. There is a bar on board, perfect for hosting parties, events, celebrations and corporate functions.

---

## EXCLUSIVE HIRE

### Capacity

200 standing & 25 seated  
(rooftop seating, weather permitting)



[CLICK HERE FOR MORE INFO](#)

EMAIL: [bookings@boathouselondon.co.uk](mailto:bookings@boathouselondon.co.uk)

Boardwalk, Wood Wharf,  
London E14 9SF

# THE COCKTAIL CLUB

The Cocktail Club Canary Wharf benefits from a large, open plan space with eclectic interiors and a large outdoor terrace. The mixture of standing and seated areas makes it ideal for larger corporate events, as well as networking and launch parties. Their long-stretching bar is home to spirits, wines and premium bottles alike, and a large range of signature and classic cocktails. Have Champagne roaming on trays for your guests' arrival and why not surprise them with a couple of immersive circus acts.

---

## EXCLUSIVE HIRE

### Capacity

200 standing – including terrace



**CLICK HERE FOR MORE INFO**  
**EMAIL:** [info@thecocktailclub.com](mailto:info@thecocktailclub.com)

**Cabot Square, Canary Wharf,  
London E14**

# THE CUBE

Combining intense physical and mental skill-based games, THE CUBE at Canary Wharf pushes the boundaries of immersive gaming. Based on the BAFTA-award winning TV gameshow, players must master their balance, speed and judgement skills across seven challenges, working with their teammates in single and multi-player games.

Do you have what it takes to beat THE CUBE?

The venue features 21 iconic CUBES, six mixologist led bars serving an expansive list of premium drinks, high quality burgers and sharing platters from THE BUTCHER and the UK's first Toni Loco Pizzeria. Live DJ sessions also available on request.

---

## PRIVATE ROOMS/AREAS

### VIP BAR

3 CUBES | 20 players | Private bar and catering | Private toilet facilities

**Capacity**  
48

### PERSPECTIVE BAR

7 CUBES | 48 players | Private bar and catering

**Capacity**  
58

### SUMMIT BAR

Private bar and catering | Projector | Perfect for conferences

**Capacity**  
34 seated

### REPLAY BAR

Private bar and catering | Projector

**Capacity**  
32 seated

---

## EXCLUSIVE HIRE

**Capacity**  
440

**CLICK HERE FOR MORE INFO**

Email: [groupbookings@bookthecube.com](mailto:groupbookings@bookthecube.com)

14 Charter Street, Canary Wharf,  
London E14 5GAJ



# THE IVY IN THE PARK

Proudly showcasing the finest British cuisine, The Ivy In The Park is nestled in the heart of Canary Wharf and offers a beautiful dining experience perfect for any occasion. As well as the main dining area and bar, it hosts two outdoor terraces and provides professionals, residents, and visitors alike a sophisticated all-day dining haven, 7 days a week.

## PRIVATE DINING

Explore their two private dining spaces that cater to a variety of different events. Guests can enjoy bespoke sharing menus available from breakfast through to dinner, as well as canapés and a selection of wines and cocktails.

### THE BUTTERFLY ROOM

The Butterfly private dining room is complete with its very own secluded outdoor area. Showcasing a striking private bar that creates a glamorous backdrop whatever the occasion, it is the perfect setting to host corporate events, business meetings and private parties.

#### Capacity

30 seated | 30 standing

### THE TERRACE

A hidden oasis in the middle of the bustling Canary Wharf, the terrace is the perfect hideaway to host a special event or celebration, making an unforgettable impression. The space is equipped with large umbrellas along with additional seating and a private bar, available upon request.

#### Capacity

60 standing

## EXCLUSIVE HIRE

### FIRST FLOOR

#### Capacity

50 seated

## ENTIRE VENUE UPON REQUEST

### CLICK HERE FOR MORE INFO

EMAIL: [events@theivy-collection.com](mailto:events@theivy-collection.com)

50 Canada Square, Canary Wharf,  
London E14 5FW



# THE PARLOUR

Located in the Park Pavillion on Canada Square Park, this venue is just moments away from the Jubilee Line station. The Parlour is a gorgeous bar and restaurant perfect for both day-time and evening events.

---

## THE COCKTAIL LOUNGE

A secret-garden inspired cocktail lounge Ideal for standing receptions, drinks, and canapés.

**Capacity**

38 seated | 125 standing

---

## MAIN BAR AND DINING AREA

Ideal for large events such as celebrations & corporate events.

**Capacity**

75 seated | 250 standing

---

## THE TERRACE

A large Alfresco terrace with its own bar in Park Pavilion, Canada Square.

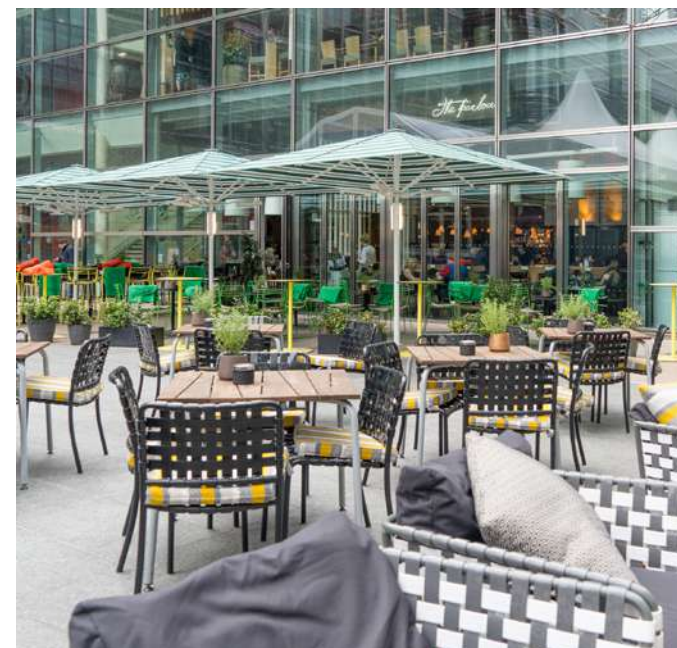
**Capacity**

100 seated | 300 standing

**CLICK HERE FOR MORE INFO**

**EMAIL:** [info@theparlourbar.co.uk](mailto:info@theparlourbar.co.uk)

**The Park Pavilion, Canada Square,  
London E14 5FW**





# THE PELLIGON

Timeless design meets state-of-the-art engineering at The Pelligon, with exclusive use for up to 1,000 guests. Designed by renowned architect Cesar Pelli as the sister to New York's Winter Garden, The Pelligon blends art deco elements with futuristic flair for a see-through look that stands out. Soaring ceilings and floor-to-sky glass frontage arc into an eye-catching 27-metre glass dome that invites natural light into a space to shape as you please. The venue further benefits from a mezzanine level, a private breakout room, a waterside terrace and impeccable built-in facilities.

---

## EXCLUSIVE HIRE

**Capacity**  
1,000



**CLICK HERE FOR MORE INFO**  
**EMAIL:**[hello@thepelligon.com](mailto:hello@thepelligon.com)

**43 Bank Street, Canary Wharf,  
London E14 5NX**

# WAHACA

Wahaca brings the vibrant energy of Mexico into the heart of Canary Wharf. Available spaces include a bookable private Terrace Bar overlooking the scenic Canada Square Park alongside the main restaurant. Choose from the event-friendly canapés and drinks menu or dishes from the main menu. Choose from the flexible spaces to welcome small and large groups.

---

## PRIVATE DINING

Exclusive Terrace Bar space tucked away, with an elevated position above Canada Square Park.

### Capacity

40 seated | 125 standing

---

## EXCLUSIVE HIRE

The entire venue can be hired on an exclusive basis for any given occasion



[CLICK HERE FOR MORE INFO](#)

EMAIL: [canarywharf@wahaca.co.uk](mailto:canarywharf@wahaca.co.uk)

Upper Level 1, The Park Pavilion, Canary Wharf,  
London E14 5FW

# TRIBE HOTEL

And if you are looking for somewhere to stay...

## ROOM TO UNWIND

TRIBE London Canary Wharf has 312 rooms set across six floors. Each room benefits from natural daylight, floor to ceiling windows, king-size beds, complimentary high-speed WIFI, stylish yet functional interiors with desks, and well-equipped bathrooms with rainfall showers.

## WORK. PLAY. EAT. MEET

The ground floor at TRIBE London Canary Wharf is home to the hotel's free-flowing, 24-hour 'Social Hub' with spaces to suit everyone, whether guests are there to work, play, eat or meet. Flooded with natural light and opening up onto the hotel's sun-soaked terrace, it's open not only to those staying at the hotel, but inclusive to all.

## DRINKING & DINING – 24/7

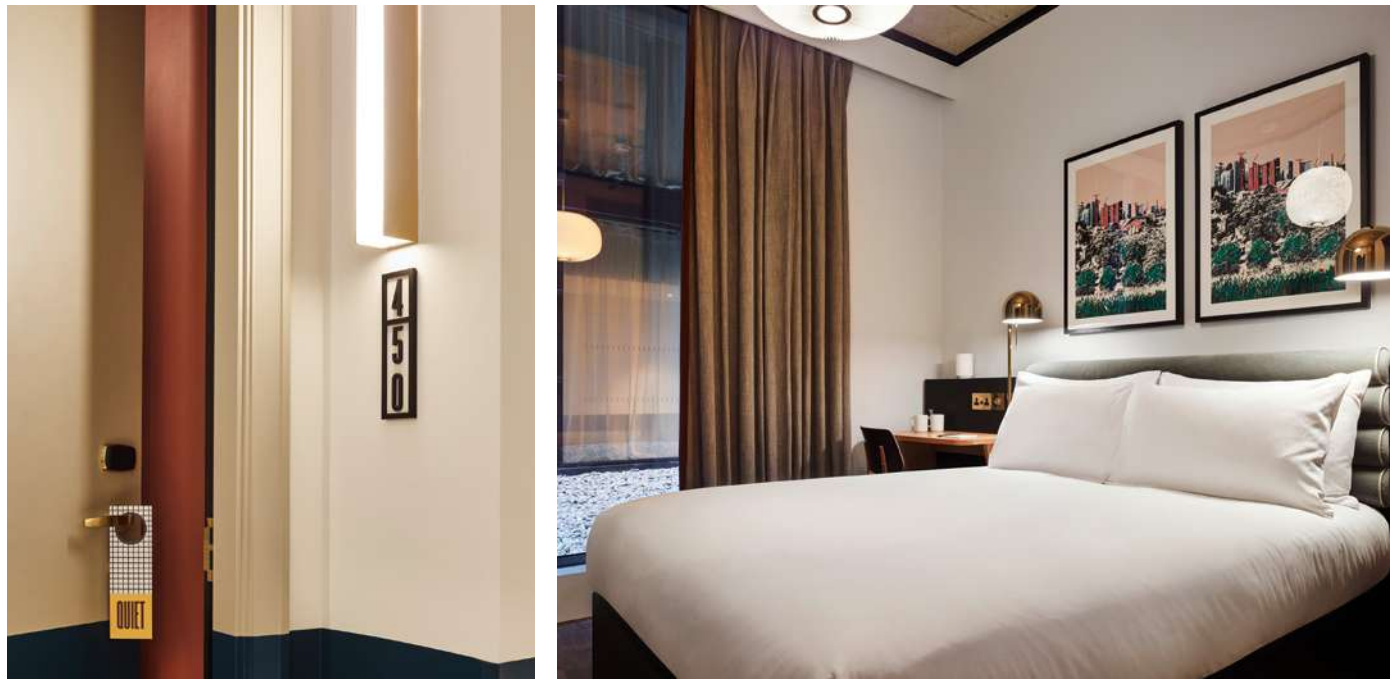
When on the go, TRIBE's 24-hour **Grab & Go** counter offers everything to satisfy modern travellers' needs. For a relaxed sit-down affair, inspired by the sunny climes of California, Feels Like June is the hotel's 200-cover all-day dining destination.



**CLICK HERE FOR MORE INFO**

**EMAIL:** [reservations.canarywharf@mytribehotel.com](mailto:reservations.canarywharf@mytribehotel.com)

**15 Water Street, Wood Wharf,  
London E14 9QG**



**FOR MORE INFORMATION PLEASE CONTACT  
RETAIL.PROMOTIONS@CANARYWHARF.COM**

**canarywharf.com**

**@ | TikTok canarywharflondon**