

# ART AT YOUNG

Welcome to Canary Wharf!  
My name is Old Flo and I'm  
here to guide you round our  
wonderful works of art.

I am just one of over  
100 artworks you will find here,  
but I have picked a few of my  
favourites for you to discover.  
Let's see if you can find them  
all and complete my testing  
tasks along the way.

## 1 Draped Seated Woman or 'Old Flo' (1957-1958) by Henry Moore

I was created from bronze in the 1950s by one of Britain's greatest artists, Henry Moore. I've been on quite a journey before arriving at my home in Canary Wharf. I used to live in Stepney's Stifford Estate in Tower Hamlets, the East End of London but in 1997 the estate was demolished so I moved to Yorkshire Sculpture Park for safekeeping. In 2015 the Mayor of Tower Hamlets promised to bring me back to the borough and Canary Wharf Group offered me a new home in Cabot Square. I like my new home as there is always so much happening in Canary Wharf and I get to meet so many people.

**LOOK** What do you think I am looking at today?



**2 Shine Your Colours**  
(2021) by Tine Bech


This installation was created for our Summer Lights festival in 2021. The artist wanted to encourage visitors to see themselves and the world through different colours. If you are lucky enough to visit on a sunny day you might see the bright colours reflecting on the ground.



**LOOK** Choose one of the coloured panes of glass and look out to the city, what colour is the Gherkin?

**3 Columbus Screen**  
(2000) by Wendy Ramshaw


Wendy is best known as a jewellery designer so this piece that measures 15m by 2m is certainly larger than her normal work! This work is inspired by the famous explorer Christopher Columbus and the maps he might have used in his explorations.



**LOOK** Step onto the plinth and look through the lens, what can you see?

**6 Captivated by Colour**  
(2020) by Camille Walala

Created for the first London Mural Festival in 2020, local artist Camille Walala has designed colourful geometric shapes, playing with the long perspective of the tunnel. As you walk through the bridge you will see the patterns and colours change.



**COUNT** Walk or run the length of this tunnel, how many steps does it take you?

**“Painting and sculpture help other people to see what a wonderful world we live in”**<sup>1</sup>

Henry Moore

**7 Lightbenches**  
(2011) by LBO Lichtbank

Here is another example of an artwork that also doubles as a seat. These amazing, illuminated benches come all the way from Germany. Originally launched for the Festival of Lights in Berlin in 2011 and then shown as part of our own Winter Lights festival in 2015. Watch the benches closely and you will see them gradually change colour.

**SELFIE SPOT** Take a seat and see if you can get a snap with your favourite colour




**Map key**

- Work of art
- Toilets & Babychange
- Pier
- Jubilee Line
- Elizabeth Line
- Docklands Light Railway

**More to see!**

These 12 artworks are just a selection of over 100 artworks permanently displayed at Canary Wharf.

We also have temporary exhibitions throughout the year in the Lobby of One Canada Square and throughout the Estate.


Visit the What's On pages at [canarywharf.com](http://canarywharf.com) to find out more.

**“To be an artist is to believe in life”**<sup>2</sup>

Henry Moore

**4 Couple on Seat**  
(1984) by Lynn Chadwick


Lynn Chadwick is famous for producing artworks with figures. This piece shows two striking figures sitting on a bench. Look closely and you will see their heads are quite unusual shapes!



**COUNT** Including the couple sitting on the seat, how many different shapes can you see on Cabot Square?

**5 Skystation**  
(2005) by Peter Newman


Skystation is an interactive artwork which is both an artwork and a seat. The work invites you to sit down, relax and gaze up at the sky to look at the world from a different angle.



**COUNT** Lie down on Skystation and look up, how many floors do you think there are in the big pointy building (One Canada Square) ?

**8 Tear**  
(2017) by Richard Hudson

This artwork is made from mirrored steel and looks like a giant tear drop. The artist has been inspired by nature to make this artwork. If you walk round the artwork you will be able to see lots of things reflected on the surface – including you!



**LOOK** Can you find the Tube station sign upside down?

**9 Wharf Walk**  
(2013) by Emma Biggs

This artwork is a mosaic, this means the artwork has been made using small pieces of coloured stone and glass to create the patterns. The artist chose the designs to depict some of the trades that passed through the original dockyards that flourished here in earlier times.

You will find this artwork on level -2 of Jubilee Place Mall. Accessible by lifts or escalators.



**COUNT** How many different animals can you see in this mosaic?

10

## ScibbleForm

(2020) by  
Julian Wild

This sculpture is based on a flamboyant doodle which appears to have leapt off the page and is now a giant red sculpture.

Look at the artwork and you will see a simple line, weaving and tangling into a complex form that seems to defy gravity.



**COUNT** How many corners can you count on ScibbleForm?

11

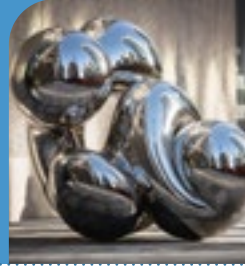
## The Knot

(2017) by Richard Hudson

This is another shiny, mirrored work by Richard Hudson, inspired by nature. The infinite curves in the sculpture create a contrast between that of the rectangular buildings surrounding it.

### SELFIE SPOT

Get up close to The Knot and see if who can pull your funniest face in the reflection.



12

## Minotaur and Hare on Bench

(1995) on Bench  
by Sophie Ryder

Sophie is well known for her sculpture of animals and mystical creatures.

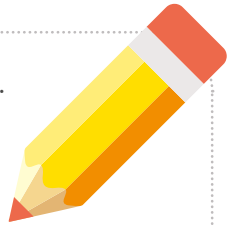
The hare is an animal you might find in the English countryside whereas the Minotaur can be found in Greek Mythology.



**LOOK** Beside the Minotaur and Hare there is another smaller bench, can you find the item someone has left behind?

## Now it's your turn!

Well done, you have discovered all my favourite artworks. Now it's your turn to create your own masterpiece!



# DRAW

### There's more!

Want to find out more about the Old Flo education programme or events linked to Old Flo? Simply register as a Friend of Old Flo, by sending an email to [oldflo@canarywharf.com](mailto:oldflo@canarywharf.com)

Photographs of Henry Moore Draped Seated Woman © Henry Moore Foundation. Other photographs, courtesy of Canary Wharf Group.

<sup>1</sup> Henry Moore from Artist's Dialogue: A Conversation with Henry Moore by Catriona Tudor Erler in Architectural Digest (May 1984)

<sup>2</sup> The Observer, 24 November, 1957. For further information about public art in Canary Wharf, contact: [public.art@canarywharf.com](mailto:public.art@canarywharf.com)

Public Art, Canary Wharf Group, One Canada Square, Canary Wharf, London E14 5AB Telephone 020 7418 2000

[canarywharf.com](http://canarywharf.com) [@canarywharflondon](https://www.instagram.com/canarywharflondon) [yourcanarywharf](https://www.twitter.com/yourcanarywharf)