



DISCOVER CANARY WHARF

🐦 yourcanarywharf
@canarywharflondon

ALL THE SPACE YOU NEED TO MEET, RELAX AND RECONNECT

15-Minute City

Explore over 300 shops, cafés, restaurants and services, as well as acres of parks and gardens, all within easy walking distance

Dining Al Fresco

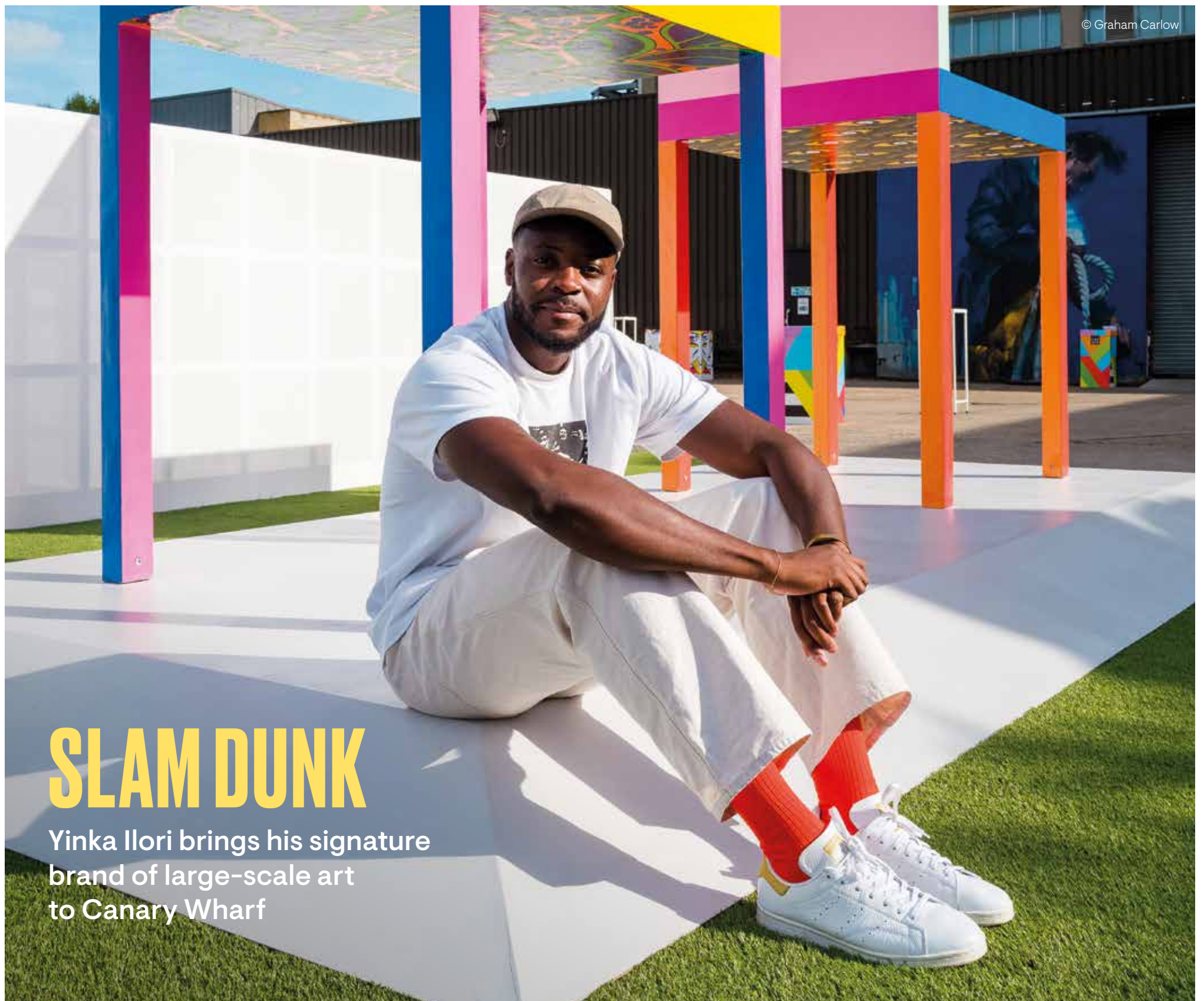
Discover flavours from around the world at more than 40 open-air restaurants, bars and cafés

Fun & Games

From ping pong and paddle boarding, to basketball and GoBoat, make the most of the urban outdoors this summer

Where the Art Is

Rooftop exhibitions, outdoor theatre and a Summer Lights spectacular – your what's on guide to culture in Canary Wharf



© Graham Carlow

SLAM DUNK

Yinka Ilori brings his signature brand of large-scale art to Canary Wharf



CANARY WHARF

- ASICS

Bar Bolivar

Barker Shoes

Barry's

Bobbi Brown

Calvin Klein Underwear

Charles Tyrwhitt

Crosstown

David Clulow Opticians

Electric Shuffle

Freedom Clinics

Garbanzos

Hackett
- Hawes & Curtis

Humble Grape

Ibérica Canary Wharf

Krispy Kreme

The Kooples

Le Chalet Cryo

L.K.Bennett

Lola's Cupcakes

London Grace

Maje

NipNip

No35 Mackenzie Walk

Notes Coffee Roasters & Bar

- Obicà Mozzarella Bar
- Rituals...
- Scribbler
- Sweat by BXR
- Sweaty Betty
- Space NK
- Ted's Grooming Room
- Third Space
- Toni&Guy
- Vision Express
- Wanyoo
- YiFang

Scan the QR code to view discounts and redeem exclusive offers available at these stores and more



canarywharf.com/exclusive-offers

WELCOME NOTE

The countdown is over. Now that we can finally start planning our summer social calendars, and reacquainting with family and friends, Canary Wharf is delighted to invite you to a safe and exciting place to get together and reconnect.

So, what's new and what's coming up on the Estate? More than 40 of our restaurants have reopened with outdoor seating, providing new spaces to enjoy open-air dining; brand new restaurant Pergola On The Wharf will be opening on the rooftop of Crossrail Place; while MMy Wood Wharf is set to bring a vibrant food and drink market to the Estate's new neighbourhood, Wood Wharf.

Find your new-season look at high-end fashion labels such as Maje, Sandro Paris and The Kooples, or search for something slightly more casual at high street favourites COS, Mango and Zara.

If you're looking to get active, test your putting skills on our nine-hole minigolf course, or practise ping pong on tables designed by renowned illustrator Kelly Anna. Basketball lovers should look out for a court designed by large-scale artist Yinka Ilori, and you'll soon be able to discover Canary Wharf from the water courtesy of self-drive boating experience GoBoat.

Enjoy open-air movie nights, outdoor music concerts, an interactive family festival and a lighting spectacular. There's the colourful outdoor exhibition, *Crossorelle*, currently running at Crossrail Place Roof Garden, and the forthcoming *Sun Pavilion* by spatial artist Morag Myerscough.

To help you make the most of your time at Canary Wharf, please scan the QR code on the opposite page to discover a variety of exclusive discounts and promotions in a selection of our shops, gyms, cafés, bars and restaurants.

Canary Wharf is delighted to welcome you back.

At weekends and Bank Holidays you can enjoy 3 hours' free parking in any of our public car parks when you spend £10 at any of our shops, cafés, bars or restaurants. Simply ask for your ticket to be validated at the point of purchase.

All information and offers are correct at the time of going to press. Due to changing circumstances, details are subject to change. Please check individual websites for the latest details. Computer generated images are indicative only.



4 15-Minute City

Canary Wharf is a vibrant place to live, work, explore and enjoy, where everything is within easy walking distance



6 Dining Al Fresco

Make the most of summer at Canary Wharf's best outdoor drinking and dining spots

10 Hot Plates

The street food-inspired vendors serving flavours from around the world



12 What's New & Coming Soon

From rooftop terraces to exciting international cuisine, what to look forward to in the coming weeks



14 The Heat Is On

New season womenswear to help inspire your feel-good wardrobe

16 Men's Style

The latest looks from the likes of BOSS, GANT, Polo Ralph Lauren and Reiss



18 Brand New You

Restart your beauty regime after a year in lockdown

20 Back on Track

The outdoor exercise classes and gym-based workouts to help you achieve your fitness goals

22 Fun & Games

Ping pong, paddle boarding, basketball and minigolf – welcome to a summer of sport

24 Cultural Fix

Open-air culture hits, from Shakespeare outdoors to live lunchtime performances



26 Where the Art Is

Sun pavilions, outdoor exhibitions and a Summer Lights festival come to Canary Wharf

28 Green Planet

Setting a new benchmark in sustainable living

30 Where Home Means More

A quintet of new residential buildings invites you to live on the Estate for the very first time





Above and below: Crossrail Place Roof Garden

The pandemic acted as a timely reminder that, in shrinking our world down to our nearby surroundings, we open up our lives to so much more; expanding our friendship groups, making exercise easier to fit in, and doing our bit to help the planet by cutting down on travel and shopping and socialising closer to home.

This localisation reflects a concept developed by Professor Carlos Moreno at the Sorbonne University in Paris long before the pandemic arrived. The idea of a ‘15-minute city’, seen as a response to both the environmental crisis and ever-increasing urban expansion, is based on research into how urbanites’ use of time could be reorganised.

Moreno believes that life should be localised, and it should take no more than 15 minutes to get to all ‘daily urban necessities’ by foot or bike. The aim? To improve quality of life and reduce travel as much as possible between home, work, shops, entertainment venues, schools and healthcare. In addition, spaces should be used for multiple purposes, such as a school being used for other activities at the weekend.

This idea has had life breathed into it in London by the pandemic, which, for many of us, shifted our priorities irreversibly. In an independent survey by Atomik Research, commissioned by Canary Wharf Group, 43 per cent of people said that proximity to shops, cafés and green spaces, along with the ability to visit family and friends, were now the most important aspects to consider when moving home.

Canary Wharf is a city-within-a-city, where visitors can explore more than 300 shops, cafés, bars, restaurants and services, acres of green spaces and an award-winning arts and events programme, all within easy walking distance



Above: Fisherman's Walk with Crossrail Place in the background

Below from left: Richard Hudson's Tear sculpture; Canary Wharf's new neighbourhood, Wood Wharf

THE SHOPS

Wellbeing, connection and convenience, central to the idea of the 15-minute city, have been designed into the very foundations of Canary Wharf. As well as more than 20 acres of outdoor space, the Estate now boasts more than 300 shops, cafés, bars, restaurants, health facilities and wellness services – all within easy walking distance of each other.

Studies published in scientific journal *Global Environmental Change* show the importance of water for wellbeing and how being near a body of water can reduce stress and encourage people to be active. For this reason, water features and fountains are core elements of the Canary Wharf estate.

Alongside the therapeutic properties of water, a study by the *International Journal of Environmental Health Research* noted that spending just 20 minutes in a park or open outdoor space is one of the best ways to improve wellbeing. From the exotic plants in Crossrail Place Roof Garden to the tree-lined Jubilee Park, there are acres of landscaped gardens and squares to wander through in Canary Wharf. Discover the many benefits of being outdoors for yourself by exploring our Estate this summer.

“Spending just 20 minutes in a park or open outdoor space is one of the best ways to improve wellbeing”



THE STREETS

There are numerous restaurants and venues at street level, positioned to make the most of outside seating and waterside views. These eateries include The Alchemist, Café Brera Terrace, Humble Grape, Ibérica La Terraza, Obicà Mozzarella Bar and Sticks'n'Sushi.

“The Estate’s open spaces have been created to be welcoming and provide a sense of serenity”



THE SPACES

The Estate’s open spaces are special. They have been created to be welcoming and provide a sense of serenity and wellbeing. Canary Wharf invites you to explore more than 20 acres of landscaped parks, gardens and squares, and to discover more than 800 trees and 70,000 seasonal plants.

15-MINUTE CITY

DINING AL FRESCO



Enjoy your favourite food while soaking up the sun this summer at Canary Wharf's exciting new pop-up restaurant terraces and outdoor bars



BEST FOR BRUNCH

Kick start your weekend with No35 Mackenzie Walk's bottomless brunch menu, which includes dishes such as banana and ricotta pancakes and eggs Florentine along with your choice of free-flowing prosecco, mimosas or mojitos. At Rocket in Churchill Place, diners can enjoy two hours of bottomless drinks alongside their breakfast, including Aperol spritz, bellinis and beer. The clue's in the name at Crossrail Place's The Breakfast Club, an 80s-inspired restaurant serving stacks of pancakes, full English breakfasts and bacon butties.



BEST FOR FINE DINING

Located on the grass of Canada Square Park, The Ivy in the Park has a verdant outdoor dining area that makes for an idyllic setting in which to experience the restaurant's signature chicken Milanese, steak tartare and shepherd's pie. Ask for a view of the Summer Screens to experience dinner with a show. Nearby, Plateau has some of the best views on the Estate, thanks to its location overlooking the park. After an aperitif from the bar's extensive cocktail menu, tuck into Dover sole, confit duck leg or fillet of sea bream. Over in Cabot Place, Boisdale of Canary Wharf's terrace is the destination for Scottish-inspired dishes. The menu includes Scottish salmon, steak and haggis, along with a cigar library and a large selection of whisky.



BEST FOR PIZZA

Naples-inspired Franco Manca in Crossrail Place has changed London's pizza scene for the better with its moreish sourdough bases. Start with nibbles of Nocellara green olives and garlic bread before tucking into tangy tomato pizzas topped with cured chorizo, Cantabrian anchovies or wild broccoli. In Cabot Square, Electric Shuffle has brought its giant sharing pizzas and cocktails outside. Gather your friends and sip frozen concoctions while savouring spicy 'nduja and wild mushroom pizzas. Don't miss the truffle cheese and sweet potato sharing fries.

BEST FOR BEER & WINE

Wine fans should make a beeline for Humble Grape on Mackenzie Walk, where the drinks list is extensive, and the sommeliers really know their stuff. In Cabot Square, Nicolas Wine Bar has opened a pop-up venue, serving house favourites by the glass. Fancy a pint instead? BrewDog Canary Wharf is serving craft beers overlooking Bellmouth Passage, while The Henry Addington on Mackenzie Walk has views across the dock. If you're passing through Canada Square Park, grab a drink at The Grandstand Bar, where rainbow picnic benches are set up on the grass.



BEST FOR ICE CREAM

Should you be feeling peckish as you wind your way through Jubilee Park admiring OBE holder Helaine Blumenfeld's *Fortuna* sculpture or listening to the trickle of the resident water feature, make a pit stop at Crosstown Ice Cream. Its silky smooth gelato is made in small batches from the finest ingredients. Signature scoops include traditional flavours of vanilla, strawberry and chocolate, as well as the more adventurous pistachio, roasted banana or cookie dough – a refreshing treat on a summer's day.



OUTSIDE EATING

THE ALCHEMIST
Reuters Plaza
020 3794 0595

BAR BOLIVAR
Reuters Plaza
barbolivar.co.uk

BIG EASY
Crossrail Place
020 4580 1172

BOISDALE OF CANARY WHARF
Cabot Place
020 7715 5818

THE BREAKFAST CLUB
Crossrail Place
020 7871 9986

BREWDOG CANARY WHARF
Churchill Place
020 7513 2417

CAFÉ BRERA
Cabot Place
020 3828 0651

CAFÉ BRERA COFFEE CART
Jubilee Park
cafebrera.com

CAFÉ BRERA TERRACE
Cabot Square
cafebrera.com

CHAI KI
Crossrail Place
020 7516 0444

CROSSTOWN ICE CREAM
Jubilee Park
crosstown.co.uk

ELECTRIC SHUFFLE
Cabot Square
020 8059 4163



Café Brera

BEST FOR COFFEE

Artisan producer Caravan Coffee Roasters is behind the beans at 640East, where coffee is served in the Montgomery Square bar alongside pastries, beer and cocktails. In Jubilee Place, you'll find the Café Brera Coffee Cart, where a mix of two distinct blends informs its menu of hot drinks. For those after a sugar hit, Ole & Steen in Crossrail Place has an excellent selection of Danish pastries. Go for the coffee and stay for the cinnamon socials, or 'kanelstang' in Danish.

The Alchemist



BEST FOR COCKTAILS

Creative cocktails can be found at Reuters Plaza, where The Alchemist's bartenders whip up theatrical colour-changing cocktails and bubbling spritzes. If rum's your drink, head to the Cuban-inspired Bar Bolivar for mojitos and daiquiris. The Parlour in The Park Pavilion has an extensive range of cocktails, including an excellent espresso martini. Coming soon to Crossrail Place, Pergola on the Wharf will serve drinks with a view on its heated wraparound terrace.

BEST FOR BURGERS

Shake Shack started life as a hot dog stand in New York's Madison Square Park, but today it's for burgers that the joint is better known. Enjoy the restaurant's signature cheeseburgers and crinkle chips on The Park Pavilion. You'll find a variety of pub classics on the menu at The Henry Addington in Mackenzie Walk, but it's the burger that truly stands out. Opt for the classic cheese, chicken or a vegan plant-based option.



The Henry Addington



Shake Shack



Boisdale of Canary Wharf

BEST FOR STEAK

Ahead of the opening of its new restaurant in Newfoundland, M Restaurants has unveiled a pop-up terrace in Bank Street Park, where you can enjoy its signature ribeye, rump and sirloin steaks. For steak with a side of whisky, head to Boisdale of Canary Wharf in Cabot Square, while Big Easy in Crossrail Place is the destination for surf and turf, thanks to its menu of steaks and lobster rolls. Gaucho's Westferry Circus restaurant, meanwhile, has spectacular riverside views and nine different cuts of steak from which to choose.



Iberica La Terraza

BEST FOR MEDITERRANEAN



Obicà Mozzarella Bar

Be transported to the Spanish coast with every bite at Ibérica La Terraza in Cabot Square, where tapas and paella are on the menu. If it's flavours of Italy you're craving, pull up a chair at neighbouring Café Brera for handmade pizzas, pasta and cicchetti. At Obicà Mozzarella Bar in West Wintergarden, the creamy cheese informs the menu of pizzas, salads and sharing boards.



ROKA

BEST FOR SUSHI



Sticks'n'Sushi

ROKA in The Park Pavilion has spectacular views across the Estate. Book a table on its terrace to soak up the scenery while enjoying crispy prawn and soft-shell crab maki rolls, salmon, tuna and yellowtail sashimi or hot dishes from its signature robata grill. Sticks'n'Sushi in Crossrail Place offers a menu of sushi and yakitori sticks inspired by its founders' Danish and Japanese heritages. Opt for one of the sharing boards to sample a mix of dishes.

OUTSIDE EATING

FRANCO MANCA
Crossrail Place
020 3026 8748

GAUCHO
Westferry Circus
020 7987 9494

THE GRANDSTAND BAR
Canada Square Park
grandstandbar.co.uk

THE HENRY ADDINGTON
Mackenzie Walk
020 7719 1114

HUMBLE GRAPE
Mackenzie Walk
020 3985 1330

IBÉRICA CANARY WHARF
Cabot Square
ibericarestaurants.com

IBÉRICA LA TERRAZA
Cabot Square
ibericarestaurants.com

IPPUDO CANARY WHARF
Crossrail Place
020 3326 9485

ISLAND POKÉ
Crossrail Place
islandpoke.com

THE IVY IN THE PARK
50 Canada Square
020 3971 7111

M RESTAURANT
Bank Street Park
mrestaurants.co.uk

NICOLAS WINE BAR
Cabot Square
020 7512 9283

NO35 MACKENZIE WALK
Mackenzie Walk
020 8059 8881

OBICÀ MOZZARELLA BAR
West Wintergarden
020 7719 1532

OLE & STEEN
Crossrail Place
020 3908 7000

THE PAGINATION
Cabot Square
020 7512 0397

THE PARLOUR
The Park Pavilion
0845 468 0100

PERGOLA ON THE WHARF
Coming soon to Crossrail Place
pergolacanarywharf.co.uk

PLATEAU RESTAURANT, BAR & GRILL
4th Floor, Canada Place
020 7715 7100

ROCKET
Churchill Place
020 3200 2022

ROKA
The Park Pavilion
020 7636 5228

SHAKE SHACK
The Park Pavilion
01923 555 182

STICKS'N'SUSHI
Crossrail Place
020 3141 8230

WAHACA'S MEXICAN STREET KITCHEN
Canada Square Park
wahaca.co.uk

640EAST
Montgomery Square
640east.co.uk

For further details, visit
canarywharf.com/eating-drinking

Scan the QR code to view
a full list of all cafés, bars and
restaurants at Canary Wharf



HOUSE OF FUN

The best in entertainment in Canary Wharf



ELECTRIC SHUFFLE

Shuffleboard has been around for centuries, and while its exact origins are unknown, it has been enjoyed across Europe for more than 500 years. Bringing the game firmly into the 21st century, Electric Shuffle has revamped the traditional board with vision technology that identifies the location of the puck, keeps score and guides players via an interactive screen. Refuel between games with cocktails and sharing pizzas at the bar tables. There's also a brunch menu available from Thursday to Sunday.

*Cabot Square,
020 8059 4163*

EVERYMAN CINEMA

When Everyman was founded in 2000, it was done so with the mission to revamp the cinema experience, creating a more lifestyle-orientated venue where guests could enjoy a glass of wine and a meal alongside the latest flicks. At the Crossrail Place branch, three screens and a menu of pizzas, sharing plates and 'Spielburgers' bring this vision to life. The screens can also be hired for special occasions, and the cinema regularly hosts special events, film launches and live satellite broadcasts.

*Crossrail Place,
087 1906 9060*



WANYOO

Founded in 1998, Wanyoo has grown to become the largest esports gaming chain in the whole of Asia, and is quickly expanding its remit across the globe. The Crossrail Place branch opened last year, bringing the best professional esports equipment to Canary Wharf. Plug in and challenge gamers from across the world in the ESport Room, play together in the Team Room or watch esports games live on the big screen.

*Crossrail Place,
wanyoo.co.uk*



WAHACA'S MEXICAN STREET KITCHEN

From a converted 1958 Citroen HY van in Canada Square Park, Wahaca makes its signature Mexican street food using a charcoal robata grill to give its steak and chicken dishes a delicious chargrilled flavour. Visit for burritos, tacos and salads to go.

*Canada Square Park,
wahaca.co.uk*



AHI POKÉ

Inspired by their travels in California, friends Jeremy Coste, Gabriel Cohen-Elia and David Bellaiche founded Ahi Poké with a mission to bring their own brand of the popular Hawaiian dish to the UK. The team use responsibly-sourced seafood to merge Hawaiian, Asian and Middle Eastern flavours.

*Wharf Kitchen, Jubilee Place,
ahipoke.co.uk*



PILPEL

Uri Dinay's grandfather created a falafel recipe that's so good it's been in the family for 60 years, and is now the staple dish in the chef's seven London venues. The Canada Place branch offers crispy falafel balls wrapped in pitta breads and served with vegetables and houmous.

*Canada Place,
020 7199 3594*



RAINBO

What began life as a humble food truck serving gyoza dumplings has grown into a thriving business celebrating the many standout dishes of Japanese cuisine. Alongside its signature dumplings, Rainbo in Wharf Kitchen offers a menu of katsu wraps and pork belly rice bowls.

*Wharf Kitchen, Jubilee Place,
020 7513 2502*



BIRD

If you like your savoury flavours with a side of something sweet, make a beeline for Bird in Wharf Kitchen. The house dish sees American-style crispy chicken thighs topped with Monterey Jack cheese, drizzled with maple syrup and sandwiched between two neon-pink waffles. Prefer your chicken sugar-free? Opt for a burger, wrap or buttermilk chicken combo.

*Wharf Kitchen, Jubilee Place,
020 3946 6070*



THE ATHENIAN

In a remote mountain village in Crete, The Athenian founders Efthymios and Neofytos met a local woman who shared her culinary wisdom with the two budding chefs. Now, they use their new-found skills to educate the UK on the finest Greek cuisine. Visit Wharf Kitchen for souvlaki and gyros.

*Wharf Kitchen, Jubilee Place,
athenian.co.uk*



BIANG

The city of Xi'an in northwest China has a diverse culture, which helps inform a cuisine of both Chinese and Western flavours. Biang in Wharf Kitchen brings the region's signature dishes to the capital, with Chinese burgers and hand-pulled 'Biang' noodles doused in the restaurant's signature chilli oil.

*Wharf Kitchen, Jubilee Place,
020 7718 8700*



MAMA'S JERK

Mama's Jerk in Wharf Kitchen has taken a family recipe and built a flavour-punching menu of wraps, wings and chips doused in secret Jerk BBQ sauce. Order yours with plantain and Scotch bonnet pepper pickle.

*Wharf Kitchen, Jubilee Place,
mamasjerk.com*



From Jamaica to Japan, Canary Wharf's street food-inspired vendors offer an eclectic mix of world flavours

RICE GUYS

Rice Guys was founded after three friends spotted a gap in London's lunch scene for delicious and healthy Chinese food that mirrored the cuisine they enjoyed at home. Expect dishes such as smoky barbecue pork bowls and Hainanese roast chicken.

*Reuters Plaza,
riceguys.co.uk*



HOT PLATES



LITTLE FARM

Little Farm is all about high-quality, seasonal produce, which arrives fresh each day and is turned into delicious all-day dishes.

Reuters Plaza, little-farm.com



MAMALAN

A former supper club-turned-street food business, MamaLan offers Chinese cuisine such as bao buns, noodle soups and bubble tea.

Reuters Plaza, mamalan.co.uk



COJEAN

Cojean was founded in 2001 with a mission to bring nutritious food to the takeaway market, serving a menu of salads, acai bowls and juices.

cojean.co.uk, 020 3976 9884



YUMTEA

Independent Asian teabar and patisserie, Yumtea, will offer a range of world-class tea and a unique range of tea-based cakes.

Coming soon, Canada Place



FLOWERS & PLANTS CO.

Florist Flowers & Plants Co. offers a range of rainbow bouquets and potted house plants for delivery.

Canada Place, flowersandplantsco.com



LAP BIKES

Shop high-quality E-bikes, road racers and city bikes, or bring your own model in for a repair or service, at LAP Bikes Canary Wharf.

Churchill Place, 020 8396 6983



TIAN TIAN

Tian Tian will soon be bringing trendy groceries and traditional South-east Asian street food to the Estate.

Coming soon, Canada Place, tiantian.london



SEOUL BIRD

Judy Joo is bringing her South Korean restaurant Seoul Bird to Canary Wharf. Don't miss the signature dish: Korean fried chicken.

Jubilee Place



NEAT BURGER

This Lewis Hamilton-backed vegan restaurant offers a menu of burgers, nuggets and hot dogs made using 100% plant-based ingredients.

Cabot Place



MMY WOOD WHARF

This community market specialises in artisanal European produce and organic and biodynamic wines from small vineyards.

Wood Wharf



GERMAN DONER KEBAB

German Doner Kebab offers a nutritionally-balanced approach to traditional kebabs, with a menu of wraps, pittas and burgers.

Cabot Place



THE LONDON PROJECT

Those who've recently strolled through Wood Wharf may already have spotted two water pavilions anchored in Water Square. Creating an extension of the district's outdoor space, one of the floating platforms will become home to The London Project, which will open by the end of 2021. The restaurant, bar and lifestyle venue will deliver a unique dining experience, with art, music and an in-house gin distillery.

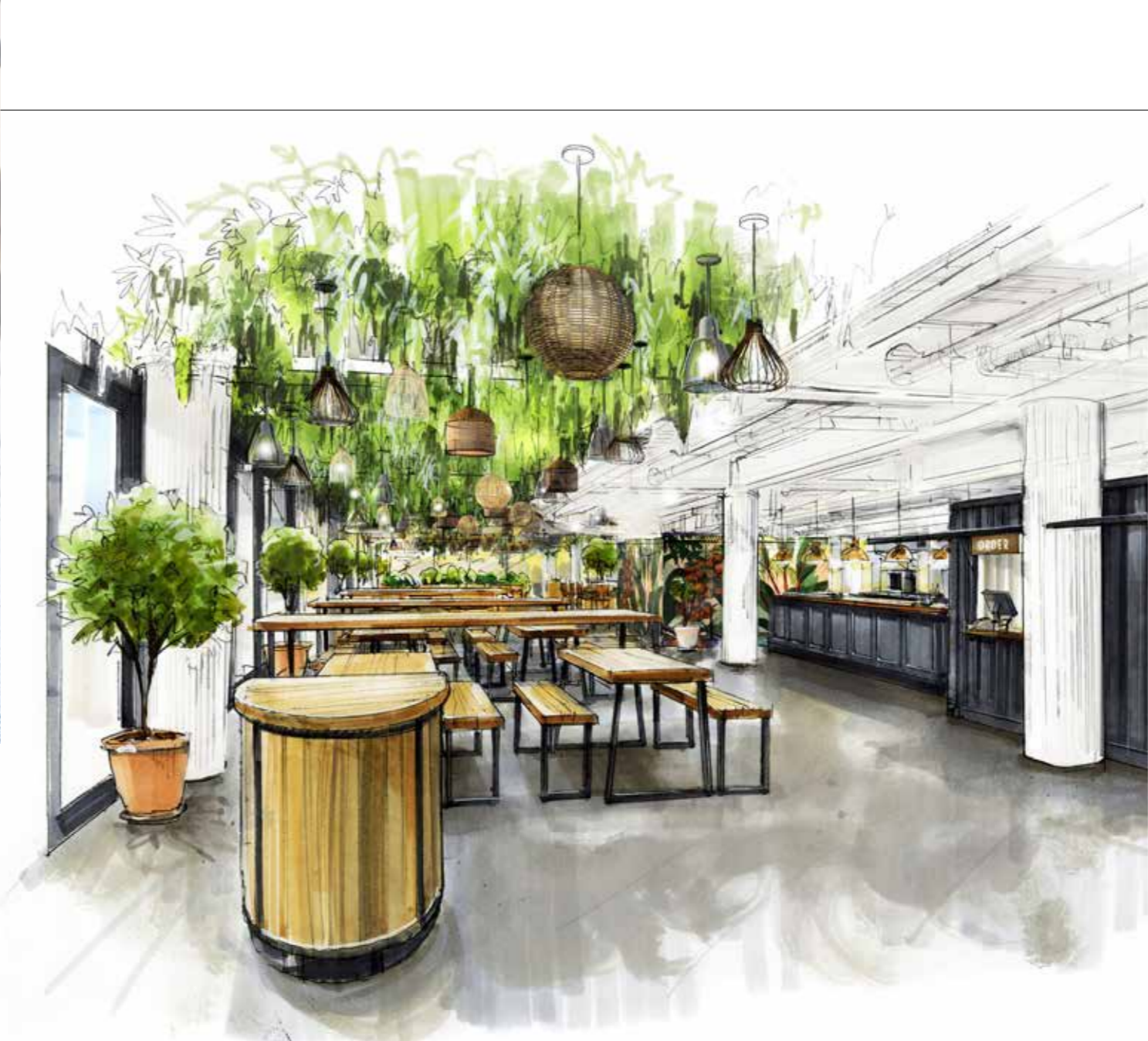
Coming soon, Wood Wharf



GOBOAT

Anchors aweigh: GoBoat has arrived in Canary Wharf, offering the opportunity to see the Estate from a whole new perspective. Don your captain's hat and take to the waters with friends on your own self-drive boat, winding your way through the docks and taking in the sights of Canary Wharf as you go. The GoBoat crew will show you the ropes before you jet off, and will provide you with a detailed map of the Estate so you can chart your route. The boats are available to hire for up to three hours.

Churchill Place, goboat.co.uk



PERGOLA ON THE WHARF

The first bricks and mortar site by Incipio Group, the brain behind Pergola Paddington, The Prince and Lost in Brixton, Pergola on the Wharf is an elevated version of its sister venues, with panoramic waterside views, a heated wraparound terrace and three bars. The menu is informed by nature, with seasonal produce served from permanent vendor Earth, Land and Sea. There will also be a guest kitchen with a rotating series of chefs and street food specialists.

Coming soon, Crossrail Place, pergolacanarywharf.co.uk

RAISE A TOAST

Update your wardrobe for the summer season with the latest fashion collections

THE HEAT IS ON



Claudie Pierlot

GARDEN STATE

After a year spent inside, the designers at Claudie Pierlot are heralding a season of frolicking in the great outdoors with its new range of summer clothing and accessories. The Cool Garden collection includes floral dresses, botanical-inspired prints and breezy blouses made for lazy days relaxing under the sun. Just as the design has been inspired by nature, so too has the collection's production. Having launched its Claudie Cares initiative in 2019, a four-step commitment to becoming more sustainable, the French fashion label has begun to deliver on its promises with this new range. Look out for GOTS-certified organic cotton, FSC-certified viscose and recycled wools.

Claudie Pierlot, Jubilee Place, uk.claudiepierlot.com



Sandro Paris

GREEN PLANET


Sandro Paris has set itself some impressive sustainability goals, including pledging to make more than 60 per cent of its products eco-responsible by 2025, and ensuring 80 per cent of its suppliers are certified by the end of 2021. Big steps have already been taken with the SS21 collection. Printed silk dresses, T-shirts made using eco-responsible cotton and denim shorts produced using an environmentally-friendly wash are perfect for balmy summer evenings, while knitted twinsets, made from responsibly-sourced wool, merge a new-found love of loungewear with season-appropriate silhouettes.

Sandro Paris, Jubilee Place, 020 7718 8683


Jewellery Box

GOING FOR GOLD


Sparkling accessories from Canary Wharf's leading jewellers




Lumina Pavé Rotating Bangle, £1,850, Vashi, Cabot Place



Honeycomb Diamond Pendant, £1,550, David M Robinson, Jubilee Place



Layered Necklace, £150, Monica Vinader, Jubilee Place



Sparkling Crown Ring, £90, Pandora, Cabot Place



Maje

BAG IT UP

From structured totes to beach-ready bags, Maje's accessories collection offers finishing touches for your summer wardrobe. New for this season is the boxy Mini Pyramid in ecru crocodile-effect leather, and the signature M bag updated in an easy-breezy crochet design.

Maje, Jubilee Place, 020 7718 8779



Zara

SUMMER LOVIN'

Whether you're hoping for a holiday abroad or looking forward to spending the summer in the city, look to Zara's SS21 collection. The new range includes maxi dresses in jewel tones, flared trousers and statement jewellery.

Zara, Cabot Place, 020 7715 1970

SECOND NATURE

COS's SS21 collection is all about positivity, projecting an optimistic message for the planet and its people. As part of this message, the brand is championing sustainability in a big way, from organic cottons and zero-waste knitwear sets to jewellery crafted from recycled yoghurt pots. An impressive 86 per cent of the 2021 collection has been made using sustainably-sourced materials, a big step towards the

brand's end goal of 100 per cent. A new collaboration with Antwerp-based brand Yuma Labs further enhances COS's commitment to circularity with the label's first sunglasses collection, which is crafted from 100 per cent recycled materials and can be completely recycled at the end of its life.

COS, Jubilee Place 020 3426 7590



COS

ELSEWHERE...

Other womenswear and accessories brands on the Estate:

- Accessorize
- ASICS
- Bimba Y Lola
- BOSS
- Bremont
- Calvin Klein Underwear
- Church's English Shoes
- Coach
- David Clulow Opticians
- Dune London
- GANT
- Goldsmiths
- Hawes & Curtis
- Hobbs
- JD Sports
- John Lewis
- Jones Bootmaker
- Kate Spade New York
- L.K.Bennett
- Levi's
- lululemon
- Mango
- Massimo Dutti
- Monsoon
- Montblanc
- Oliver Bonas
- Ollie Quinn
- Paul Smith
- Polo Ralph Lauren
- Reiss
- Superdry
- Sweaty Betty
- Ted Baker
- The Kooples
- The White Company
- Tom Davies Bespoke Opticians
- Vision Express
- Watches of Switzerland
- Watch Finder & Co
- Wolford

For further details, visit canarywharf.com/shops-services



Aegean Blue
Slim Fit Oxford
Shirt, £95

TASTE THE RAINBOW

Explosions of colour is the big new trend. Every primary and secondary colour you can think of has been used for Polo Ralph Lauren's Oxford shirt collection – perfect for barbecue season.

*Polo Ralph Lauren, Cabot Place,
020 7519 1025*

COME RAIN OR SHINE

The Great British summer is an unpredictable affair. One minute you're jogging along in the sun, the next you're being hit in the face by hail stones. So, it's good to know that GANT has us covered. Weather the storms with this nautical-inspired Rough Weather Bag, look slick on the tennis court in a vibrant polo shirt, or head to a garden party in an Italian-crafted blazer. Just remember to pack your umbrella.

*GANT, Canada Place,
020 7715 7470*



Rough Weather
Bag, £280

After a year in hibernation, this summer is all about statement shirts and colourful accessories. Go big, or go home (and literally no one wants to do that)



GANT

FIX UP, LOOK SHARP

Tracksuits and gym vests are comfy, sure, but there's nothing quite like dressing up to make you feel on top of your game. This double-breasted blazer is a friendly reminder of the top-rate tailoring we know and love from Reiss. Pair it with jeans and a denim shirt for a modern twist on an old classic. Elsewhere, the brand's cotton textured polo shirt features a sleek press-stud neckline.

*Reiss, Jubilee Place,
020 7519 6176*



Reiss



Reiss



How Soon is Tomorrow
T-shirt, £95; Black
leather sandals, £260

SUMMER READY

Festival season is finally on the horizon (fingers crossed). All being well, there are some stellar line ups at the end of August, from Field Day to All Points East. Look the part in a simple white T-shirt and black leather sandals.

*The Kooples, Canada Place,
020 7715 5378*

WHEN THE POOL CALLS

It may only be on a staycation, but somewhere, somehow, we'll find ourselves by a swimming pool before the summer's out. And we'll be reaching for our favourite Orlebar Browns when we do. Artist Peter Phillips is bringing 1960s poolside vibes with his Pop Art-printed shirts. Pair them with grey swimmers or a pop of yellow.

*Orlebar Brown, Jubilee Place,
020 7513 1157*



Front Axle
Print Capri
Collar Resort
Shirt, £195

Toucan Shorter-
Length Swim
Shorts, £195



Orlebar Brown

ELSEWHERE...

ASICS
Barker Shoes
Bremont
Calvin Klein Underwear
Charles Tyrwhitt
Church's English Shoes
Coach
COS
Crockett & Jones
David Clulow Opticians
David M Robinson
Dune
English Tailoring
Goldsmiths
Hackett
Hawes & Curtis
JD Sports
John Lewis
Jones Bootmaker
Levi's
lululemon
Massimo Dutti
Montblanc
Moss Bros
Sandro Paris
Superdry
Ted Baker
Tom Davies Bespoke Opticians
Vashi
Watches of Switzerland
Watch Finder & Co
Zara

For further details, visit
[canarywharf.com/
shops-services](http://canarywharf.com/shops-services)

OFF-COURT CLASSICS

BOSS has created a capsule collection with Russell Athletic to bring together expert tailoring and sportswear know-how. Pastel hues deliver a relaxed look across T-shirts, jackets, joggers, trainers and caps. You can even personalise your own sweatshirt; choose from eight different colours and pick letters and numbers to adorn the back.

*BOSS, Cabot Place,
020 7715 5302*



BOSS



Unisex relaxed-fit
cardigan in cotton
with exclusive logo,
£279



Vincent Van Gogh
'Self Portrait'
Skateboard
Triptych, £495

TICKLED PINK

You can count on Paul Smith to add colour to the season. If you're brave enough, don these fuchsia nubuck leather trainers for a seriously elevated walk in the park. Go a step further with this collection of Van Gogh skateboards in collaboration with The Skateroom – although they're probably less for the park and more for your wall.

*Paul Smith, Cabot Place,
020 7519 6819*



Pink Nubuck
'Hassler' Trainers,
£295

MAN IN THE MIRROR

From beard trims to spring scents, these are the best grooming brands on the Estate

BEST FOR SKINCARE

From silky shave balms to moisturising beard oils, Space NK in Cabot Place and John Lewis in Canada Place are the destinations for the latest launches from leading luxury skincare brands.



Revive Moisturising Renewal Cream, £140, Space NK, Cabot Place

BEST FOR HAIR

In need of a post-lockdown tidy up? Whether yours is a buzzcut, skinfade or wet shave, book an appointment at Ted's Grooming Room in Cabot Place and Churchill Place, ADAM Grooming Atelier in Cabot Place and Jubilee Place or Toni&Guy in Canada Place.



Shaving Brush, £80, ADAM Grooming Atelier, Cabot Place & Jubilee Place

BEST FOR FRAGRANCE

Fragrance expert Penhaligon's has been crafting its colognes since 1870. Visit Cabot Place for the latest scents. For brands such as Le Labo and Tom Ford, John Lewis in Canada Place is the place to go.



Le Labo Another 13, from £58, John Lewis, Canada Place

Those on a quest for flawless skin will find a variety of cosmetic brands on the Estate. A treasure trove of cult favourites, Space NK in Cabot Place is home to brands such as Drunk Elephant, Susanne Kaufmann and The Ordinary. Kiehl's in Jubilee Place, meanwhile, offers nature-inspired skincare made using science-approved formulas. For skin woes that a cream won't shift, book a free consultation at Sk:n in Canada Place. The clinic offers more than 200 treatments for problems such as acne, laughter lines and pigmentation. Thérapie Clinic in Jubilee Place is the destination for laser hair removal, microneedling and treatments that tackle acne scarring and rosacea.



Clockwise from left: Susanne Kaufmann Tonic Soothing, £31; Drunk Elephant T.L.C. Sukari Babyfacial, from £24, both Space NK, Cabot Place; Midnight Recovery Concentrate, £41, Kiehl's, Jubilee Place



Le Chalet Cryo, Canada Place

There's no use looking good on the outside if you don't feel good on the inside. Get A Drip opened in Cabot Place at the tail end of last year, offering hydrating, multivitamin and immunity-boosting IV drips and shots. Joint pain, trapped nerves and lower back pain, meanwhile, are all conditions the wizard specialists at Freedom Clinics in Canada Place can help with; book an appointment for osteopathy, physiotherapy or chiropractic services. For a quick fix, try three minutes in Le Chalet Cryo's cryotherapy chamber, also in Canada Place. The -90°C dry air helps rejuvenate skin, reduce pain and inflammation, strengthen the immune system and accelerate muscle recovery.

BODY BEAUTIFUL



Jon Hala, Jubilee Place

MANE ATTRACTION

Whether you braved a DIY chop or let your hair run wild, chances are you'll have gained a newfound appreciation for hairdressers over the past year. In Jubilee Place, celebrity hairdresser Jon Hala is on hand to give tired tresses a new lease of life. The stylist opened his eponymous salon in 2019, offering his expertise on precision technical cutting, hair extensions and keratin smoothing treatments. Fancy shaking up your look? Book a complimentary style consultation at Toni&Guy in Canada Place, where the award-winning team of stylists will help you find the perfect cut.



From top: Elderflower Cordial Cologne, £55, Jo Malone London, Cabot Place; Bergamotto di Calabria La Spugnatura, £124, Acqua di Parma, John Lewis, Canada Place; Bluebell Eau de Toilette, £110, Penhaligon's, Cabot Place

If your make-up collection is in need of a refresh, make a beeline for MAC in Jubilee Place, where the brand's vast range of make-up artist-approved cosmetics can be found. If you're a Bobbi Brown fan, the Cabot Place boutique is the destination for the latest launches — don't miss the Luxe Defining Lipstick, which has a tapered shape to aid application. Next door in Space NK, you'll find Charlotte Tilbury's bestselling Flawless Foundation, Magic Cream and Pillow Talk lipsticks. Visit Blink Brow Bar in Canada Place to make the most of its menu of eyebrow and eyelash services, including threads, tints and waxes.

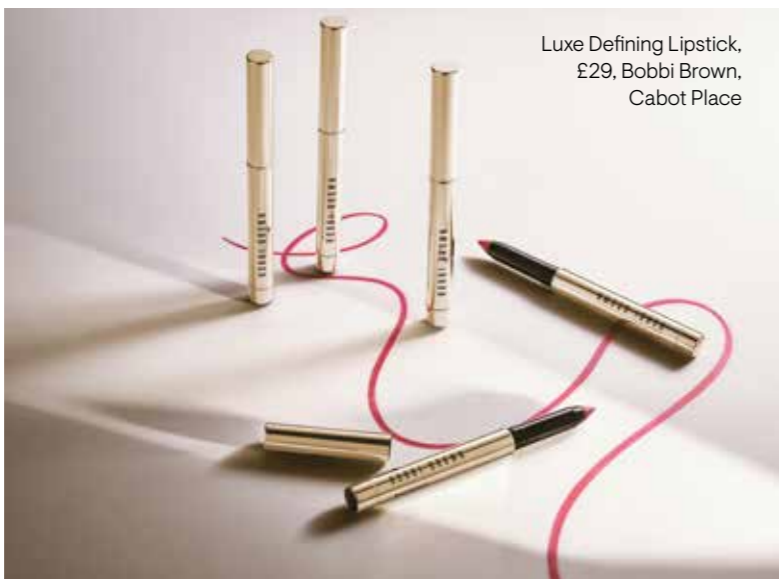
FACE TIME



SCENTS OF STYLE

Celebrate the easing of restrictions with an uplifting scent that echoes the vibrance and optimism of this time of year. At Jo Malone London in Cabot Place, the fun and frivolity of British fêtes has been reimagined in the new Marmalade collection of limited-edition fragrances. At Penhaligon's, also in Cabot Place, the fragrance connoisseurs have bottled the fresh floral scent of spring in its Bluebell Eau de Toilette, while Acqua di Parma in John Lewis has unveiled the latest edition to its Blu Mediterraneo collection, Bergamotto di Calabria La Spugnatura. With notes of bergamot, mandarin and grapefruit, it's the perfect scent for summer.

Spring into the new season feeling revitalised with uplifting scents, a fresh trim and the latest make-up collections



Luxe Defining Lipstick, £29, Bobbi Brown, Cabot Place

BACK ON TRACK



SWEAT BY BXR

The classes at Sweat by BXR were developed in collaboration with pro-boxers, sports professionals, osteopaths and physios to provide time-efficient, high-energy workouts. The club is due to reopen on 17 May, at which point you'll be able to get your sweat on at a series of full-body workouts, designed to improve strength and conditioning, in small-group classes.

Crossrail Place,
020 7719 1970



BARRY'S

The self-styled 'best workout in the world' is back and is inviting you to return to the Red Room. It's here that Barry's high-intensity interval workouts blast through fat and build muscle. Visit the Fuel Bar for Barry's in-house customised shakes, or shop the brand's latest gym kit collaborations.

Crossrail Place,
020 3928 2804



AWAKN

Awakn has gone al fresco. The wellness and fitness facility is running outdoor classes at Crossrail Place Roof Garden. Choose from a range of classes every Monday, Thursday and Saturday. Alternatively, head for Jubilee Place for high-intensity indoor workouts.

Crossrail Place Roof Garden (pop-up)
/ Jubilee Place, 020 7719 1786



PELOTON

Peloton takes the boredom out of working out from home by connecting you to real-time instructors from around the world. Classes range from 5 to 90 minutes, and are tailored to every mood and fitness ability. Discover which of the immersive brand's equipment best suits your lifestyle: the Peloton Bike, the Peloton Bike+ or the Peloton Tread.

Cabot Place,
020 3974 2410

After a stop-and-start few months, reboot your fitness regime at one of London's leading health clubs

THIRD SPACE

Gyms have reopened, meaning that you can now enjoy Third Space's 23-metre indoor pool and 13-metre high climbing wall. Alternatively, make the most of the club's outdoor exercise classes at Bank Street Park. Third Space's Yard, Cycle and Yoga tents are fully covered and are equipped with immersive headphone sound systems. Classes are available to both members and non-members. See thirdspace.london for details.

Bank Street Park (pop-up) /
Canada Square, 020 7970 0900

Gym Kit

ALL THE GEAR

The workout wear to keep you in peak condition



Women's EvoRide 2, £115,
ASICS, Jubilee Place



Galaxy Watch Active, £159,
Samsung, Canada Place



Interlock Zip-Through Hooded
Sweatshirt, £179, BOSS, Cabot Place



Take Form Yoga Mat 5mm, £108,
lululemon, Jubilee Place



BMC Roadmachine One Force eTap AXS,
£4,700, LAP Bikes, Churchill Place



Nike Gym Club 2 Duffel Bag, £27,
JD Sports, Canada Place



Athlete Seamless Long Sleeve Top,
£55, Sweaty Betty, Jubilee Place

Whether it's a weekday or a weekend, there's plenty to keep everyone entertained in Canary Wharf, from a minigolf course to epic ping pong tables

FUN & GAMES

FUN FOR ALL THE FAMILY

Canary Wharf's Summer Family Festival is back and it's better than ever. There's everything from movies, theatre and music, to workshops at the weekend for children of all ages. Head over to Columbus Courtyard, where there are a host of children's floor games to keep little ones entertained.

29 May – 28 August, free, various locations



POP-UP PING PONG

Ping pong is back at Canary Wharf with a flourish on the turfed green of Cabot Square. Designed by renowned illustrator Kelly Anna the new tables feature bold and colourful prints. A steward will be on hand to provide bats and balls at certain times throughout the week.

12-6pm, Thursday – Sunday, free, Cabot Square



MAKE IT MINI

While the Augusta Masters might be over, minigolf has just begun in Canary Wharf. And the course has had a refresh. The new design at Columbus Courtyard is sure to put your skills to the test thanks to a new nine-hole game. It's free to play and stewards are on hand with clubs and balls.

12-6pm, Thursday – Sunday, free, Columbus Courtyard



SHOOTING HOOPS WITH YINKA ILORI

AS YINKA ILORI PREPARES TO BRING A MULTI-COLOURED BASKETBALL COURT TO BANK STREET PARK, THE ARTIST DISCUSSES HIS DESIGN PROCESS, HIS BIGGEST INFLUENCES AND WHERE HE FINDS INSPIRATION

Tell us about your design for the basketball court. The slogan of the court is 'be the best you can be'. I found it difficult not to have time and space to play in public spaces last year, so I wanted to create an area that encouraged play for everyone. I wanted to give people a place they can come and just enjoy being outdoors and being together again.

What is your design process? My design process doesn't have a particular rhythm or formula. It mostly starts in a sketch book. I love to travel; if I go to Nigeria, for example, I love to take

in the way the buildings look, the patterns and colours on people's clothes, and just absorb everything in my surroundings. Wherever I am I find that everything that is part of that culture inspires me.

How was your design inspired by Canary Wharf? Canary Wharf is known for its skyscrapers, and my drawings draw inspiration from and resemble a lot of these structures. You will notice this particularly in the arch shapes found in my work for this project. My use of colour and pattern show that this is a place that is changing, challenging perceptions of what people might have once thought of Canary Wharf. It is more than a financial district, it is a place where people can live, play, and enjoy themselves. A place that celebrates different cultures.

What has been your favourite project to work on? Every project is different and important to me for different reasons. I have loved this project because this is my first ever basketball court. I love that it's inclusive and gives somewhere for the community to get together; as the court is free to use it means it can be enjoyed by everyone. I've done everything from a pavilion to an underpass to a skate park and now a basketball court. All of these projects are different but great in their own way.

What is the best advice you've received? I met Tracey Emin when I was working in M&S. She said to me "take your time, trust your process and don't rush yourself". I think particularly in this era of Instagram and social media you can feel like you need to seek validation constantly. It's better to step back, trust the process and perfect your craft.

Who is your biggest influence? My parents, because of their journey and everything they have done for me and my siblings. Leaving Nigeria with no plan and just figuring stuff out on their own. They chased their dreams; they've achieved so much and continue to do so.

12-6pm open and staffed, 6pm-10pm open and unstaffed, from Friday 21 May, free, Bank Street Park. See canarywharf.com for on-court charity events, lessons and tournaments.



WHAT'S ON IN CANARY WHARF

15 APRIL ONWARDS

Ping pong
Thursday – Sunday,
12-6pm, Cabot Square

15 APRIL ONWARDS

Minigolf, Thursday –
Sunday, 12-6pm,
Columbus Courtyard

MAY – OCTOBER

Be the Best You Can Be
by Yinka Ilori,
Bank Street Park

MAY – AUGUST

Sunny Day Sessions,
12-2pm, Canada Square
Park, Jubilee Park &
Montgomery Square

29 MAY – 28 AUGUST

Summer Family Festival,
across the Estate

21 June – 21 August

Summer Lights
Estate Wide
Daily

5-26 JULY

Outdoor Theatre,
Mondays, 7pm,
Westferry Circus

25-27 JUNE

Summer Fashion Event
across the Estate

4-5 SEPTEMBER

Dancing City, 1-5pm,
across the Estate

23-24 SEPTEMBER

Paddle Board Tasters,
Middle Dock

Please scan the QR code or check our website for the most up to date information, canarywharf.com/whats-on



Please note the events calendar is correct at the time of print. Due to changing circumstances, details are subject to change.

CULTURAL FIX



From Shakespeare al fresco to live lunchtime entertainment, the Estate is bustling with outdoor performances, music and dancing

CLASSIC HITS

Classical music will be floating through Jubilee Park and the pristine lawns of Canada Square Park this summer. Throughout the season, a number of musical acts will be bringing harmonious scores to your midday mealtimes with Lunchtime Classics. Working with local east London musical groups, Canary Wharf will bring a mix of classical, jazz and show tunes to the Estate. Pick up a picnic from one of our many restaurants or stores in Canada Place or Jubilee Place or visit one of our pop up bars for a lunchtime tipple and enjoy the performances of classical melodies, soothing compositions, bright show tunes and eclectic jazz.

Wednesdays, July – August, 12.30–2pm, free, Jubilee Park & Canada Square Park

“Dancing City will see Canary Wharf’s squares, parks and plazas transformed into an energetic two-day dance festival”

FOOTLOOSE AND FANCY-FREE

Dancing City will see Canary Wharf’s squares, parks and plazas transformed into an energetic two-day dance festival. The outdoor dance programme is part of the Greenwich+Docklands International Festival, an annual roster of free outdoor theatre and performing arts that aims to spread a little joy wherever it goes. Dancing City first came to Canary Wharf in 2002 and continues to entertain and delight audiences. Popping up in-between buildings and parks, look out for Motion House, who explore our relationship with the environment and Born to Protest by Just Dance Theatre commissioned by Stomping Ground.

4&5 September, 1-5pm, free, across the Estate



“All the world’s a stage, and all the men and women merely players.” Perched on the River Thames, an outdoor theatre is being brought to life in the leafy hub of Westferry Circus. From classic plays to your favourite Shakespeare productions, disappear into a realm of fantasy. Every Monday during July, four theatre companies will be bringing new stories to life as dusk falls. Previous performances have included the tragedy of *Macbeth*, the epic love story of *Romeo & Juliet*, and Oscar Wilde’s light-hearted comedy *The Importance of Being Earnest*. Think bright costumes, bursts of song and dance, and an evening of show-stopping entertainment. The stage will be set and the lights rigged so you can enjoy some top-quality entertainment.

Mondays, 5–26 July, 7pm, free, Westferry Circus

THE SHOW MUST GO ON



SUNNY DAY SESSIONS

Remember live music? Remember how close we used to get to one another, jumping up and down in tightly-packed venues? And dancing. Oh, how we loved to dance. Well, Canary Wharf is bringing the good vibes back. Enjoy live music, pop-up gigs and bright new talent thanks to the Estate’s outdoor Sunny Day Sessions. Across Canary Wharf’s parks and squares, new up-and-coming artists are getting ready to perform at pop-up locations. When the sun is shining, musicians will be grabbing their guitars and maracas from May through to August. Head for Canada Square Park, Montgomery Square and Jubilee Park to hear covers of your favourite tunes or be the first to hear new material. The programme aims to provide an uplifting soundtrack to your day.

Various days, May – August, 12–2pm, across the Estate

WHERE THE ART IS

As nature blossoms and temperatures rise, a host of critically-acclaimed artists are creating their own reaction to the changing seasons



MEETING MORAG MYERSCOUGH

LONDONER THROUGH-AND-THROUGH, MORAG MYERSCOUGH BRINGS AN EXPLOSION OF COLOUR TO THE CANARY WHARF CITYSCAPE WITH A VIBRANT NEW ARTWORK

Can you tell us about your latest work in Montgomery Square? *Sun Pavilion* is a response to the reawakening we are hopeful for this summer. The sun radiates energy and brings joy. There is nothing better than the feeling of the warm glow of rays on your face – it ignites us all and raises our spirits.

Talk us through your creative process. I need the concepts to embed in my mind before I can translate them to paper. The first marks are always the

hardest – and the most exciting – as it is the beginning of making thoughts a reality. I have to make work that means something to me and then hopefully it will to others.

Does your design draw inspiration from Canary Wharf? The opposite. I wanted to make a work that was in total contrast to the huge glass and metal structures of Canary Wharf. The Pavilion is intimate, compact, and intensely coloured so it glows out from the surrounding buildings. The aim is for people to gravitate towards it and just spend time together safely. The Pavilion is made from wood and hand-painted; it's important that it has a human feel and is made by humans. We have lived in a virtual internal world for the past year – now it's important to make our way safely outside with others.

What aspect of your creative practice gives you the biggest thrill? The first time I show a sketch of a new work to someone. It's the most harrowing time but when you receive the response you hope for, it's also the most rewarding. Then, I like the process of making it, seeing the finished installation and watching how people respond to it. I'm really looking forward to doing some summer workshops there. The more I work with communities on my installations, the more I learn. It means so much to make work collaboratively and it's so incredibly rewarding.

How do you overcome a creative 'block' when it hits? That's a hard one! Sometimes I just have to make myself put pen to paper. I convince myself I'm not ready, but the best thing to do is to just start. It might not work the first time but once your brain has engaged the thoughts start flowing and it seems to happen. It's not good to force it, but a nudge in the right direction seems to work.

What is the best piece of advice you have ever been given? My biggest influences have been my mother, my father and my third-year tutor at Central Saint Martins, Geoff Fowle. He said to me: "always aim as high as possible, never start in the middle". I would say the same.

From 29 May, Montgomery Square, Morag Myerscough will also be holding a Community Workshop in the summer, details to follow on canarywharf.com



THE MINOTAUR AND HARE

Along the long boardwalk of Harbour Quay, there's a garden where kids can burn off energy and adults can watch the world go by... but you'll find that two creatures have beaten you to it. *The Minotaur and Hare on Bench* is a bronze sculpture created in 1995 by Sophie Ryder, a Royal Academy of Arts graduate and sculptor. The Lady-Hare has the body of a woman and the head of a hare; the yin to the yang of the masculine Minotaur. Ryder plays with these motifs in numerous works as a way of exploring contemporary culture through Ancient Greek mythology and its mystical beings.

The Minotaur and Hare on Bench, Harbour Quay Gardens

“Ryder explores contemporary culture through Ancient Greek mythology”



LET THERE BE LIGHT

Light art has been growing in popularity, with Canary Wharf's own Winter Light's festival becoming a firm favourite for locals. This summer, as many of us resume normal life again, visit our Summer Lights, a colourful exhibition which will celebrate light in its most natural form.

Summer Lights, 21 June – 21 August, free, across the Estate

A FIRM FAVOURITE



Helaine Blumenfeld OBE is no stranger to Canary Wharf. Over the past few years, children have explored and climbed their way through the American sculptor's outdoor exhibitions, while adults have admired the calming presence of her billowing sculptures.

Metamorphosis is a large bronze statue that was conceived in 2019 using digital techniques, including laser scanning and 3D printing, to masterful effect and has found a new home at Park Drive. It is an abstract formation of shapes that seem to undulate and move, seeming human at some points and ethereal at others.

Metamorphosis, Helaine Blumenfeld, Park Drive



Putting sustainability first has made Canary Wharf one of the most environmentally-friendly districts in the capital



As the world awakens to the effects of climate change, the decisive actions we take now have never been more important. For decades, Canary Wharf has been taking progressive steps to ensure those who enjoy the Estate can do so as sustainably as possible, and the actions taken by Canary Wharf Group, along with tenants, suppliers and the local community, have made it the most sustainable developer in the UK.

One of the most successful initiatives was 2018's award-winning Breaking the Plastic Habit, which aimed to remove single-use plastic from the Estate. Canary Wharf is now the first district in London, and the first commercial district anywhere, to be awarded Plastic

Free Communities status by charity Surfers Against Sewage.

Across the Estate, you'll find evidence of a proactive approach to sustainability. There are seven water refill stations, and recycling bins at every turn. There's a Sea Bin in Middle Dock too, which collects 180kg of plastic debris every year from local waterways, and solar-panelled Strawberry Smart Benches with Wi-Fi. And thanks to a dynamic Biodiversity Action Plan – to ensure a thriving ecosystem for cleaner air and healthier people – you can enjoy spotting bird and bat boxes, tufted ducks, mallards and even seals as you walk around the Estate, where you'll find six acres of parks, squares and amenity space.

Canary Wharf has sent zero waste to landfill from managed areas since 2009; instead, the strict recycling policies have meant that, since 2017, Canary Wharf has diverted almost 600 tonnes of coffee grounds from landfill into biofuels, and recycled approximately six million coffee cups. What's more, the Canary Wharf Estate has run on 100 per cent renewable electricity purchased

since 2012, and Wood Wharf was the first construction site to support the Mayor of London's Clean Air Campaign.

Canary Wharf Group is the largest sustainable developer in the UK with more than 11 million sq ft of sustainable-certified buildings, some of which have achieved an 'Outstanding' rating from the world's leading sustainability assessment body, Building Research Establishment. This is only awarded to the top one per cent of developments considered best in class when it comes to health and wellbeing, responsible sourcing and energy efficiency. In addition, all new developments are being designed with the WELL Building Standard™ requirements in mind, improving experience and wellbeing.

Underlining Canary Wharf's sustainability initiatives is a commitment to achieving net zero carbon by 2030, underpinned by approved Science Based Targets. So far, the steps taken have resulted in a 34 per cent fall in emissions since 2012 – a significant milestone and a poignant reminder that the actions we take now will have a resounding effect on the future of our planet.



“Canary Wharf Group has purchased 100 per cent renewable electricity since 2012”

SIMPLE STEPS

TO BE MORE SUSTAINABLE



1 Buy a refillable water bottle

Canary Wharf is home to seven water refill stations to help you reduce plastic waste. *Lund Skittle Bottle, £30, Oliver Bonas, Jubilee Place*

2

Recycle your old beauty packaging

Return 10 bottles to Kiehl's in Jubilee Place and you'll receive a complimentary travel-sized product. *Ultra Face Cream, £28, Kiehl's, Jubilee Place*



3 Switch to sustainable wine

Humble Grape stocks more than 400 varieties of wine from sustainable vineyards. *Domaine Garnier & Fils, Grand Cru Vaudésir, £74, Humble Grape, Mackenzie Walk*

4

Buy plastic-free alternatives

Reduce your plastic waste with L'Occitane's new range of solid shampoo bars. *Purifying Freshness Solid Shampoo Bar, £10, L'Occitane, Jubilee Place*



5

Buy from brands doing their bit

COS is taking steps to ensure 100% of its products are made using sustainably-sourced or recycled materials. *Ribbed Cardigan, £69, COS, Jubilee Place*



NEWFOUNDLAND

LAUNCHING IN SPRING 2021, NEWFOUNDLAND BY VERTUS IS THE UK'S TALLEST BUILT-TO-RENT DEVELOPMENT

CREATING AN ICON



Talk us through how the project began and where the design inspiration came from? After 30 years of building, this piece of land hadn't been touched. Jokingly, someone pointed to it and said, 'look, new-found land'. The name stuck. Our natural instinct was to centre the building on the dock so you had an epic first impression as you emerged from the station. But it also needed to have a close-range sense of material and detail; to look smooth and refined, not sharp-edged and brutal.

What makes a building iconic? Firstly, the building has to be a joy to use. Secondly, the design should be classic, ideally with a bottom, middle and a top (this is Newfoundland's elegant tripartite arrangement). Lastly, it must have a very clear long-range identity and a close-range quality of material. In other words, uniquely identifiable from a distance and inviting close up.

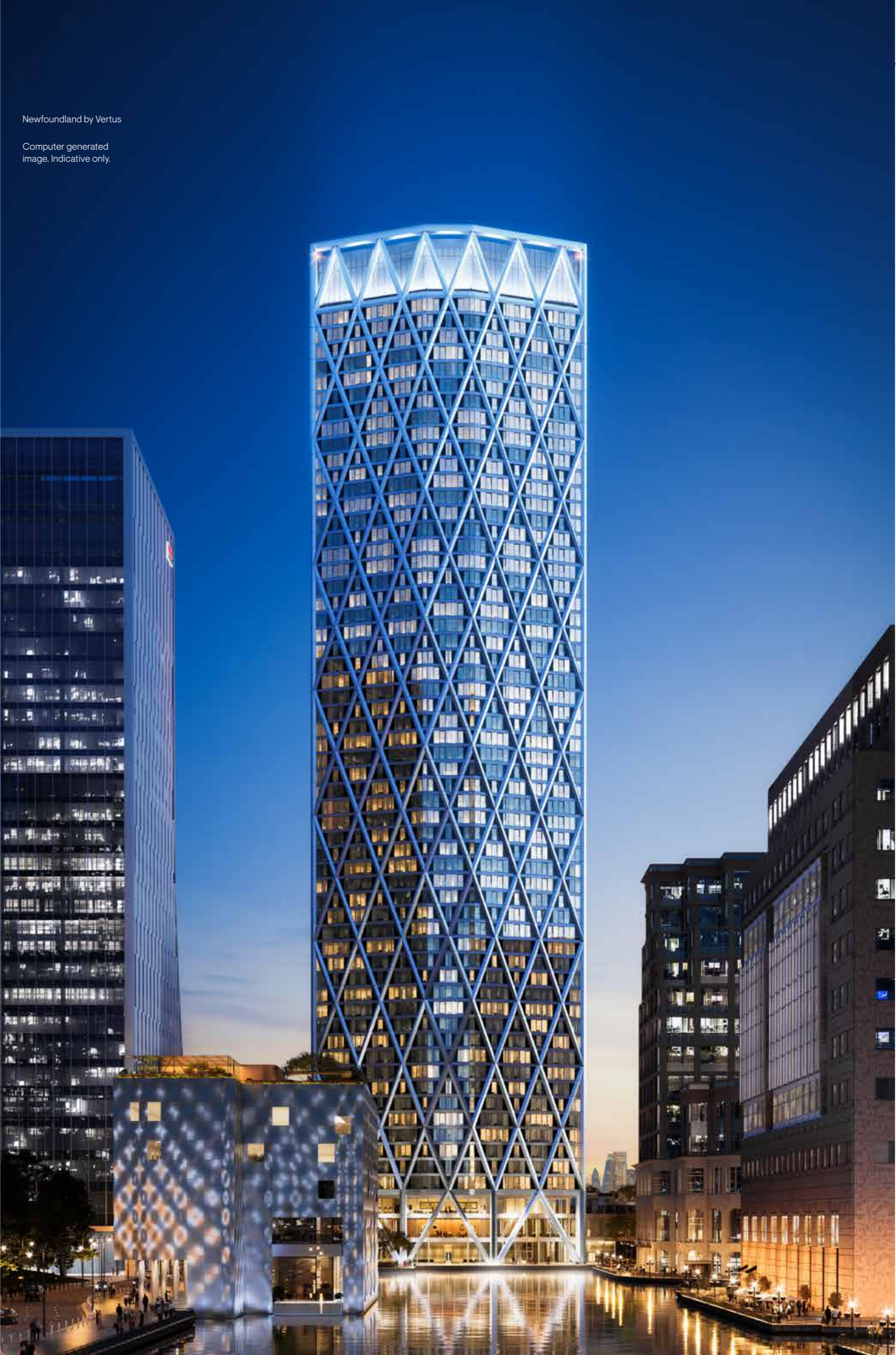
How did you use colour to differentiate Newfoundland? We chose a warm silvery grey that best modelled natural sunlight. Cool morning light makes Newfoundland look fresh and silvery, while warmer evening light makes it golden. Look next time we get a really deep pink sunset and you'll see it reflected in the building.

What are the main benefits of living in Newfoundland? It has to be the views. There are no buildings in front of you to the west or the east, making them uninterrupted, and Newfoundland's design makes the most of this. It's very generous, with spacious, well-planned apartments, their radial layouts angling them in such a way as to widen the rooms towards the perimeter.

thisisvertus.com

Newfoundland by Vertus

Computer generated image. Indicative only.



WHERE HOME MEANS MORE

FOUR OF CANARY WHARF'S FIVE FIRST RESIDENTIAL BUILDINGS ARE LOCATED IN WOOD WHARF, AND ALL WERE DESIGNED WITH WATER IN MIND. ALLIES AND MORRISON, THE MASTERMIND BEHIND THE MASTERPLAN, RESEARCHED THE AREA'S HISTORY – THE LEVELS, OLD DOCKS AND WATER SYSTEMS – SO THAT THE PLAN WOULD REFLECT BOTH THE MODERN URBAN SCALE OF CANARY WHARF AND THE SHEER DRAMA OF THE SURROUNDING WATERWAYS

FOR SALE



ONE PARK DRIVE

One Park Drive, designed by Herzog & de Meuron, is the signature building of the new district. Positioned at the head of the dock, the building's cylindrical design was inspired by its location, right at the water's edge. The tower "is like an inhabited rock," explains Jacques Herzog, "it does not really participate in any given vista. It has interesting views all around."



10 PARK DRIVE

At 42-storeys, 10 Park Drive is the work of British architects Stanton Williams. The elegant building overlooks docks on both its north and south elevations, and is connected to the water via beautiful landscaped gardens. "We wanted to create a structure that will engage at a human scale and be welcoming at street level," says Principal Director Paul Williams.

TO RENT BY VERTUS



8 WATER STREET

The lowest building within Wood Wharf, at 12 storeys, is 8 Water Street. The building, which is pet friendly, was designed to connect with the surrounding water. It was views of the dock, and the private landscaped gardens below, that inspired Stanton Williams to incorporate an expansive roof terrace into the building.



10 GEORGE STREET

The fourth residential building on Wood Wharf, the 37-storey 10 George Street, is the work of GRID Architects. The balconies of the building's apartments overlook waterside gardens and boardwalks below, while amenities include a gym, bar, private dining room and lounge, which opens out onto a large, south-facing terrace.

Further information on all buildings can be found at canarywharf.com/living

On the waterfronts of Canary Wharf, a quintet of new residential buildings is providing the first opportunity to live on the Estate

VERTUS

RESIDENTIAL
LEASING

NEW
FOUND
LAND

THISISVERTUS.COM

VIEW. RESERVE. MOVE IN.

VIEWS FROM LEVEL 39 AT NEWFOUNDLAND.