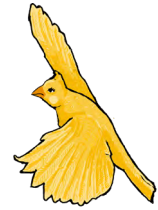


THE CANARY OF THE WHARF

A Mystery History Family Trail



Hello there, I am The Canary of the Wharf.

Join me on my Mystery History Family Trail as I guide you around Canary Wharf with my map, audio stories and activities. I'm going to take you on an adventure where you'll find nature shooting out of the middle of the city and discover history nestled amidst the Canary Wharf of today. We're going to meet a giant made of bronze, decode some mysterious clocks and find a building floating in the sky.

To follow this trail you need: Map, Activity Sheet and Audio Stories

All of these can be found at canarywharf.com/canarystorymap/

Share your adventures and photos here with the Canary Wharf community:

 canarywharflondon  tea_dance_little_people

To enter the Old Flo the Wharf Warrior competition (see activity 6) and be in with a chance of winning an Apple iPad:

Send a picture of your completed task sheet to OldFlo@canarywharf.com before 31 October 2021. The email must include the age and name of the entrant. A winner will be selected after the competition close date (complete T&C below).

Unlock a code to receive discounts from retailers:

Complete the task sheet to claim your reward from a Canary Wharf retailer. Take the code you create at the end of your trail (see activity sheet for more information) to any of our retailers listed on our website and exchange for a discounted treat. Participating retailers are listed on the website at canarywharf.com/canarystorymap/

Further Information:

MAP

Your Canary Wharf adventure starts at Crossrail Place Roof Garden. You can choose to follow the trail from No.1-10 **OR** take part and listen in an order that suits you. This is your family trail and your adventure.



AUDIO STORIES

The audio stories guide you around the locations on the map with a matching number (1-10). We suggest you listen to the introduction before you begin your tour.

Listening to Canary Wharf

is an extra activity to use in:



1. Crossrail Place Roof Garden
10. Jubilee Park

But you can listen anywhere you like. Canary Wharf is full of green spaces and places to stop and listen around you. You can of course listen to your audio stories as many times as you like, at home or out and about.

ACTIVITY SHEETS

Each location has physical and creative activities detailed on your activity sheets. Old Flo (Activity 6), one of our Wharf Warriors has a competition. If you would like to enter, draw Old Flo with her Wharf Warrior powers in the frame provided on your activity sheet and send in to OldFlo@canarywharf.com. You can complete this at any time.

Some Canary Advice, read before you go on your adventure:

GET TOGETHER A FAMILY ADVENTURE SURVIVAL KIT:

There are a few items we recommend you bring with you for your adventure to be able to complete your activities.

BEFORE YOUR VISIT:

- Print off your map and activity sheets
- Have a listen to the introduction first to get an idea of what to expect

THE MORNING OF YOUR ADVENTURE DON'T FORGET TO PACK:

- a pen/pencil to complete your activity sheets
- a raincoat (it is London after all)
- water & snacks
- a phone or camera to film/photograph
- prepare to play the audio stories on your phone from our website canarywharf.com/canarystorymap/

TO FIND CANARY WHARF:

Address: Crossrail Place Roof Gardens, E14 5AR

See www.tfl.gov.uk for latest details on getting around London

DLR: Canary Wharf or Heron Quays

Tube (Jubilee line): Canary Wharf

Thames Clipper: Canary Wharf Pier

Bus: D3, D7, D8, 135, 277 and N550

By car: Canary Wharf has multiple car parks

Head to canarywharf.com/getting-here/ for more info



Canary Wharf Arts + Events

To see what else is on at Canary Wharf head to canarywharf.com/whats-on/

 canarywharflondon  yourcanarywharf

Tea Dance for Little People

» More exciting outdoor adventures and online trails around London visit tdlp.co.uk/shop

» Join our online community for family fun resources and inspiration:

 tea_dance_for_little_people   td4lp  Tea Dance for Little People

The TDLP Team:

The Canary of The Wharf is written and recorded by our storytellers Jenny Draper & Paul Rubenstein, Illustrated by Elena Juzulenaite, Designed by Francesca Grassi and Produced by Sally-Anne Donaldson

Old Flo Wharf Warrior Competition Terms & Conditions

By submitting your Old Flo Wharf Warrior task sheet completed, the entrant agrees to the T&C's stated below.

How to enter:

- › Enter our Old Flo Wharf Warrior Competition for the chance to win an Apple iPad.
- › The winning submission may also be posted on Canary Wharf owned social media.
- › The entrant must have completed all aspects of the 'Activity 6' Old Flo task. The drawing must be connected to the task and inspired by Old Flo (Henry Moore's Draped Seated Woman sculpture known as Old Flo).
- › The entry should be photographed or scanned and sent via email to OldFlo@canarywharf.com.
- › The entrant's age, first and last name along the parent/guardian's first and last name must be stated in the submission email.
- › The deadline for submissions is Sunday 31 October 2021, 5pm.
- › The entrant must have their parent/guardian's permission before entering. The prize will be awarded with the parent/guardian's involvement, please include a guardian name in the submission email.
- › Entries must fit within the box provided and follow the theme as mentioned on the task sheet.
- › It is free to enter the competition.

Judging:

- › Canary Wharf's Community team is responsible for the selection of a winner.
- › The judges will consider several factors, including originality and applicability.
- › The winner will be notified by email during November 2021.
- › In all cases, the Judges' decision is final, and no correspondence will be entered.

Prize:

- › The winning entry of the Old Flo Wharf Warrior competition will receive an Apple iPad Air for themselves.
- › In the event of unforeseen circumstances, CWG reserves the right to provide alternative prizes of equal or greater value.
- › Prize winners may be required to take part in related publicity and such participation is a condition of accepting a prize.
- › Prize winner's guardian must respond to CWG directly. The Prize can only be granted under the supervision of a parent/guardian.

Specifications and responsibilities:

- › Any entry that cannot be authenticated or is not of an acceptable quality will be disqualified.
- › The entrant declares that he/she is the sole author/creator of any text/image he/she submits.
- › The entrant must be 16 years or younger.
- › CWG accepts no liability or responsibility for entries lost, delayed, or undelivered, nor any liability for technical errors or communication failures in networks and/or internet access.