



# DISCOVER CANARY WHARF

🐦 yourcanarywharf  
@canarywharflondon

ALL THE SPACE YOU NEED TO MEET, RELAX AND RECONNECT

## Shops & Services

Find more than 150 shops, hair & beauty salons and health & wellness brands in Canary Wharf's five malls

## Eat & Drink

Grab a drink or a bite to eat at one of more than 80 cafés, bars and restaurants showcasing flavours from across the globe

## Explore & Enjoy

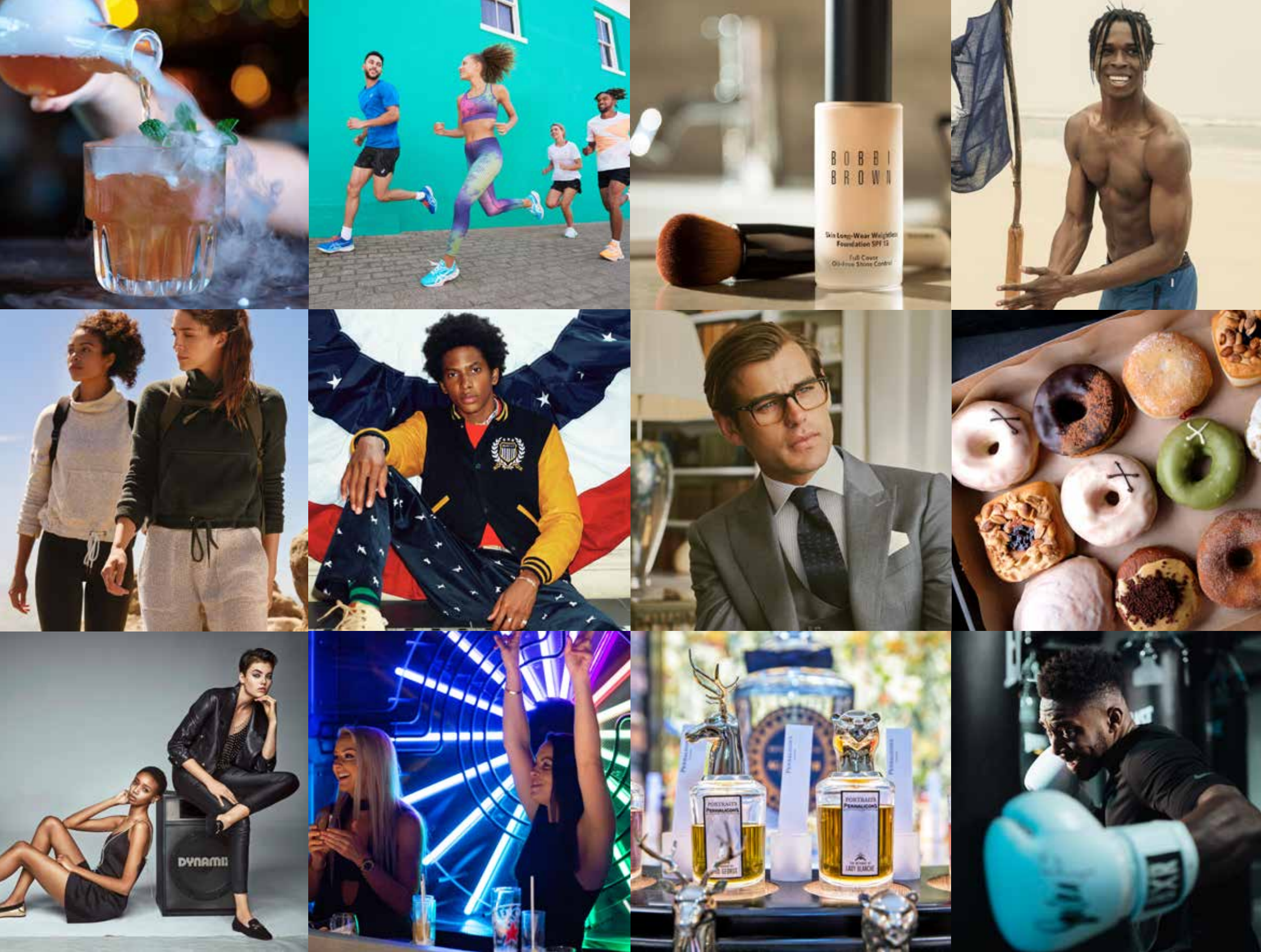
Discover London's largest collection of outdoor art, beautiful green spaces and cutting-edge entertainment venues

## A Room with a View

Choose a home by the river and discover the benefits of living in Canary Wharf's new waterside neighbourhood, Wood Wharf







Scan the QR code to view discounts and redeem exclusive offers available at

# CANARY WHARF

The Alchemist  
Crosstown  
Electric Shuffle  
Garbanzos  
Humble Grape  
Ibérica  
Lola's Cupcakes  
No.35 Mackenzie Walk  
Notes Coffee  
Obicà  
Pret a Manger  
Rainbo  
The Vurger Co.  
T4  
The Breakfast Club

YiFang  
Accessorize  
ADAM Grooming Atelier  
Asics  
Barker Shoes  
Barry's  
Bobbi Brown  
Brown's Flowers  
Calvin Klein Underwear  
Charbonnel et Walker  
Charles Tyrwhitt  
David Clulow Opticians  
David M Robinson  
Gant  
Godiva

Flexology  
Freedom Clinics  
Hackett  
iSmash  
James Shoe Care  
Jon Hala  
The Kooples  
Le Chalet Cryo  
L.K.Bennett  
City of London Dry Cleaners  
London Grace  
Monsoon  
Orlebar Brown  
Penhaligon's  
Pretty Ballerinas

Scribbler  
Sweaty Betty  
Sweat by BXR  
Rituals  
Space NK  
Ted's Grooming Room  
The Post Office  
Third Space  
Tom Davies  
Toni & Guy  
Vision Express  
Wanyoo  
Wolford



# WELCOME NOTE

Over the last few months our lives have changed in sudden and significant ways. So, too, in accordance with government guidelines, and to make our community as safe as possible, has life in Canary Wharf. During that time, our Estate has continued to evolve into far more than a place to work. As part of our ongoing commitment to make Canary Wharf as diverse and interesting as possible, we've continued to welcome new and exciting names to our neighbourhood.

If you'll be returning to Canary Wharf, this newspaper is intended to welcome you back by explaining what's new and what's changed while you've been away. If you're not so familiar with the area, we'd like to introduce our Estate and invite you to experience all it has to offer.

From a theatrical, flaming-throwing cocktail bar to a cutting-edge esports café, a host of international eateries to an ice cream parlour from one of the world's most famous gelato makers, Canary Wharf has never been such an exciting place to live and visit.

You can reach us via the Jubilee Line, Docklands Light Railway and Thames Clipper. Canary Wharf is on various bus routes and there are 273 Santander Cycle docking stations on the Estate. Alternatively, you can enjoy three hours' free parking when you spend £10 at weekends and bank holidays\*, or two hours' free parking when you spend £10 between Monday and Friday\*\*. NHS staff can apply for free parking by emailing [car.parks@canarywharf.com](mailto:car.parks@canarywharf.com).

You can access a variety of exclusive discounts and promotions in stores, bars and restaurants by scanning the QR code on the opposite page. Read on to discover the best places to socialise and shop, to exercise and explore, to live and unwind.

Welcome to Canary Wharf – a place to meet, relax and reconnect.

\* To enjoy 3 hours' free parking, simply ask for your ticket to be validated at any point of purchase on the Estate. \*\*To enjoy 2 hours' free parking between Monday and Friday, excluding bank holidays, spend £10 in Waitrose & Partners, Marks & Spencer Simply Food or Tesco Metro.

All information and offers are correct at the time of going to press. Due to changing circumstances, this may have changed after the date of publication. Please check individual websites for the latest details. Computer generated images are indicative only.

**4 What's New on the Wharf**  
From handy bike shops to tasty ice cream parlours, these are the latest openings in Canary Wharf



**6 Taste the World**  
Find flavours from across the globe at restaurants such as ROKA, Chai Ki and Obicà



**8 Raise the Bar**  
Whether yours is a pint or a G&T, there are plenty of places to grab a drink in Canary Wharf

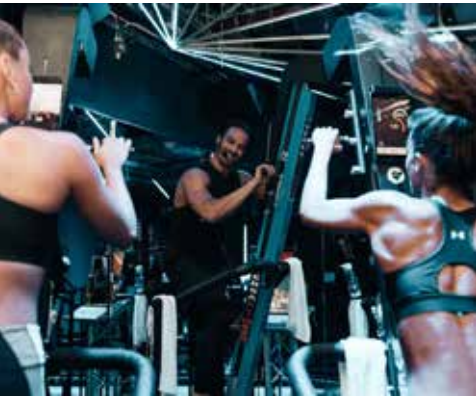
**10 Fun & Games**  
Get your game face on at Electric Shuffle and esports café Wanyoo

**12 Women's Fashion**  
AW20 style solutions from Maje, Sandro and The Kooples



**14 Make the Cut**  
The best barber shops and hair salons for sharp cuts and stylish shaves

**16 Men's Style**  
Bespoke tailoring services and luxury loungewear from Reiss, Paul Smith and Hackett



**20 Work it Out**  
What to wear to work out, whether you're a runner, spin class whizz or gym bunny

**22 Health & Wellbeing**  
The wellness therapies and health services found in Canary Wharf

**24 Where the Heart Is**  
The Waitrose & Partners services designed to help support the local community

**26 Living on the Estate**  
Inspiring homes with waterside views: where to live in Canary Wharf



**28 Parks & Open Spaces**  
Where to find outdoor minigolf, manicured landscapes and one of London's largest rooftop gardens

**30 Art on the Estate**  
Discover the capital's largest collection of outdoor installations in Canary Wharf



# WHAT'S NEW ON THE WHARF

Flaming cocktails,  
heritage recipes  
and super-speedy  
cycle repairs: what to  
expect from the must-  
visit new openings in  
Canary Wharf



## THE ALCHEMIST

Reading the drinks list at The Alchemist is like perusing a potions book in a *Harry Potter* novel. Nettles, cherry fog bubble and fireworks are among the featured ingredients, which hint not just at the flavours to come, but the theatrics, too – think dry ice, flaming cinnamon sticks and syringes filled with Szechuan sauce. Founded in 2010, in a bid to break with cocktail convention, The Alchemist is renowned for its crafty creations that span colour-changing vodka and apple concoctions to smoking whisky medleys.

In The Alchemist's Canary Wharf space, the meticulous bartenders put as much emphasis on style as they do on substance. The copper bar is where the action happens – grab a table with a view to watch the wizard mixologists make as many as seven

cocktails at a time.

'Theatre served' is The Alchemist's motto, and at the Canary Wharf bar the cocktails double up as performance art: guest favourites include the Colour Changing One, which transforms from blue to pink before your eyes, and Cherry Poppins, a gin-based cocktail topped with a cherry fog bubble.

Atmospheric lighting and views across the Wharf make the bar a suitable spot for date night, and an accompanying food menu of international cuisine gives new meaning to 'dinner and a show'. Duck spring rolls wrapped in filo pastry and 12-hour marinated jerk chicken are delicious – and as worthy of the spotlight as the leading acts.

Reuters Plaza,  
020 3794 0595



## GRAB A BITE



### PILPEL

Uri Dinay's grandfather cooked up the ultimate falafel recipe more than 60 years ago and today it lives on in his grandson's Middle Eastern restaurant. Soon to be enjoyed by hungry diners in Canary Wharf, these 100 per cent chickpea balls are packed into salads or warm pitta bread and served with vegetables and buttery houmous.

Opening in October,  
Canada Place



### COJEAN

Parisian brand Cojean specialises in healthy food made with simple, fresh ingredients. Come October, a seasonal menu of nutritious salads, acai bowls and organic, freshly-squeezed juices will be on offer, with 10 per cent of all profits going to the poverty-fighting Nourrir Aimer Donner foundation.

Opening in October,  
Cabot Place



## GET A DRIP

As one of the UK's leading vitamin companies, Get A Drip offers more than 15 types of IV drips and seven booster shots that administer high doses of nutrients straight into your bloodstream. Opening this winter, the new Canary Wharf clinic will offer shots and drips provided by GMC-registered doctors and NMC-registered nurses. Choose from a menu of hydrating, multivitamin and immunity-boosting drips.

Opening in December, Cabot Place

## BADIANI GELATO



### PAMBAN

Named after the bridge that links Sri Lanka with India, Pamban brings a slice of South Asia to London's café scene. Specialising in chai tea and coffee, the café offers more than eight different chais which are hand-brewed and loaded with ground spices and a hint of sugar – all completely free from syrups and concentrates. Visit the Canada Place branch to buy your own chai and loose leaf tea to make at home, and keep an eye on the website for details about future chai tastings and latte art classes.

Canada Place



The ice cream connoisseurs at Badiani Gelato have been whipping up frozen treats since 1932 when founder, Idilio, opened his first gelateria in Florence. One of the world's most famous gelato makers, Badiani Gelato opened in Canada Place in August, where you can try scoops of creamy gelato (including Buontalenti, a secret-recipe flavour), ice cream cookie sandwiches and Pinguini gelato lollipops.

Canada Place, 07898 304302

## NIPNIP



Founded in 2013 as a roaming repair shop, NipNip began life with an orange Vespa and a miniature toolkit and today claims to be the city's most popular bicycle repair service, servicing the bikes of more than 300 organisations across the capital. With more Londoners taking to the saddle, the new Westferry Circus store is one to add to the address book – offering same-day cycle repairs, corporate maintenance days and training sessions for those feeling a little wobbly on two wheels.

Westferry Circus, 020 7164 6409





# TASTE THE WORLD



If you’ve missed out on a holiday this year, seek out your favourite international cuisine at Canary Wharf, where you can find flavours from across the globe

## IBÉRICA

### SPANISH

Showcasing contemporary Spanish cuisine, Ibérica is arranged across two floors and features an impressive high ceiling, vintage Spanish posters and a wine-bottle art installation. Michelin-starred executive chef Nacho Manzano steers the menu, which includes chicken and seafood paella and Ibérica’s own take on tapas.

Cabot Square,  
020 3026 5118



## OBICÀ

### ITALIAN

Located in Canary Wharf’s West Wintergarden, Obicà offers the freshest traditional Italian dishes. Start your meal with an aperitivo and receive a complimentary food pairing: a taglierino with a glass of wine, finger food with a cocktail, and pizzetta with a beer.

West Wintergarden,  
020 7719 1532



## CHAI KI

### INDIAN

Nestled among the skyscrapers of Canary Wharf, Chai Ki’s Toddy Shop Bar and Restaurant is quite different from the traditional roadside drinking dens found in India – but the food is just as delicious. Visit Crossrail Place to enjoy Chai Ki’s South Indian-inspired dishes.

Crossrail Place,  
020 7516 0444



## PLATEAU

### FRENCH

For dinner with a view, French restaurant Plateau cannot be beaten. Ask for a table by the window to make the most of views over Canada Square Park. Those visiting at the weekend can enjoy the brunch menu, with delicious dishes and bottomless bubbly.

Canada Place,  
020 7715 7100

## WHARF KITCHEN

BRINGING STREET FOOD INDOORS, WHARF KITCHEN IS A HUB OF INTERNATIONAL FLAVOURS, FROM CARIBBEAN JERK CHICKEN TO GREEK SOUVLAKI GYROS

Located in Jubilee Place, Wharf Kitchen brings together an eclectic mix of world flavours all within a vibrant market hall. Tapping into the trend of kerbside cuisine, the marketplace is street food-inspired, with six vendors offering different specialties. For authentic home-cooked jerk chicken, don’t miss Mama’s Jerk. There are fiery wings, slow-cooked oxtail and chicken wraps, as well as vegetarian, vegan and fish options, all loaded with Mama’s signature spice.

*“Wharf Kitchen brings together an eclectic mix of world flavours”*



### MUST TRY

## ISLAND POKÉ

### HAWAIIAN

Inspired by the traditional poké served in Hawaii, Island Poké specialises in fresh bowls of raw fish, rice and bright vegetables. Try a house bowl or build your own – there are 50,000 combinations to choose from.

Crossrail Place,  
020 3982 0015



At The Athenian, meanwhile, souvlaki and gyros fly the flag for the founders’ home nations of Greece and Cyprus, while Rainbo celebrates Japan’s favourite street food. Tuck into delicious gyoza dumplings, katsu and hirata bao buns.

Those dreaming of sunshine should visit Venice Beach by way of Canary Wharf’s Ahi Poké, a Californian-inspired poké brand where seasonal rainbow vegetables and responsibly-sourced raw fish are served Hawaiian-style. Another taste of America can be found at Bird, where the signature fried chicken and waffle combo is inspired by the Deep South. Try yours with lashings of maple syrup.

If you’re vegan, or a meat eater looking to try something new, don’t miss The Vurger Co., where plant-based patties are served with vegan fries, almond or soya milk shakes and mac ‘n’ cheese.

What’s more, this autumn Wharf Kitchen will welcome newcomer Biang, which combines Chinese and Middle Eastern flavours to recreate traditional dishes found in the city of Xi’an. Look out for this new eatery, opening in autumn.

## JAPANESE

From sushi to sake: where to eat Japanese food in Canary Wharf



### ROKA

Specialising in ‘robatayaki’ cuisine, ROKA’s diverse menu is led by fresh sushi, rice dishes and tempura, as well as sizzling meats and fish from the robata grill. Book a table in the The Park Pavilion restaurant at the weekend to enjoy a three-course brunch menu, complete with free-flowing red and white wine pairings.

The Park Pavilion,  
020 7636 5228



### STICKS ‘N’ SUSHI

Dine under paintings by the brilliant Olise Kjærgaard while enjoying a diverse menu and views of the Quayside at Crossrail Place at Sticks ‘n’ Sushi. The restaurant serves traditional Japanese sushi and yakitori sticks from the grill. A low-lit, contemporary setting, Sticks ‘n’ Sushi also makes for an excellent venue for special occasions.

Crossrail Place,  
020 3141 8230





#### THE IVY IN THE PARK

The Ivy in the Park is a sophisticated space built in a standalone and sustainable building on the corner of Canada Square Park. A charming outdoor terrace is the perfect spot from which to watch the world go by, cocktail in hand. Try The Ivy Royale, a signature Kir Royale and Beefeater gin concoction infused with hibiscus and rosewater. For special occasions, consider booking the private dining room, which is available to hire for breakfast, lunch and dinner.

Canada Square Park,  
020 3971 7111

**From pints in the park to wine by the waterfront, these are the best places to grab a drink in Canary Wharf**



#### THE GRANDSTAND BAR

Guests at Canary Wharf's The Grandstand Bar are known to spill out onto Canada Square Park, gin and tonics in hand. This year, circles on the lawn are in place to keep guests socially distanced, but the relaxed vibe and delicious drinks are still very much present. Pints of beer, bottles of bubbly and wine are on the menu, along with soft drinks and Pimm's on tap.

Canada Square Park,  
020 7537 6565



#### BREWDOG

Independent Scottish brewery BrewDog began with two friends and a shared passion for craft beer, and has grown to include 78 bars worldwide. The Canary Wharf spot is the brand's first in the area, and naturally there's a beer to mark the milestone: alongside BrewDog classics such as Punk IPA and Dead Pony Club, the drinks menu includes Hop Exchange, a draft beer for which the price fluctuates in line with the FTSE 100.

Churchill Place,  
020 7513 2417



*"On 'Retail Mondays' at Humble Grape, guests can drink-in at takeaway prices"*

#### THE PARLOUR

Overlooking Canada Square Park, The Parlour has a suitably nature-inspired décor to match its verdant surroundings. Grab a drink in the conservatory lounge, toast to good vino in the intimate wine area, or test your skills with the shaker at The Parlour's mixology masterclasses, where you can learn to make your very own cocktail.

The Park Pavilion,  
020 7715 9551



#### NO.35 MACKENZIE WALK

No.35 Mackenzie Walk is an atmospheric spot on the waterfront, located just a stone's throw from the Jubilee Line. There are drinks to suit all tastes – including Seedlip options for non-drinkers – but it's the cocktail list that steals the show: take your pick from blood orange negroni, mango spritz and hot gin and gingerbread, to name a few. Don't miss the bottomless brunch at the weekend, served with your choice of prosecco, mimosas or mojitos. Saluti!

29-35 Mackenzie Walk,  
020 8059 8881



#### HUMBLE GRAPE

At Humble Grape's waterfront wine bar, restaurant and bottle shop in Canary Wharf, a number of exciting offers take place every week – on 'Retail Mondays' guests can drink-in at takeaway prices; on 'Tasting Tuesdays' enjoy a mini wine tasting of four wines, with a new theme each week; and on 'Bottomless Saturdays' there's a tasty bottomless brunch with a choice of bubbles, red or white wine.

18-20 Mackenzie Walk, 020 3985 1330





# FUN & GAMES



## ELECTRIC SHUFFLE

### For all the bright sparks

ELECTRIC SHUFFLE HAS REOPENED, OFFERING GREAT FOOD AND A REVAMPED RETRO HOBBY

Like jukeboxes, Polaroids and vinyl, the last few years has seen shuffleboards get the hipster treatment. The London Shuffle Club was founded in 2016 to much success, and launched its souped-up ‘electrified’ version on North Colonnade last year.

Shuffleboard has a rich history that spans hundreds of years and two continents. In the most common version of table shuffleboard, players compete

to outscore their opponents by sliding weighted pucks down a beautiful wooden block into a scoring area at the opposite end of the table.

Electric Shuffle has taken a lightning rod to the traditional game – using vision technology, which identifies the exact location of the pucks on the table. This electric version automatically counts the score and seamlessly guides players through three unique games via an interactive screen.

The Canary Wharf branch is uber-stylish. Decked-out with retro switchboards, antique clocks and repurposed barometers, the Ellis Design Studio-imagined space is inspired by the work of inventor and

electrical engineer Nikola Tesla, whose futuristic approach is channelled through a combination of Art Deco and industrial references.

While Electric Shuffle tends to be filled with groups of friends, multi-generational families and colleagues kicking back in the evenings, it’s also an underrated spot for lunch, offering an array of light bites and vegetarian options. There’s also a popular weekend brunch, where the gaming is accompanied by paddle board pizzas, Prosecco and a DJ set.

*Cabot Square,  
North Colonnade,  
020 8059 4163*

From electrified shuffle boards to esports studios, there’s plenty to keep you entertained in Canary Wharf this autumn



### Are you game?

PLUG IN AND PLAY AGAINST GAMERS FROM ALL OVER THE WORLD AT ESPORTS CAFE WANYOO

Established in 1998, Wanyoo is the largest esports gaming chain in Asia, and its Crossrail Place studio is the brand’s third outlet in the UK. Putting a new spin on a cyber café, Wanyoo allows gamers to pit their skills against fellow players from across the globe using the best professional esports equipment. It has garnered more than 16 million members worldwide, securing partnerships with *League of Legends* and *Dota 2* as a result. Xboxes, PCs and PS4s are at your disposal, with more than 50 games preloaded on each – *Call of Duty*, *FIFA* and *World of Warcraft* among them. Between levels, refuel on the café’s wide selection of traditional Chinese snacks and drinks, such as braised pork and rice, chicken curry and bubble tea.

*Crossrail Place*



## WANYOO

CEO OF WANYOO, ZHAORONG CHEN, EXPLAINS HOW THE BRAND IS WELCOMING NEW AND OLD MEMBERS BACK TO ITS BASE IN CROSSRAIL PLACE

“Wanyoo is a place where everyone can enjoy themselves and we have created a platform that can even help gamers turn their hobbies into a career.

We provide our members with the opportunity to connect with professional gamers, professional esports

organisations and gaming associations in the UK.

In the future, we will also be introducing more console games and even board games to appeal to customers from all ages and backgrounds.

In response to the pandemic there are new procedures in place: we are checking all customers’ temperatures, asking everyone to sanitise their hands and surfaces and to wear a mask. We are also ensuring customers keep a safe social distance from each other.”

### ONES TO WATCH



#### NO TIME TO DIE

Bond has left active service and is enjoying a tranquil life in Jamaica. His peace is short lived when his old friend Felix Leiter from the CIA turns up asking for help. The mission to rescue a kidnapped scientist turns out to be far more treacherous than expected.



#### DAVID ATTENBOROUGH: A LIFE ON OUR PLANET

David Attenborough reflects upon the defining moments of his lifetime as a naturalist and the devastating changes to the planet he has witnessed.



#### THE KING’S MAN

The third film in the Kingsman series, this prequel stars Ralph Fiennes. As a collection of history’s worst tyrants and criminal masterminds gather to plot a war to wipe out millions, one man must race against time to stop them.

*For the latest film listings, visit [everymancinema.com/canary-wharf](http://everymancinema.com/canary-wharf)*



### On the big screen

WHETHER MAINSTREAM, INDEPENDENT OR CLASSIC FILMS ARE YOUR THING, HEAD TO CROSSRAIL PLACE FOR A LUXURY CINEMA EXPERIENCE

Sticky floors and uncomfortable chairs are the things of cinemas past – Everyman Cinema has redefined the movie experience, with sink-in sofas and refreshing drinks and snacks on hand. For those who’ve missed watching the latest films on release, the Everyman in Crossrail Place will be a must-visit this autumn.

The much-anticipated James Bond film *No Time to Die* is being released this November, while *Kingsman* fans

can look forward to the third installment in the series, and musical lovers the remake of *West Side Story*.

Special events, film launches and a diverse calendar of live satellite broadcasts are also being regularly shown – visit the website for more details.

Social distancing measures are, of course, in place with more space between seats and screens at reception and on tills. Cinema goers will also be encouraged to order food and drinks directly from their seats.

Hosting an event? Each of the three screens at Crossrail Place can be privately hired for special occasions – call 020 3145 0502 or email at [events.canarywharf@everyman.co.uk](mailto:events.canarywharf@everyman.co.uk) for more information.

*Crossrail Place,  
0872 436 9060*

## EVERYMAN CINEMA



# WOMEN'S FASHION

## New season looks from the likes of Sandro, The Kooples, Claudie Pierlot & COS



### CLAUDIE PIERLOT

Claudie Pierlot brought its own brand of Parisian chic to Canary Wharf in 2019, joining sister brands Maje and Sandro in Jubilee Place. Founded in 1984 for “the women of Paris”, Claudie Pierlot was inspired by its eponymous founder’s free-spirited nature. “I don’t like showing off or trying to be seductive,” she said. “I’m always myself. I’ve always had a carefree attitude and a lust for life.” This translates in the AW20 collection; dubbed Back In Town, the new range riffs on Claudie Pierlot’s androgynous style, with sharp tailoring, leather jackets and tiger print knits in fiery orange hues. Designed to carry you through the tricky transeasonal phase at the beginning of autumn, each piece can be worn alone now and layered together later when the temperature dips. The only style rule? Be yourself.

Jubilee Place,  
020 7513 2490

*“Claudie Pierlot was inspired by its eponymous founder’s free-spirited nature”*

### COS

Throwing the spotlight on a diverse community of creatives, COS’s AW20 New Perspectives campaign, shot by photographer Jack Davison, celebrates the brand’s passion for contemporary culture. From ballet dancer Isaac Hernández to actress Sharon Alexie, the campaign focuses on 15 individuals who are united by their strong, forward-thinking values and ideas. COS’s AW20 collection, which is available at Canary Wharf’s Jubilee Place store, complements the mood: classic shapes redefined as contemporary pieces, made using innovative fabrics and designed with longevity in mind.

Jubilee Place,  
020 3426 7590



## ACCESSORIES

The finishing touches to your AW20 wardrobe



Felt Fedora, £60, Reiss, Cabot Place & Jubilee Place



Tortoiseshell Sunglasses, £135, Bimba Y Lola, Jubilee Place



Brighton Resin Necklace, £85, L.K. Bennett, Jubilee Place



Catroux Loafers, £170, Kate Spade New York, Jubilee Place



Tabby Bag, £350, Coach, Cabot Place

### THE KOOPLES

Blondie and David Bowie, the great icons of the past century, were the calling points for The Kooples’ AW20 collection: two musicians, rebels and freethinkers for whom style and attitude went hand-in-hand. For the women’s collection, this means a seductive monochrome colour palette with rock ‘n’ roll metallic, sequin and lurex detailing, velvet blouses in burnt orange and burgundy shades and animal print dresses in autumnal hues.

At the Canada Place boutique, The Kooples’ team is on-hand to help you slip new season staples into your wardrobe. Call the shop to book an appointment for a custom in-store experience, and allow the resident stylists to prepare a selection of looks tailored to your taste.

Canada Place,  
020 7715 5378



### SANDRO

Sandro recently announced its AW20 collection would be the first to offer inclusive sizing, with all clothing available in sizes 6 to 14 in all stores, including at its Jubilee Place boutique. The range taps into the brand’s French aesthetic, with ruffle collar knits, tailoring and tweed jackets.

Jubilee Place,  
020 7718 8683



### MAJE

Inspired by Paris’s Le Palace theatre and the rock stars who played there during the 1980s, Maje’s AW20 collection is all about having fun. Call the Jubilee Place store to book a personalised shopping experience with a member of the Maje team, either in person or via video call.

Jubilee Place,  
020 7718 8779

### Loungewear

## CALVIN KLEIN UNDERWEAR

The ultimate uniform for lazy duvet days

Cabot Place, 020 7519 6668



CK One  
Pyjama Set, £60



CK One  
Bralette, £28



Lounge Zip-Up  
Hoodie, £65



CK One  
Thong, £16



# MAKE THE CUT

The best hair salons and boutique barber shops for a feel-good, confidence-building tidy-up



ADAM Grooming Atelier has become a staple in the capital's grooming industry, despite launching just five years ago. Putting a luxury spin on a traditional barber shop has earned the brand a dedicated fanbase, as well as several accolades at the prestigious World Spa Awards — it won World's Best Male Grooming Salon Brand last year, and is shortlisted again for 2020. Visit the Cabot Place barbers for award-worthy haircuts and slick wet shaves, such as the Director's Cut, a full-serviced style treatment, or the Face Time, a traditional wet shave or beard trim. Keep an eye out for the brand's debut collection of hair and grooming products, too, which launch this autumn.

Cabot Place,  
020 3918 9900

## ADAM GROOMING ATELIER

The barber shop branch of British fashion brand Ted Baker, Ted's Grooming Room launched in 2010 and now has 19 locations in London — two of which can be found in Canary Wharf. Combining traditional Turkish grooming techniques with the barber shop heritage and high-fashion of London, Ted's Grooming Room is a sophisticated space designed for the discerning gentleman. At the Canary Wharf salons in Cabot Place and Churchill Place, where the area's maritime roots are reflected in the interior design, sharp haircuts, beard trims and eyebrow threading are on offer. Ask for The Full Ted Service to receive your choice of haircut, as well as a shave or beard design, ear flaming and a relaxing hot towel treatment and head massage. Both of the Canary Wharf salons are accepting bookings and walk-ins.

Cabot Place & Churchill Place,  
020 3397 9966

## TED'S GROOMING ROOM



## NICHOLSON & GRIFFIN



Speedy, professional cuts are the order of the day at Nicholson & Griffin, where barbers have been snipping the hair of city workers since 1990. Merging traditional barber shop techniques with contemporary style, the shop offers hot towel shaves, dry, wet and clipper cuts, beard trims and several colour services.

Jubilee Place,  
020 7512 9890



## TONI & GUY



London Fashion Week went digital this year — but Toni & Guy continued to celebrate 15 years as its official partner. In that time, the hairdressing brand has created looks for more than 100 fashion designers, working backstage with both long-established and emerging British talent such as Roksanda Ilincic, JW Anderson and Mary Katrantzou. That high-fashion flair for hair can be found at Toni & Guy's One Canada Square salon, where guests are invited to book a complimentary style consultation. The salon is home to top stylists Carl McCaffrey and Nina Beckert, both of whom have won London Hairdresser of the Year at the British Hairdressing Awards and were shortlisted for the UK's Most Wanted Look of the Year.

One Canada Square,  
020 7987 6222



## SEANHANNA

Canary Wharf's seanhanna reopened its doors this summer and the resident skilled stylists are all back working with their clients — offering the salon's full range of cut and colour services, as well as the ever-popular Brazilian blow dry and a selection of products and treatments from the likes of Shu Uemura, Kérastase and Redken. "Our salon is back to its energetic self, and our clients have been telling us they feel pampered and safe when they have visited," said Punam Tailor, Director of the Jubilee Place salon. "It is fabulous to welcome regular and new clients."

Jubilee Place,  
020 7513 2660



AW20 Trends

## JON HALA



Jon Hala opened his eponymous hair salon in Jubilee Place last year, bringing more than 25 years of hairdressing experience to the Estate. An expert in precision technical cutting, hair extensions and keratin smoothing treatments, Jon has snipped and styled the locks of celebrities such as Kate Moss, Elle Macpherson and Sigourney Weaver. Here, he shares his top hair care tips and trends for AW20.

**What are the top colour trends for the season?** As it's now autumn, we are looking at embracing those warm chestnut brown colours. There is also a new term, The Bronde, which, as the name suggests, is a combination of brown and blonde. Balayage, ombré and root-smudging are as popular as ever, which helps us hairdressers blend all the lockdown home colouring attempts.

**Should we keep our cuts simple and low maintenance?** For the time being, yes, I think so. Textured bobs are a good option as is the natural wave look. The sleek cut with the big blowdry and root volume is difficult to manage at home — though of course now salons are open again it is an option.

**What about for men?** Beards of course became popular again — it feels like they never went away. However, it's important to get the right haircut to go alongside that beard. My male clients say they were very frustrated with the 'in-between' look but some have also embraced their new hair length.

**What's new in your salon?** We are starting our season with the good news that we are a Wella UK Colour specialist regional winner 2020. We've also found that the biggest trend of all is actually not hair based. Our in-house eyelash specialist Violeta is busier than ever using cashmere to create the Russian eyelash look. It's all about making a statement with your eyes, so they stand out over those annoying — but necessary — facemasks.

Jubilee Place,  
020 7719 1828



Bespoke boots, made-to-measure tailoring and luxe loungewear: these are the menswear brands and services to know about this season

# MEN'S STYLE



## REISS

For those who spent lockdown in loungewear, Reiss's new collection will prove a hit. As we return to (the new) normal, this capsule range of casual clothing is on-hand to ease the sartorial transition: soft-knit hoodies teamed with pleat-front trousers (the Brighton style has an elasticated waist); silky polo neck jumpers under lumberjack coats, and denim jackets thrown over white Oxford shirts. At the Jubilee Place boutique, virtual and in-store one-to-one styling appointments can be arranged with the Reiss team.

Jubilee Place,  
020 7519 6176

## PAUL SMITH

Celebrating 50 years in business this year, Paul Smith makes a nod to the 1970s in his AW20 collection. Alongside Harrington jackets and jaunty shirts are the designer's signature suits reimagined in loose silhouettes, with added length for a modern, minimal feel. For a tailored fit, ask about the adjustments and alterations service in the Cabot Place store.

Cabot Place,  
020 7519 6819



## HACKETT

Hackett bridges the gap between smart and casual and in the Cabot Place store you will find attire to suit both dress codes: rugby shirts, Harrington jackets and jeans can be found alongside shirts, suits and overcoats. There's a made-to-measure cufflink, tie and tailoring service, too.

Cabot Place,  
020 7513 0400



## POLO RALPH LAUREN

Polo Ralph Lauren's signature preppy style can be found at the Cabot Place store, where the brand's 'icon' pieces, such as polo and Oxford shirts, are sold alongside new season styles. To make your visit easier, the boutique offers complimentary personal styling and tailoring appointments, as well as same-day office delivery and a gift concierge service.

Cabot Place,  
020 7519 1025



## CROCKETT & JONES

For more than 140 years, Crockett & Jones has been manufacturing shoes from its factory in Northampton, whether they be the brand's signature Oxfords or these new Ross and Shannon boots. The cobbler's tricks of the trade are passed down to the shop floor, where the team can help organise repairs to tired soles or create a bespoke design. Ask in-store at Cabot Place for more information.

Cabot Place,  
020 7715 9210



## BOSS

The suitably-named Generations collection from BOSS sees the brand's signature pieces reimagined for the contemporary customer. Modern suits, fluid jersey pieces and elevated outerwear pairs the brand's tailoring heritage with new season aesthetics, creating a collection that works for all ages, backgrounds and walks of life. BOSS fans should consider signing up to the Hugo Boss Experience, for which you can receive benefits and personal shopping services in store at Cabot Place.

Cabot Place,  
020 7715 5302

## Licence to Thrill

### ORLEBAR BROWN X JAMES BOND

A limited-edition collection marks the launch of the latest 007 film

With the latest James Bond movie *No Time to Die* finally set to hit our screens this November, Orlebar Brown has released a capsule collection inspired by iconic looks from the past 24 films in the franchise. Polo shirts, jackets, espadrilles and swimwear reference outfits worn in *Dr. No*, *Thunderball* and *Diamonds are Forever*. Team your chosen pieces with Bond's signature Martini — shaken, not stirred.

Jubilee Place,  
020 7513 1157



Thunderball Linen Shirt,  
£195, Orlebar Brown



Moonraker Knitted Half-Zip Pullover,  
£295, Orlebar Brown



# FIGHTING FIT



## Autumn gains at Third Space Canary Wharf

FIVE REASONS TO JOIN EUROPE'S LARGEST LUXURY HEALTH CLUB:

1



### GET SCHOOLED

If you don't know your EMOMs from your AMRAPs, it's time to sign up to one of 300 weekly classes at Third Space Canary Wharf. Whether you're looking for intense training or mindful yoga, learn how to make fitness fun with the help of a team of award-winning instructors.

2



### MAKE A SPLASH

Enjoy the ultimate clean swimming experience in Canary Wharf's 23-metre pool, which is purified using the latest UV technology. It works in the same way as intense sunlight to not only purify the water, but ensure it's kinder on the skin and better for the environment.

3



### REACH NEW HEIGHTS

You might not expect to see a sheer rock face in the middle of the city, but Third Space is home to a 13-metre-high indoor climbing wall. Change up the way you exercise with this course's six auto belays and 25 routes from beginner to advanced levels.

4



### TAKE ON THE LONGEST YARD

Spanning 7,500 sq ft, The Yard is a functional training and combat space complete with workout areas for cross-training, athletics and combat. Build core strength with the custom-built athletic rig and more than 110 pieces of strength-training apparatus.

5



### GO FOR A SPIN

Feel pumped and prepped for the day ahead with a cycle session in the 85-bike Canary Wharf studio. Atmospheric lighting and a surround-sound experience will keep you motivated as you track your progress using in-depth performance data.

## ON YOUR BIKE

The Canary Wharf cycle stores keeping you in the saddle



### EVANS CYCLES

Evans Cycles is a one-stop bicycle shop for all cycling abilities, whether you're a foldable Brompton newbie or a seasoned road bike sprinter. The store has more than 100 bikes on display and can help kit you out with all the latest gear. There is also a fully-equipped workshop manned by expert mechanics to help with anything from a puncture to a comprehensive check-up.

South Colonnade,  
020 7516 0094

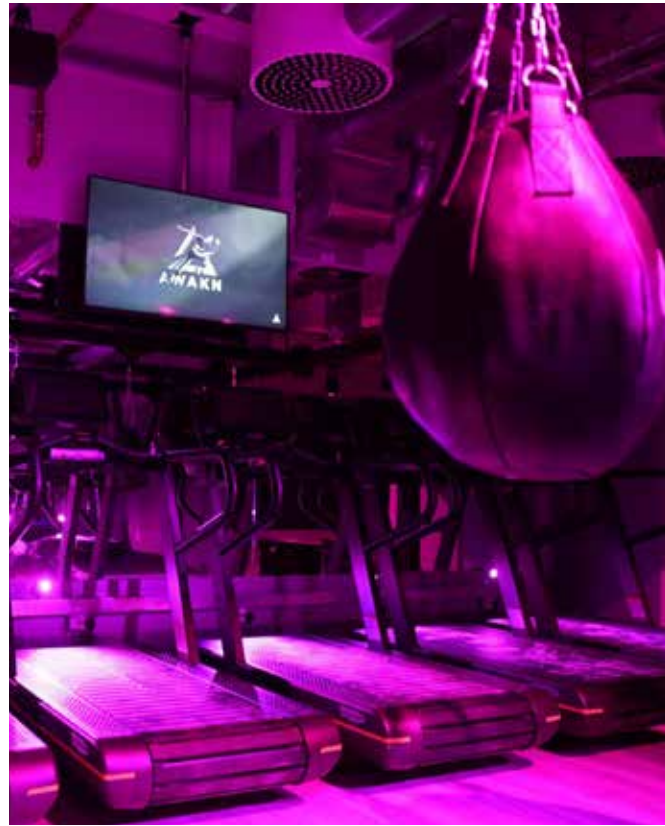


### NIPNIP

Wouldn't it be nice if there was a service to sort all your bike woes without having to wait around? Well, that's exactly what NipNip aims to do with its servicing system. You can hand in your bike in store, get it fixed at home, or have it taken away and returned as good as new. Opt for the former and for a limited time only you can receive 20% off bike servicing at the Canary Wharf store.

Westferry Circus,  
020 7164 6409

## The best calorie-burning classes in Canary Wharf



### AWAKN

Awakn is a luxury wellness facility offering strength, cardiovascular, boxing and functional classes. Those short on time should try the express workout; you only need 40 to 50 minutes to burn up to 1,000 calories, but you'll need to get grafting – the gym's signature combination of boxing, lifting and running is no easy feat. Visit the website to discover Awakn's new timetable and class concepts.

Jubilee Place,  
020 7719 1786



### SWEAT BY BXR

The VersaClimber is a 75-degree vertical rail with pedals and handles that mimics the natural motion of climbing and allows for a full-body cardio workout with less impact. Sweat by BXR, the fitness studio inspired by stakeholder and champion boxer Anthony Joshua, has developed this unique machine to burn more calories per minute than any other apparatus – up to 800 calories in a 45-minute session – while strengthening muscles. Unlike treadmill or spin classes, this training minimises unnecessary stress or trauma to your body.

Crossrail Place,  
020 7719 1970



### BARRY'S

Work hard, play hard is the mantra at Barry's – and why not do both at the same time in the Red Room, where signature red lights, mirrors, hardcore beats and Barry's expert trainers work together to shock your body into a serious workout, with a mix of treadmill and

strength training exercises. Get ready to burn more than 1,000 calories during a single 60-minute session.

Crossrail Place,  
020 3928 2804

Zip up your Lycra, order your energy shake and brace yourself as Canary Wharf's training experts put you through your paces



TOP TRAINERS



ASICS

Fewer layers of material make the Dynablast a light and breathable trainer, while innovative flytefoam technology in the sole will add a spring to your step.

£110, Jubilee Place



JD SPORTS

Part of Nike's carbon- and waste-free initiative Move to Zero, these Air VaporMax2020 Flyknit trainers are made using leftover materials.

£190, Canada Place

ASICS

Asics is renowned for its running shoes, and is dedicated to helping you find the right fit. At the Jubilee Place store, the Asics Foot ID service measures your foot size, running technique and body composition to help you find the right shoe for you.

Jubilee Place,  
020 7516 9162



LULULEMON

As suitable for sports as they are for Netflix marathons, these T.H.E. Shorts (£58) by Lululemon feature an 'Out of Mind' liner made from quick-drying mesh fabric, a no-bounce phone pocket and a built-in pouch for support. Pack in the Command Day Backpack (£128) in a matching print.

Jubilee Place,  
020 7101 8835



JD SPORTS

Tennis, basketball, running, boxing, rugby – name a sport and JD Sports will cater to it. Find the latest athleisure launches from Nike, Adidas and Under Armour at the Canada Place store.

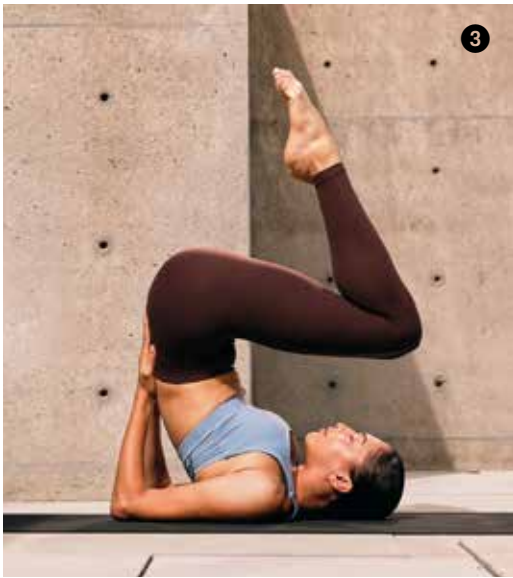
Canada Place,  
020 7715 9644



Whether you're a spin class addict or a Pilates pro, this is all the kit you'll need for a seamless workout



1. Under Armour Charged Pursuit 2 Trainers, £50, JD Sports, Canada Place
2. 4" Hotty Hot Short II, £48, Peloton, Cabot Place
3. Align Pant, from £69, Lululemon, Jubilee Place
4. Free to Be Elevated Bra, £38, Lululemon, Jubilee Place
5. Power 7/8 Leggings, £75, Sweaty Betty, Jubilee Place



IMPROVE YOUR PERFORMANCE WITH THE LATEST ATHLEISURE LAUNCHES FROM THE LIKES OF LULULEMON AND SWEATY BETTY

For those needing a kick to get back to the gym, sartorial motivation proves a worthy aid. Start off on the right foot with Under Armour's Charged Pursuit 2 trainers from JD Sports, which are fitted with engineered mesh for breathability and an outsole designed to mimic the grip of car tyres. Team with Peloton's sunshine yellow shorts for the ultimate colour clash; they are lightweight and fitted with strategic pockets.

Yogis should consider Lululemon's Align collection, which is sold in the Jubilee Place store. Made with the brand's own buttery-soft Nulu fabric and Lycra for added stretch, these minimal leggings are designed to help you move freely, no matter how advanced the vinyasa flow. Wear with the brand's new Free to Be Elevated bra, a soft-padded bra made with low-impact workouts in mind.

The ultimate all-rounder can be found at Sweaty Betty: the brand's signature bum-sculpting Power 7/8 leggings have an adjustable waistband, quick-drying fabric and handy side and back pockets.



The Machine  
PELOTON

Founded in 2012 with time-poor fitness fanatics in mind, exercise bike and video subscription service Peloton brings the best of boutique spin classes into your home. The stationary bike is equipped with an interactive screen, which gives users access to an on-demand library of workouts, as well as 14 live sessions a day led by Peloton's fitness

instructors. There are classes for every ability, with workouts filtered by class type, length, intensity level, instructor and even music taste – choose from playlists from the likes of Coldplay, Lady Gaga and Lizzo, among others. Spin not your thing? Sign up to the Peloton app, and stream more than 10 different types of workout on demand. A progress

tracker is on hand to help you hit your fitness goals.

Peloton Bike, £1,995; Peloton Digital Membership, £12.99 a month; Peloton All-Access Membership, £39 a month.

Cabot Place,  
020 3974 2410





# HEALTH AND WELLBEING

DISCOVER CANARY WHARF



## LE CHALET CRYO

‘If it ain’t broke don’t fix it’ is a maxim that can be easily applied to the cryotherapy sessions at Le Chalet Cryo. Cold therapy dates back to the Egyptians, who used the ancient techniques of cold submersion to treat injuries. These days a whole-body approach can help heal a host of ills from sleep problems to muscle inflammation. Loved by premier football clubs and athletes across the globe, just three minutes of -90°C dry air in the Le Chalet Cryo’s electric cryotherapy chamber will leave you rested and rejuvenated.

Canada Place,  
020 7513 2974

## FLEXOLOGY

Working from home without the usual office chair support can lead to a world of pain. So it’s a relief to hear that sister duo Anna Epeykina and Alina Musienko have set up the UK’s first assisted stretching studio in Canary Wharf. Each one-to-one session is led by a ‘flexpert’ who uses innovative flexology techniques to recalibrate the body. Through a tailored 15, 25 or 55 minute session, therapists are able to target whatever is bothering you, from stooped shoulders to lower back pain. Not only does it improve mobility and relieve tension, the techniques release endorphins to improve your mood, too.

Canada Place,  
020 3827 0370



## A HELPING HAND



## FREEDOM CLINICS

The chiropractic and musculoskeletal specialists at Freedom Clinics know how important it is to fit in your health priorities around everyday life. The Canada Place clinic offers flexible appointments seven days a week, so you never have to feel pressured to keep a consultation. It’s also best not to leave seeing someone until it’s too late — the clinic specialises in preventative treatments so you can stop ailments in their tracks.

Canada Place,  
020 3197 9100



## BABYLON HEALTH

Now is definitely not the time to be hanging around waiting rooms or queuing up for medication — and Babylon knows this. The Babylon GP at Hand app gives you access to a doctor within minutes on your phone so you can check symptoms, track your fitness and keep on top of your mental health. Then, when it’s time, you can pop into the Canary Wharf NHS clinic to be seen by a doctor in person just when you need it.

Cabot Place,  
0330 808 2217



## PURE SPORTS MEDICINE

For anyone who’s spent the past few months experimenting with a new sport — Pilates in the kitchen or road testing a new racing bike — you might have landed yourself with a few sports-related problems. This is where the experts at Pure Sports Medicine step in. With a high-tech clinic, gym space and Pilates studio at their fingertips, the world-class team of physios, clinicians and consultants can put you back on the right track.

Cabot Place,  
020 3595 1234

*“There’s never been a more opportune moment to look after ourselves”*



## SK:N

The skin might be the largest organ in the body but it’s often the last to get the attention it deserves. This balance is ready to be redressed by the dermatology experts at sk:n, where you can choose from more than 200 clinically proven treatments. From removing that unwanted tattoo you got last summer to clearing severe acne problems, there’s no problem great or small that these specialists can’t tackle.

Canada Place,  
0333 060 5914



## BUPA HEALTH & DENTAL CENTRE

There’s never been a more important time to look after ourselves, whether that’s with general check-ups, sports consultations or some cosmetic retouches. At Bupa’s flagship Health and Dental Centre in Crossrail Place, and Bupa Dental Centre in Columbus Courtyard, the teams are on hand to help with general, cosmetic and specialist dentistry, private GP appointments, travel and flu vaccinations, health and fitness assessments and physiotherapy.

Crossrail Place, 020 7256 2462,  
Columbus Courtyard, 020 3627 6298

Canary Wharf is the new leader in wellbeing therapies. Restore your body in Arctic temperatures or chat to the city’s best clinicians with the tap of a button



From Waitrose's handy services to inspiring interiors stores, Canary Wharf has all you need to make your house a home



TAILOR YOUR SHOPPING EXPERIENCE TO SUIT YOUR NEEDS WITH WAITROSE & PARTNERS' ON-HAND SERVICES, FROM CLICK AND COLLECT TO SPEEDY DELIVERY OPTIONS

Grocery shopping needn't be a chore; at Waitrose & Partners in Canada Place, the store's specialist team is on hand to help. From butchers to cheesemongers, the shop's partners are trained to a high level in their field of expertise.

Shop for your fresh products and be served by the store's trained meat, fish, deli and cheese specialists at dedicated counters, or speak with an expert in the wine department. You can even get your caffeine fix at the in-store Nespresso boutique, where you can buy the latest pods and machines, or order your products on the Nespresso website and collect them from Canada Place.

A number of seamless services have been introduced to help support you with your shopping. The grocery click and collect service from waitrose.com allows you to shop

and pay for your groceries online, and collect them from Canada Place at a timed slot. There's also the option to click and collect John Lewis purchases; order online before 4pm and collect in-store the next day.

The newly-launched You Shop, We Deliver service allows customers to buy their groceries in-store and have them delivered at a pre-booked time convenient for them.

There's also The Rapid Service, through which you can choose up to 25 of your favourite Waitrose & Partners items and have them delivered to you within two hours. The minimum order is £20 and there is a £5 delivery charge per order. Both services deliver to certain parts of the surrounding area — ask in-store or check online to see if the Canada Place branch delivers to you.

## IN-STORE INSIGHT



*Waitrose & Partners' deputy store manager Alice Brosnan-Guers explains how the store strives to support its local community*

**How long has Waitrose been at Canary Wharf?** This year we celebrate 18 years at Canary Wharf and we are proud to be the largest Waitrose store in the UK. We have a diverse group of 550 partners — we are called partners rather than employees as we are all co-owners of the company.

**How has the store and its staff helped the local community during the pandemic?**

Maintaining a strong connection with our customers has been vital. We established a vulnerable shopping service direct from the branch where customers could telephone or email in their order. We also made frequent donations to our local NHS trusts as well as continuing to operate our regular services to support our local food bank.

**How do you support local suppliers?** We recognise that it's important to support local businesses. The Canary Wharf store (and many others) stocks Meantime Beer, brewed just across the river from us in Greenwich. Our 'Best of British' cheese selection box supports local artisan cheesemakers and other local products include honey and artisan bakery lines.

**What else is available at the Canary Wharf store?** Our upper floors house fashion, homewares, electrical items and various other categories. Now, in order to make the shopping experience easy and simple, customers can check if an item is in stock by searching for the product on the John Lewis website and clicking on the 'check in-store stock' link.

Canada Place,  
020 7719 0300



## PAUL SMITH

Inject some colour into your home courtesy of Paul Smith's homeware collection. The designer's signature rainbow stripes have been refashioned as rugs and cushions by The Rug Company, while its Anglepoise desk lamps and bone china teacups and teapots are by Thomas Goode.

Cabot Place, 020 7519 6819



## CURRYS PC WORLD

No modern home is complete without the latest technology. Visit Currys PC World to discover handy home tech such as the Google Nest Mini, a hands-free smart speaker, and the latest HDTV sets from LG, Panasonic and Sony. Order online to collect in-store the very same day.

Canada Place,  
0344 561 0000

## Home Sweet Home

OUR HOMES HAVE NEVER MEANT SO MUCH TO US – OR BEEN SO OVERUSED. NOW'S THE TIME TO RESTORE THEM TO THEIR FORMER GLORY

Transitioning into autumn offers the perfect time to shake off summer and create living spaces that feel warm and cosy. This year more than ever, our homes deserve some extra love, especially as they will have experienced more wear and tear than usual.

New rugs, bedding and soft furnishings are an easy way to update your interiors without a major redesign. Visit Oliver Bonas in Jubilee Place to discover the brand's latest furniture and home accessories, from sumptuous velvet armchairs and quirky wall art to embroidered cushions in sunny yellow hues and statement mirrors.

Kitsch homeware that doesn't break the bank can be found at Crossrail

Place, where Flying Tiger Copenhagen offers a veritable treasure trove of home accessories, gadgets and eclectic *objet d'art*.

Seek out John Lewis's extensive homeware offering on the top floors of Waitrose & Partners in Canada Place, where electronics, cushions, throws and kitchenware are available.

For those who prefer a minimalist look, The White Company in Jubilee Place has new season soft furnishings and accessories in the brand's signature white and grey colour palette. If you can't get to the shop, book a virtual consultation on the retailer's website to receive tailored advice from in-store experts.



## GET THE LOOK

A grey, white and black colour palette will keep your home feeling fresh throughout the seasons



Wild Berry & Bramble Candle, £90, Jo Malone, Cabot Place



Velvet Button Stool, £285, Oliver Bonas, Jubilee Place



Stone Jar, £3, Flying Tiger Copenhagen, Crossrail Place



Bamboo Pendant Light, £100, Oliver Bonas, Jubilee Place



Velvet Square Cushion, £50, Waitrose & Partners, Canada Place

## WHAT TO FIND

in Waitrose & Partners

## FOOD

ON THE MALL LEVEL, YOU'LL FIND EVERYTHING FOOD-RELATED, FROM DELI COUNTERS TO BAKERIES

## HOME

ON THE GROUND FLOOR, DISCOVER THE LATEST HOMEWARE, CHILDRENSWEAR AND TOYS

## FASHION

ON THE FIRST FLOOR, SHOP FOR NEW SEASON FASHION, BEAUTY PRODUCTS, SPORTSWEAR AND ELECTRONICS



# LIVING IN CANARY WHARF



Canary Wharf's new neighbourhood, Wood Wharf, is home to a vibrant community that enjoys a unique combination of waterside and city living. With beautiful apartments geared to both renting and home-ownership, the new neighbourhood offers unbeatable views, exceptional architecture and a range of exclusive amenities all within a stunning waterside location. Specialist concierge services are on hand to help residents' daily lives run smoothly, while more than 20 acres of parks, gardens and squares provide moments of tranquility within one of London's most vibrant areas.

**Find your next home in Canary Wharf, where brand new apartments are available to rent or buy**

## VERTUS

BRINGING LUXURY APARTMENTS AND A CLOSE-KNIT COMMUNITY TO THE ESTATE, VERTUS OFFERS THE CHANCE TO RENT A HOME IN THE HEART OF CANARY WHARF. AT 10 GEORGE STREET, 8 WATER STREET AND NEWFOUNDLAND, RESIDENTS CAN ENJOY FLEXIBLE TENANCIES AND A HOST OF PRIVATE FACILITIES

Walk along the picturesque boardwalks of Harbour Quay Gardens and you'll find the architectural marvel that is 10 George Street, which towers 37-storeys high. Inside, there are 327 apartments ranging from studios to three-bedrooms, many of which have balconies and views of the gardens and boardwalks below. Along with a 24-hour concierge and high-speed broadband, residents have access to an array of exclusive amenities, including a gym, bicycle store, bar, private dining room and lounge, which opens out onto a large, south-facing terrace.

[thisisvertus.com](https://thisisvertus.com)



## 10 GEORGE STREET



## NEWFOUNDLAND

Rooms with a spectacular view can be enjoyed at Newfoundland, launching in January 2021. Comprising 636 apartments spread across 58 storeys, Newfoundland makes the most of its stature and location with full-height wraparound windows in each home. Opt for an east-facing apartment to enjoy views across Canary Wharf, or turn west for a dramatic vista of the River Thames, the City and beyond. To top it off, residents will have exclusive access to private amenities including a gym, lounge, co-working space and children's play area.

[thisisvertus.com](https://thisisvertus.com)



## 8 WATER STREET

Dreaming of life by the water and green spaces, but not ready to give up city living? Launching this autumn, 8 Water Street will bring the best of both worlds together through a collection of 174 low-rise apartments. Relaxation and serenity rule supreme here thanks to a landscaped roof garden — the largest outdoor space in the Vertus portfolio — and private gardens that overlook the South Dock of Canary Wharf. Vertus's first pet-friendly address, 8 Water Street boasts a variety of social spaces — with four-legged friends welcome in each.

[thisisvertus.com](https://thisisvertus.com)

## CANARY WHARF RESIDENTIAL

OWN A HOME IN ONE OF LONDON'S MOST EXCITING NEW NEIGHBOURHOODS. ONE PARK DRIVE AND 10 PARK DRIVE ARE EXCEPTIONAL ARCHITECTURAL FEATS OFFERING THE BEST IN WATERSIDE LIVING AND EXCLUSIVE AMENITIES



## 10 PARK DRIVE

Architecture firm Stanton Williams designed 10 Park Drive to make the most of the gentle waters of the docklands and the beautifully-landscaped open spaces below — and that it does. Available to move in now, each apartment is fitted with floor-to-ceiling windows that create statement rooms, with the reflections of the surrounding

city shining in on the expertly-designed interiors. Alongside a private residents' club and rooftop terrace, homeowners have access to 40,000 sq ft of premium exercising space at the on-site Third Space health club, which is home to a spa and hydrotherapy pool.

[canarywharf.com/residential](https://canarywharf.com/residential)



## ONE PARK DRIVE

Designed by leading architecture firm Herzog & de Meuron, One Park Drive is the signature building of Wood Wharf. Expected to complete in 2021, the architectural marvel will be home to 468 apartments divided into three typologies, each with their own distinct characteristics. On the lower floors, the Loft apartments will have high-ceilings and wraparound terraces to make the

most of the green spaces outside; the upper floors will contain the Bay apartments, where double-height terraces will maximise the views across London; while the Cluster, the middle of the building, will harbour a mix of the two. A full suite of residential amenities will be spread across two floors, including a library, cinema and health club.

[canarywharf.com/residential](https://canarywharf.com/residential)



# PARKS AND OPEN SPACES

Now more than ever, we've come to realise the healing powers of the great outdoors. Fresh air, world-renowned art and tropical landscapes await at Canary Wharf



## JUBILEE PARK

Populated by mature trees, Jubilee Park stretches between the two entrances to the Canary Wharf Underground station and is distinctive both for its serpentine raised water channel and its artworks. The *Fortuna* sculpture by Helaine Blumenfeld OBE was commissioned for Canary Wharf and is inspired by the Roman goddess of luck. Blumenfeld is as skilled in working with marble and wood as she is with bronze and terracotta; the diversity of her body of work is reflected in her sculptures of natural forms. For art lovers, this must be on your list of places to visit in London.

*“For art lovers, this must be on your list of places to visit”*



## CROSSRAIL PLACE

In Canary Wharf, you can find one of London's largest roof gardens. The Crossrail Place Roof Garden, with its distinctive and unique latticed roof structure, is designed to evoke a ship laden with rare and exotic specimens from across the globe, which are planted throughout – from New Zealand tree ferns to Japanese maple. Canary Wharf's gardeners plant and cultivate 70,000 plants every year, which change with the seasons; admire these as you wander through the hidden pathways.



## BANK STREET PARK

When you hear 'loop-de-loop' and the 'death drop' you might be inclined to think of an adrenaline-inducing theme park – in fact, these are the classic tee-offs at Canary Wharf's minigolf course on Bank Street Park. It's free to play, so come and see the event stewards who will be able to provide you with clubs and balls, and if you're lucky, some hints and tips on how to get a hole-in-one. For opening times and more information visit [canarywharf.com](http://canarywharf.com).



## CANADA SQUARE PARK

Canada Square Park is the jewel in the crown of Canary Wharf's green spaces. Located in the heart of the estate, it plays host to a vibrant programme of cultural events throughout the year, from film screenings and dance performances, to live music and mini festivals. It's also home to alfresco dining whatever the weather; soak up the atmosphere while enjoying a delicious dinner at The Ivy in the Park's terrace or a drink at one of the host of bars that line the square – including The Parlour and The Grandstand Bar.



## WOOD WHARF

Among the 23-acres of Wood Wharf, more than a third of will be dedicated to squares, parks and gardens. And most of it leads right up to the waterfront – 350 metres of it in fact. The area provides the perfect opportunity to focus body and mind with outdoor health and wellbeing exercises. Unwind and recharge on riverside walks and at the outdoor gym. In Wood Wharf, you'll also find Harbour Quay

## SUSTAINABILITY AT CANARY WHARF



### A FORCE FOR GOOD

For the past 30 years, we've explored ways of making Canary Wharf as sustainable as possible. Our buildings and open spaces have been designed with conservation and connectivity in mind. This approach has helped us to minimise today's impact and brace ourselves for future challenges. We advocate biodiversity, educate people on the thriving wildlife in the area, try to eliminate waste and promote energy efficiency.

Since 2009, we have sent zero waste to landfill from specific areas of our Estate; since 2012, 100 per cent of our electricity has been purchased from renewable sources; and since 2017, we have recycled more than 5.3 million coffee cups.

We strengthen communities, create culture and foster initiatives intended to help both society and the wider environment.

Gardens. A day by the seaside in a far off destination might be a distant memory for some of us, but you can relive the fantasy a little closer to home at this waterside spot. The boardwalks are the perfect place to take a stroll while enjoying views of the surrounding docklands; wind your way along the path, or take a breather on one of the many waterside benches.

## OUR SPACES

*in numbers*

20+

ACRES OF LANDSCAPED  
PARKS, GARDENS & SQUARES

1,000

TREES

4,000

SHRUBS

70,000

SEASONAL PLANTS  
PLANTED ANNUALLY



# ART ON THE ESTATE



**CAMILLE WALALA**  
*Captivated by Colour, 2020*

As part of the inaugural London Mural Festival, which took place across the capital in September, graphic design artist Camille Walala transformed Adams Plaza Bridge into a work of art. Utilising her love of bright colours, graphic lines and geometric shapes, the French artist — who has lived in east London for more than 20 years — has wrapped the tunnel in striking multi-coloured stripes, playing with perspective and shape to create an optical illusion that changes as you walk across the bridge.

Where to find it: Adams Plaza Bridge

**JULIAN WILD**  
*ScribbleForm, 2020*

Located on Montgomery Square, *ScribbleForm* acts as a gateway to Canary Wharf's newest district, Wood Wharf, its cherry-red hue standing in stark contrast to the buildings around it. Stretching 10 metres in length and 4 metres in height, the large-scale steel work is reminiscent of a flamboyant doodle, mimicking the arcs, twists and unbridled joy of a child's scribble.

Where to find it: Montgomery Square



Get your cultural fix at Canary Wharf, which boasts one of the UK's largest collections of public art — much of which can be found outdoors

**SEAN HENRY**  
*Standing Figure (Man), 2019, and Standing Figure (Woman), 2020*

Standing guard on Park Drive, Sean Henry's *Standing Figure (Man)* and *Standing Figure (Woman)* sculptures are hyper-real figurative pieces cast in bronze and painted with lifelike features. Eagle-eyed visitors to Canary Wharf may recognise *Standing Figure (Man)* from its former home in Reuters Plaza, where it was located during the estate's *Body + Soul* exhibition last year. With the pair positioned in a stand off, their interaction looks tense — but it is up to the viewer to decide the conversation between them.

Where to find it: Park Drive



**HENRY MOORE**  
*Draped Seated Woman, 1957-58*

Henry Moore's *Draped Seated Woman* has long had a place in the hearts of east Londoners. 'Old Flo', as the artwork is affectionately known by locals, was originally located within Tower Hamlets' Stifford Estate, having been acquired by the London County Council in 1962. When the estate was demolished in the 1990s, the sculpture was temporarily moved to Yorkshire Sculpture Park until 2017, when Canary Wharf Group helped fund the reinstatement of this important piece of art to the area.

Where to find it: Cabot Square



**LYNN CHADWICK**  
*Couple on a Seat, 1984*

Having shocked audiences at the 1952 Venice Biennale with sculptures made of bronze instead of wood or stone, the industry's preferred materials, Lynn Chadwick shot to sculpting fame with his figurative and expressionistic

works. *Couple on a Seat* is one of his later pieces, part of a series of figures that he developed throughout the duration of his career — beginning with dancing forms and concluding with couples perched together, peacefully, on an elevated bench.

Where to find it: Cabot Square

LAST CHANCE TO SEE

## LOOKING UP: HELAINÉ BLUMENFELD



A long-term advocate for public art, sculptor Helaine Blumenfeld presents her largest solo exhibition to date: *Looking Up at Canary Wharf*. The show focuses on Blumenfeld's signature materials — Carrara marble, terracotta, cedar wood and bronze — and spans five decades, with pieces dating from the 1970s to the present day. Among them are *Fortuna* and *Metamorphosis*, two pieces in Canary Wharf's permanent collection, as well as seven new sculptures that Blumenfeld has created especially for the exhibition.

With no formal training, Blumenfeld has become one of Britain's foremost sculptors, creating more than 90 largescale pieces for public and private commissions over the course of her 50-year career. Each piece aims to capture the emotion, movement and spirituality of humanity, and the results are striking, undulating forms that twist in unexpected and beautiful ways.

"I wanted to stop people looking down at their phones and their feeds," the sculptor said, "and not only see the sculptures that are around them, but see the world that's there, the nature, the possibility and the spirituality. That's why the exhibition is called *Looking Up*."

*Lobby, One Canada Square, until 6 November; Outdoor works will remain until May 2021*







# VERTUS

RESIDENTIAL  
LEASING

10 GEORGE STREET | CANARY WHARF

RENT IN LONDON'S NO.1  
RESIDENTIAL DEVELOPMENT

VIEW. RESERVE. MOVE IN.

[THISISVERTUS.COM](https://thisisvertus.com)

AS VOTED BY  
 homeviews

COMPUTER GENERATED IMAGE. INDICATIVE ONLY. PRICE CORRECT AT TIME OF PRINTING.